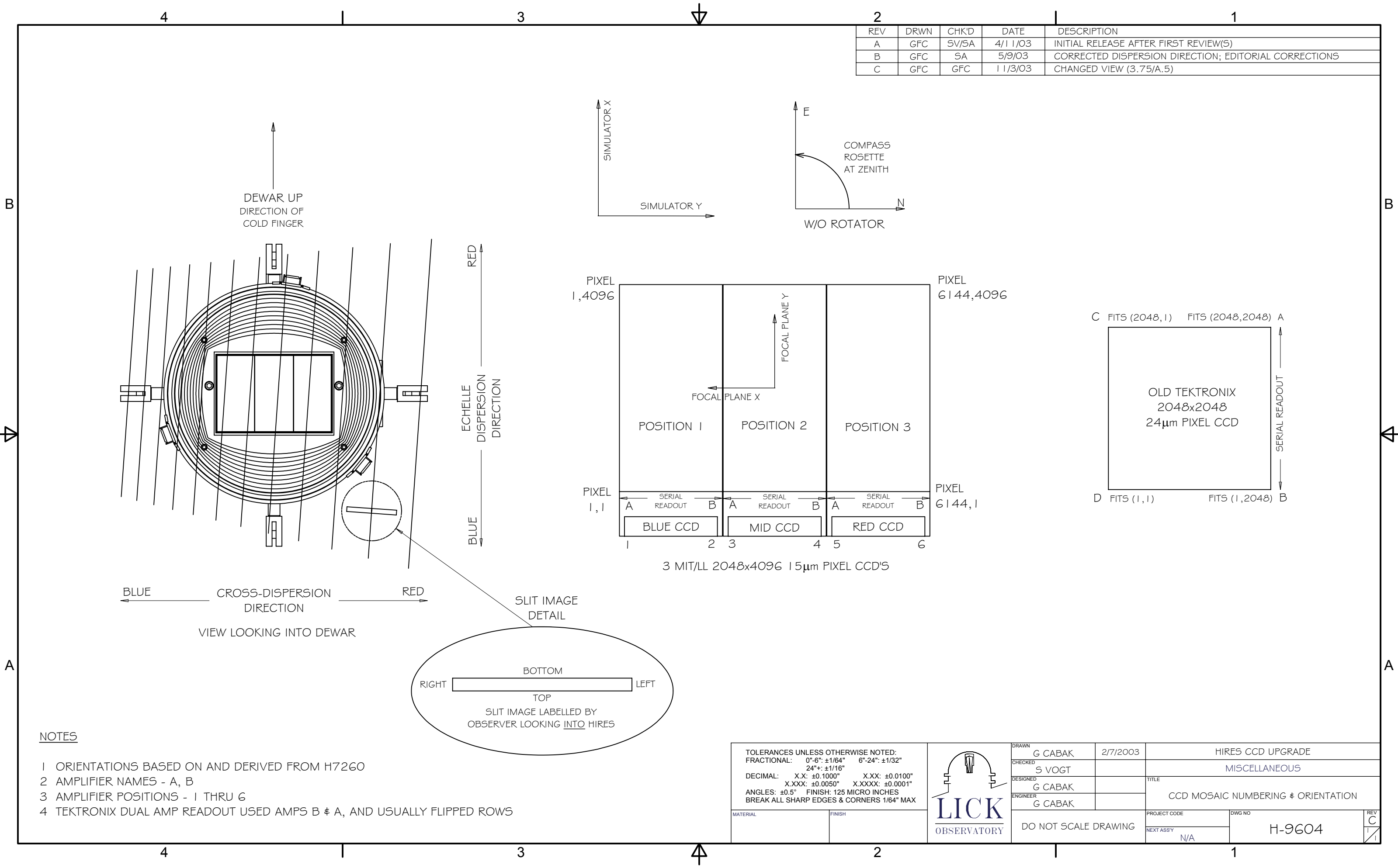


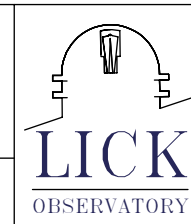
REV	DRWN	CHK'D	DATE	DESCRIPTION
A	GFC	SV/SA	4/11/03	INITIAL RELEASE AFTER FIRST REVIEW(S)
B	GFC	SA	5/9/03	CORRECTED DISPERSION DIRECTION; EDITORIAL CORRECTIONS
C	GFC	GFC	11/3/03	CHANGED VIEW (3.75/A.5)



NOTES

- 1 ORIENTATIONS BASED ON AND DERIVED FROM H7260
- 2 AMPLIFIER NAMES - A, B
- 3 AMPLIFIER POSITIONS - 1 THRU 6
- 4 TEKTRONIX DUAL AMP READOUT USED AMPS B & A, AND USUALLY FLIPPED ROWS

TOLERANCES UNLESS OTHERWISE NOTED:	
FRACTIONAL:	0"-6": ±1/64" 6"-24": ±1/32" 24"+: ±1/16"
DECIMAL:	X.X: ±0.1000" X.XX: ±0.0100" X.XXX: ±0.0050" X.XXXX: ±0.0001"
ANGLES: ±0.5° FINISH: 125 MICRO INCHES BREAK ALL SHARP EDGES & CORNERS 1/64" MAX	
MATERIAL	FINISH



DRAWN	G CABAK	2/7/2003	HIRES CCD UPGRADE
CHECKED	S VOGT		MISCELLANEOUS
DESIGNED	G CABAK		TITLE
ENGINEER	G CABAK		CCD MOSAIC NUMBERING & ORIENTATION
DO NOT SCALE DRAWING		PROJECT CODE	DWG NO
		N/A	H-9604
			REV C 1/1