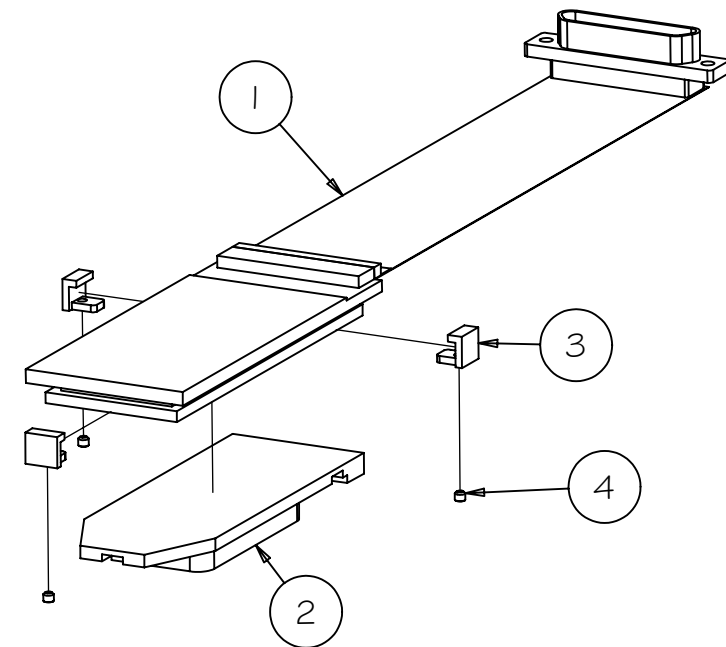
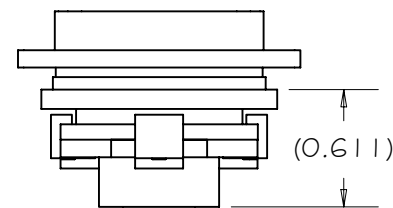
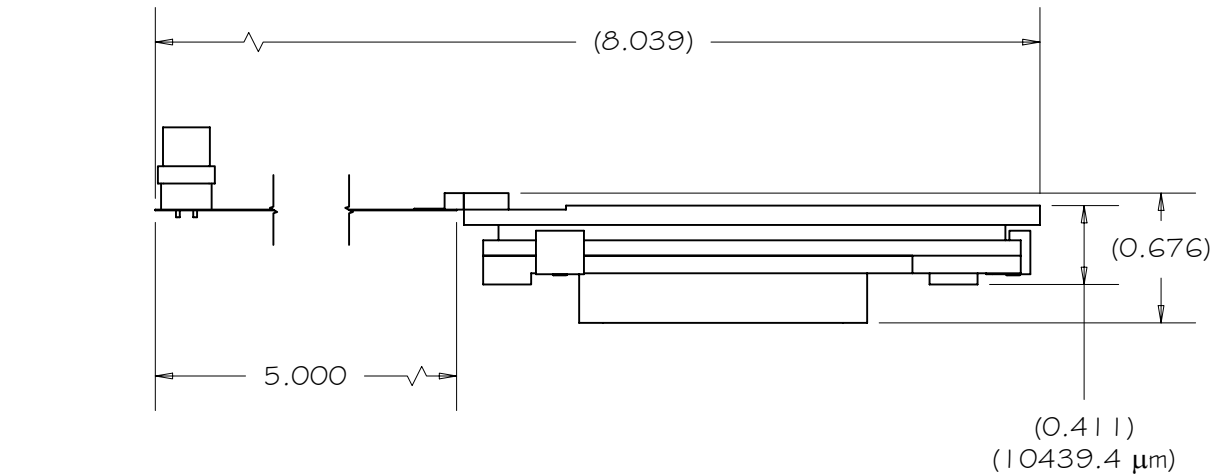
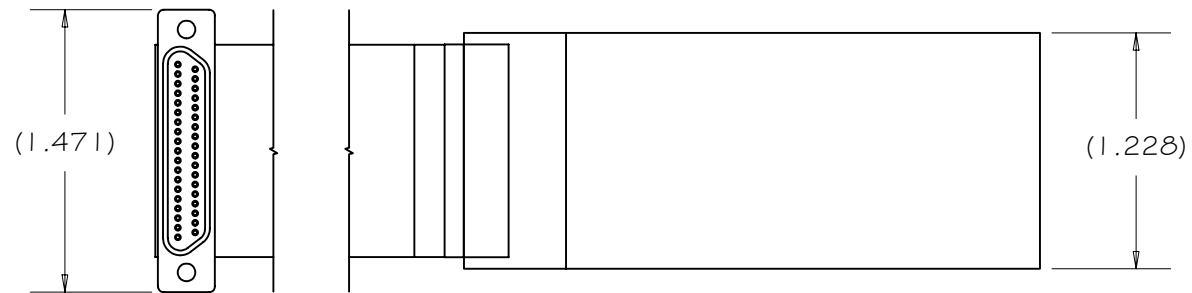


REV	DRWN	CHK'D	DATE	DESCRIPTION
A	GFC	GFC	6/3/03	INITIAL RELEASE
B	GFC	GFC	9/23/03	ADDED CCD DESIGNATIONS



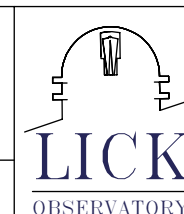
DEVICE-ASSEMBLIES TABLE

H-9440-X	H-9441-X	DEVICE DESCRIPTION
H-9440-1	H-9441-1	BLUE CCD 17-7-1
H-9440-2	H-9441-2	MID CCD 17-7-6
H-9440-3	H-9441-3	RED CCD 2-2-1

Parts List			
ITE	QT	PART NUM	DESCRIPTION
1	1	H-9441-X	SEE TABLE
2	1	H-9404	CCD BASE
3	3	H-9403	CLIP
4	3	HARDWARE	SET SCREW, 2-56 UNC X .0625

TOLERANCES UNLESS OTHERWISE NOTED:  
 FRACTIONAL: 0"-6": ±1/64" 6"-24": ±1/32"  
 24"+: ±1/16"  
 DECIMAL: X.X: ±0.1000" X.XX: ±0.0100"  
 X.XXX: ±0.0050" X.XXXX: ±0.0001"  
 ANGLES: ±0.5° FINISH: 125 MICRO INCHES  
 BREAK ALL SHARP EDGES & CORNERS 1/64" MAX

MATERIAL	FINISH
PARTS LIST	



DRAWN	G CABAK	10/15/2002
CHECKED		
DESIGNED	G CABAK	
ENGINEER	G CABAK	

HIRES CCD UPGRADE	
CCD # BACKPLANE	
TITLE	
CCD TOP ASSEMBLY	

DO NOT SCALE DRAWING

PROJECT CODE	DWG NO	REV
KHCCDE	H-9440	B
NEXT ASSY	H-9111	1