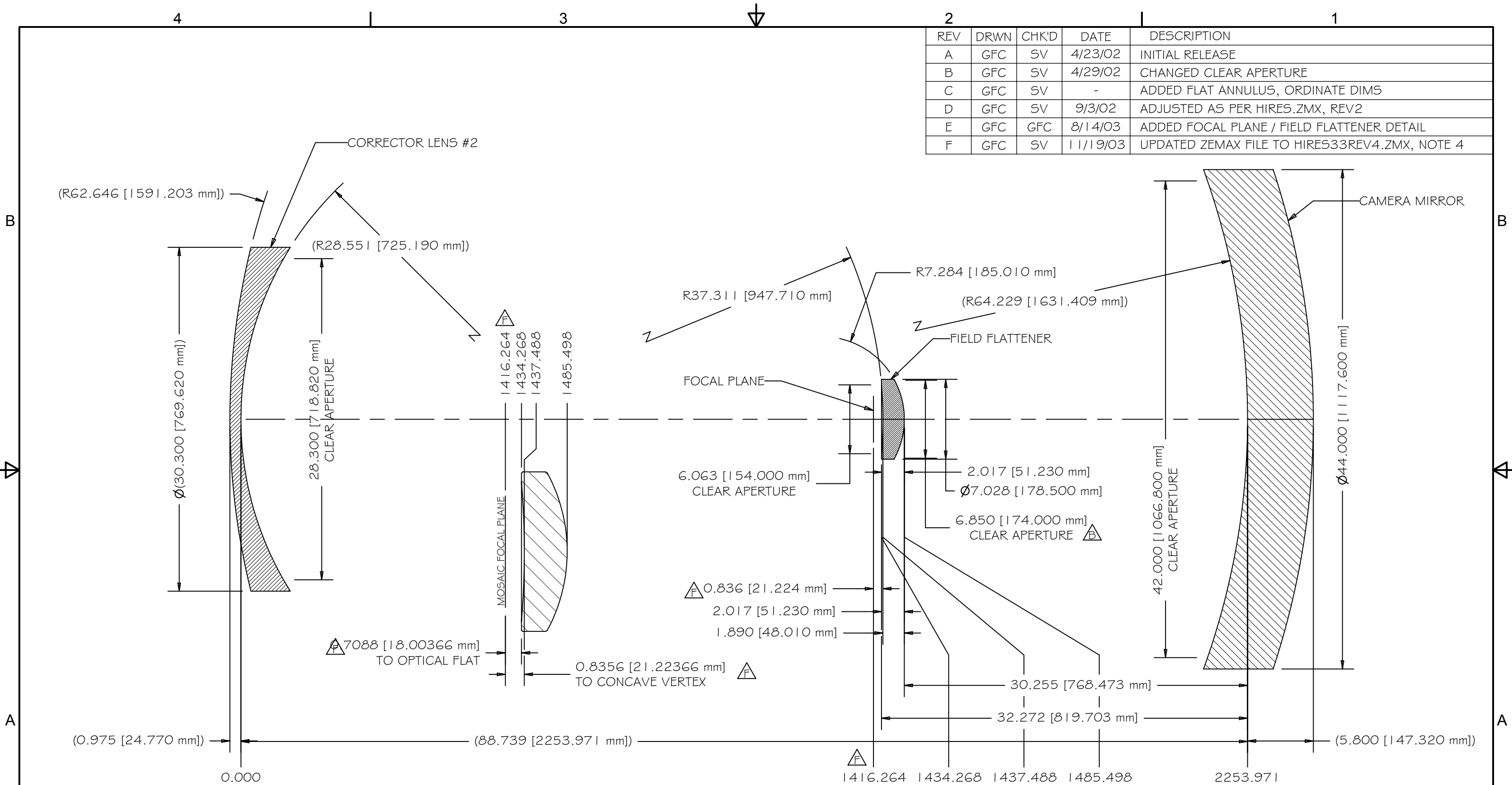


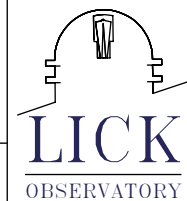
REV	DRWN	CHK'D	DATE	DESCRIPTION
A	GFC	SV	4/23/02	INITIAL RELEASE
B	GFC	SV	4/29/02	CHANGED CLEAR APERTURE
C	GFC	SV	-	ADDED FLAT ANNULUS, ORDINATE DIMS
D	GFC	SV	9/3/02	ADJUSTED AS PER HIRES.ZMX, REV2
E	GFC	GFC	8/14/03	ADDED FOCAL PLANE / FIELD FLATTENER DETAIL
F	GFC	SV	11/19/03	UPDATED ZEMAX FILE TO HIRES33REV4.ZMX, NOTE 4



NOTES

- 1 REFERENCE DIMENSIONS, (XXX), FROM HO148
- 2 FOCAL PLANE POSITION REFERENCE, HIRES33REV4.ZMX
- 3 DIMENSIONS OF FIELD FLATTENER REFLECT AS-BUILT GEOMETRY
- 4 POSITION OF FOCAL PLANE REFLECTS AS-BUILT GEOMETRY & ASSEMBLY

TOLERANCES UNLESS OTHERWISE NOTED:	
FRACTIONAL:	0"-6": ±1/64" 6"-24": ±1/32"
	24"+: ±1/16"
DECIMAL:	X.X: ±0.1000" X.XX: ±0.0100"
	X.XXX: ±0.0050" X.XXXX: ±0.0001"
ANGLES: ±0.5° FINISH: 125 MICRO INCHES	
BREAK ALL SHARP EDGES & CORNERS 1/64" MAX	
MATERIAL	FINISH
N/A	N/A



DRAWN	G. CABAK	4/19/2002
CHECKED	S VOGT	4/23/2002
DESIGNED	S VOGT	4/23/02
ENGINEER	S VOGT	4/23/2002

PROJECT CODE		KHCCDF	
DWG NO		H-9182	
TITLE		OPTICAL LAYOUT, PARTIAL	
DO NOT SCALE DRAWING			

REV	F
	1