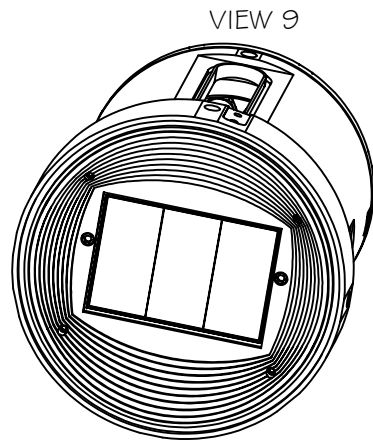
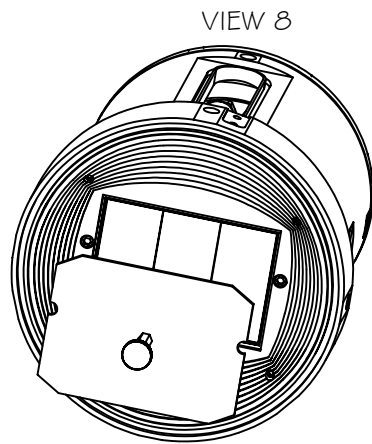
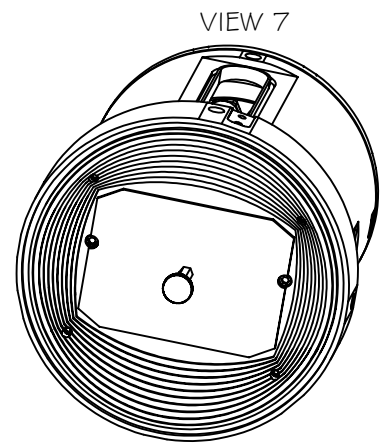
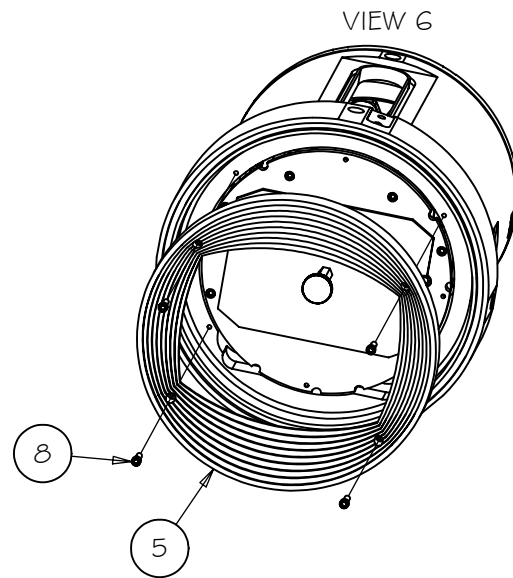
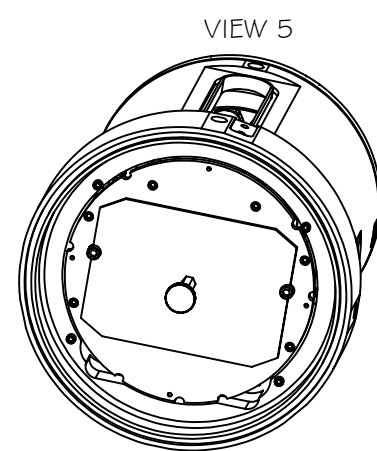
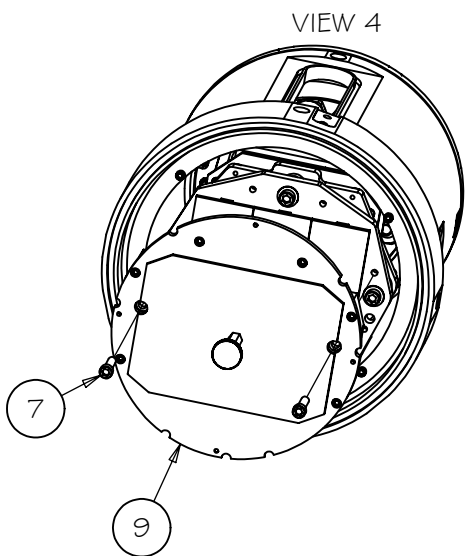
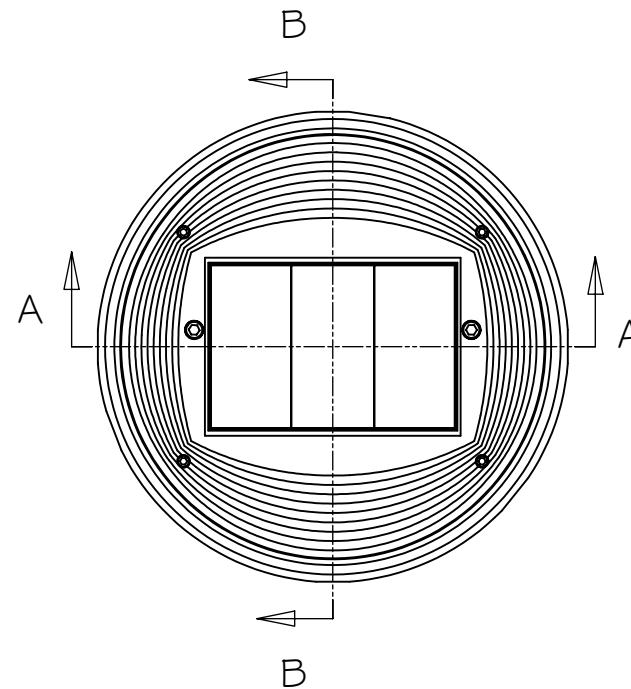
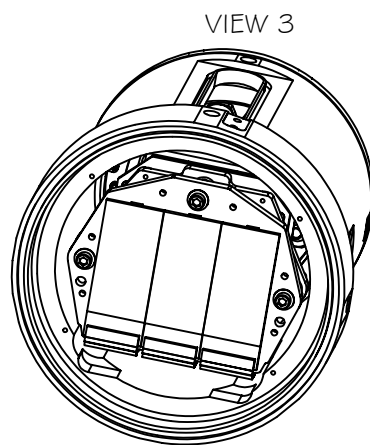
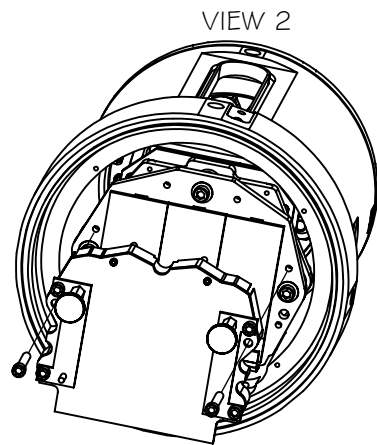
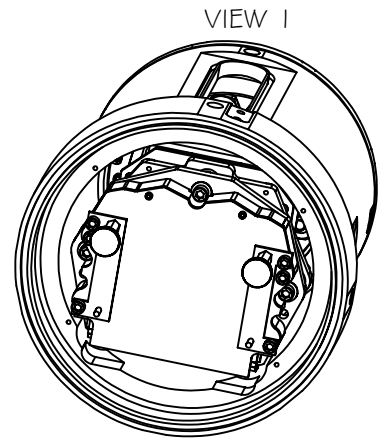


REV	DRWN	CHK'D	DATE	DESCRIPTION
A	GFC	TP	10/6/03	INITIAL RELEASE
B	GFC	TP	10/8/03	ADDED OPTICAL MASK ATTACHMENT ASSY
C	GFC	JL/TP	1/16/04	PARTS & PROCEDURE CHANGE

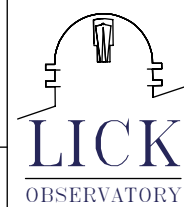


**ASSEMBLY NOTES**

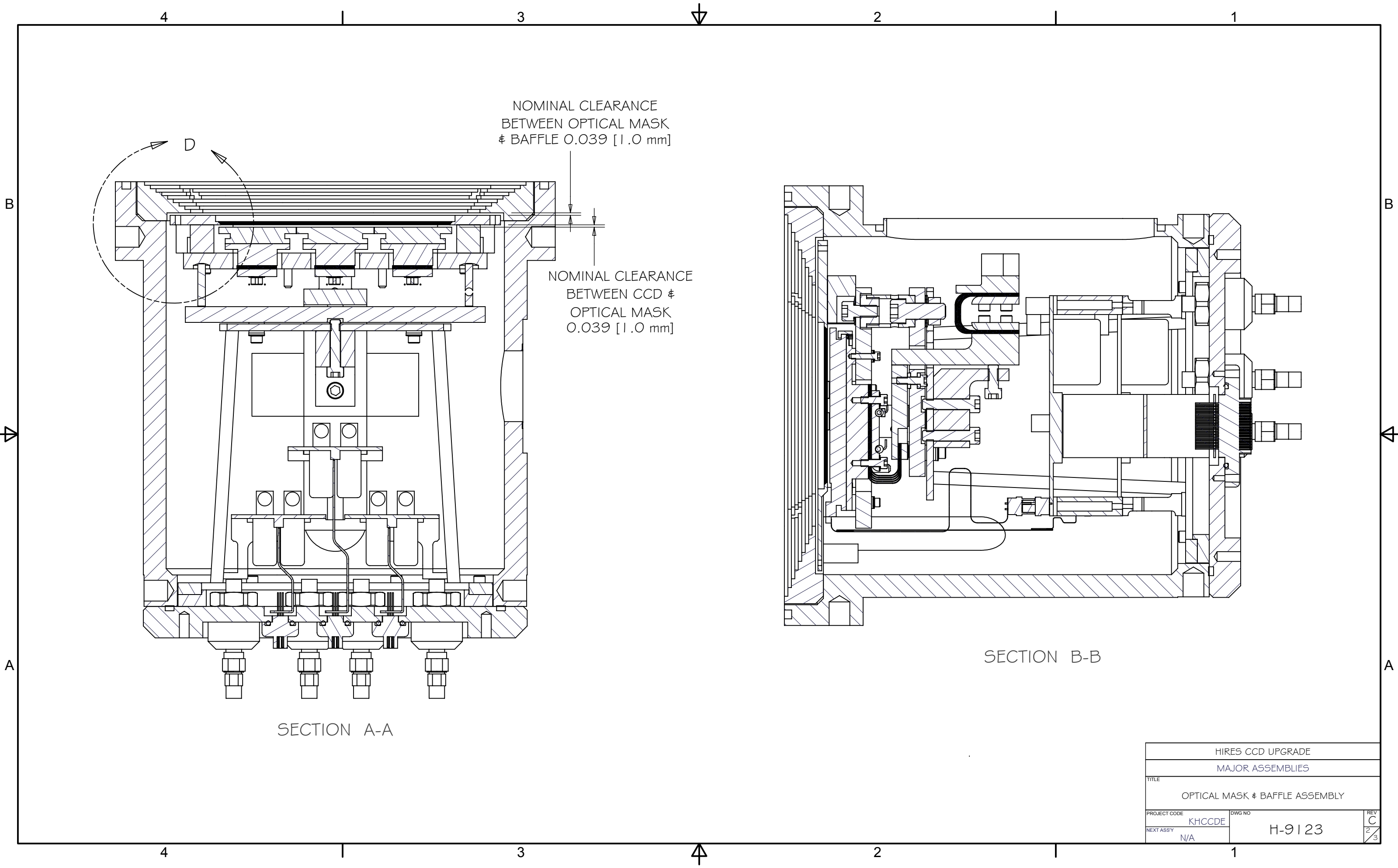
- 1 DEWAR CONTENTS INSERTED WITH SPASH GUARD ATTACHED (VIEW 1)
- 2 SPLASH GUARD IS REMOVED (VIEWS 2&3)
- 3 OPTICAL MASK ASSEMBLY IS ATTACHED (VIEWS 4&5)
- 4 OPTICAL BAFFLE IS ATTACHED (VIEWS 6&7)
- 5 OPTICAL MASK SHIELD IS REMOVED (VIEWS 8&9)

PARTS LIST			
ITEM	QTY	P/N	DESCRIPTION
2	1	H-9413	SPLASH GUARD ASSEMBLY
5	1	H-9183	OPTICAL BAFFLE
6	2	H/W	SCREW, SHCS, 8-32, 1" LNG
7	2	H/W	SCREW, SHCW, 8-32, .75" LNG
8	4	H/W	SCREW, SHCS, 4-40, .374" LNG
9	1	H-9448	OPTICAL MASK ATTACHMENT ASSEMBLY

TOLERANCES UNLESS OTHERWISE NOTED:  
 FRACTIONAL: 0"-6": ±1/64" 6"-24": ±1/32"  
 24"+: ±1/16"  
 DECIMAL: X.X: ±0.1000" X.XX: ±0.0100"  
 X.XXX: ±0.0050" X.XXXX: ±0.0001"  
 ANGLES: ±0.5° FINISH: 125 MICRO INCHES  
 BREAK ALL SHARP EDGES & CORNERS 1/64" MAX



DRAWN	G CABAK	10/3/2003	HIRE5 CCD UPGRADE
CHECKED	T PFISTER		MAJOR ASSEMBLIES
DESIGNED	G CABAK		TITLE
ENGINEER	G CABAK		OPTICAL MASK & BAFFLE ASSEMBLY
MATERIAL		FINISH	
DO NOT SCALE DRAWING		PROJECT CODE	KHCCDE
		DWG NO	H-9123
		REVISION	C
		REV	1/3



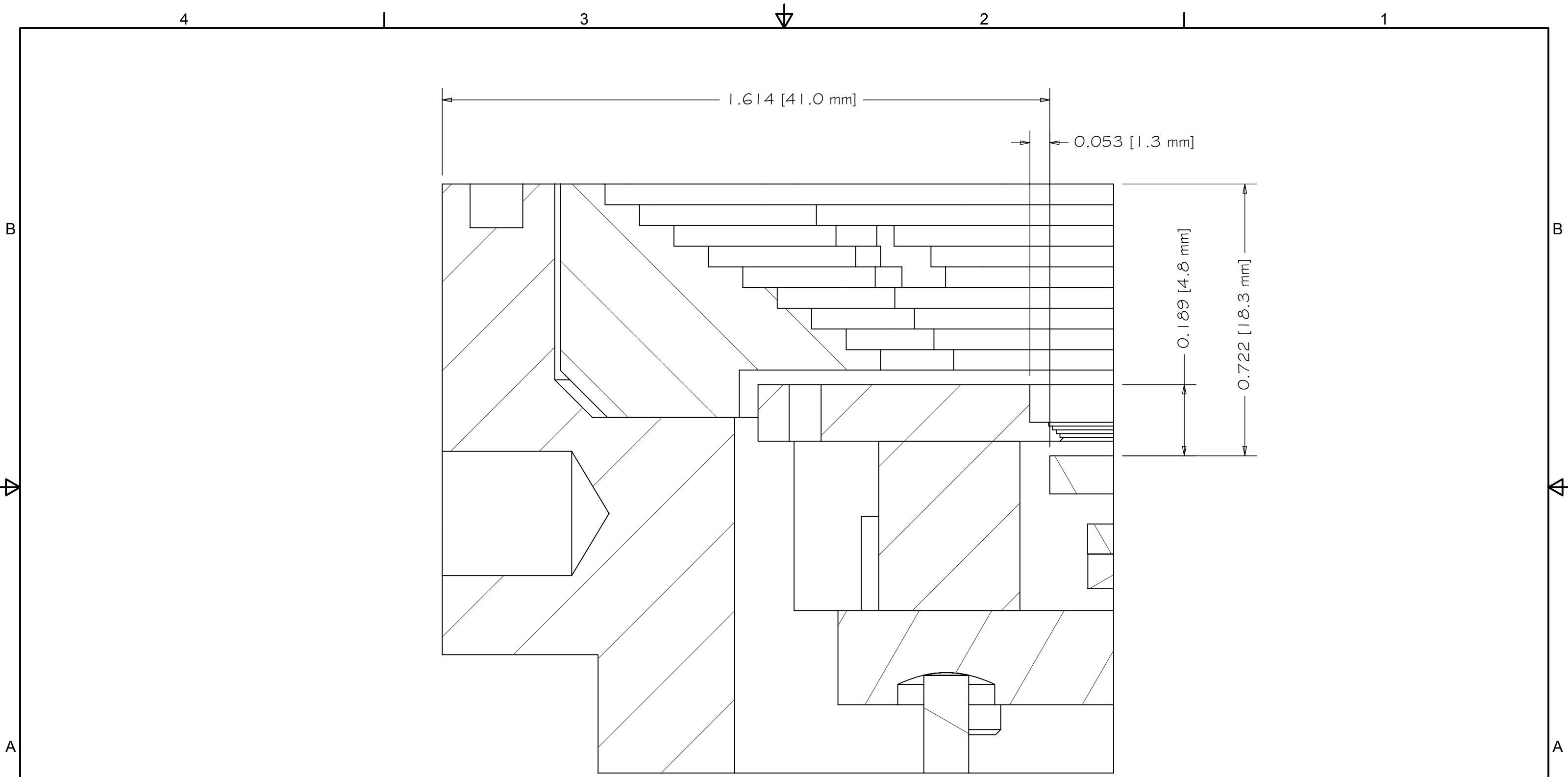
NOMINAL CLEARANCE  
 BETWEEN OPTICAL MASK  
 & BAFFLE 0.039 [1.0 mm]

NOMINAL CLEARANCE  
 BETWEEN CCD &  
 OPTICAL MASK  
 0.039 [1.0 mm]

SECTION A-A

SECTION B-B

HIRES CCD UPGRADE		
MAJOR ASSEMBLIES		
TITLE OPTICAL MASK & BAFFLE ASSEMBLY		
PROJECT CODE KHCCDE	DWG NO H-9123	REV C
NEXT ASSY N/A		2/3



HIRES CCD UPGRADE		
MAJOR ASSEMBLIES		
TITLE		
OPTICAL MASK & BAFFLE ASSEMBLY		
PROJECT CODE	DWG NO	REV
KHCCDE	H-9123	C
NEXT ASSY		3/3
N/A		