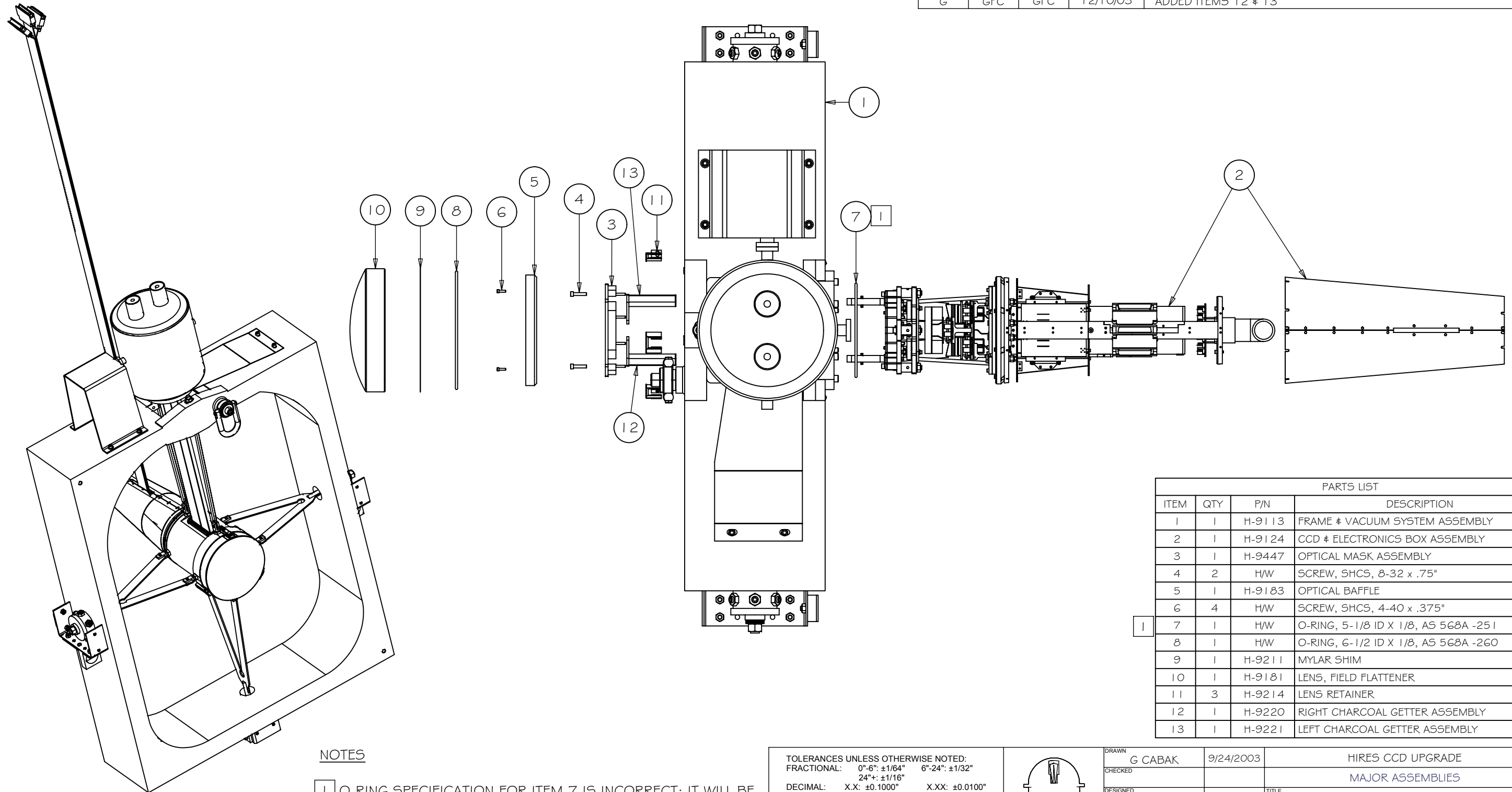


REV	DRWN	CHK'D	DATE	DESCRIPTION
A	GFC	GFC	9/23/03	INITIAL RELEASE
B	GFC	GFC	9/26/03	CORRECTED SHEET 2 DIMENSIONS
C	GFC	GFC	10/9/03	EXPANDED ASSEMBLY COMPONENTS
D	GFC	GFC	10/20/03	ADDED SHEET 3
E	GFC	TP	11/5/03	ADDED NOTE
F	GFC	GFC	11/20/03	ADDED NOTE 2
G	GFC	GFC	12/10/03	ADDED ITEMS 12 & 13



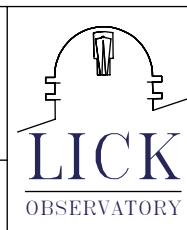
PARTS LIST			
ITEM	QTY	P/N	DESCRIPTION
1	1	H-9113	FRAME & VACUUM SYSTEM ASSEMBLY
2	1	H-9124	CCD & ELECTRONICS BOX ASSEMBLY
3	1	H-9447	OPTICAL MASK ASSEMBLY
4	2	H/W	SCREW, SHCS, 8-32 x .75"
5	1	H-9183	OPTICAL BAFFLE
6	4	H/W	SCREW, SHCS, 4-40 x .375"
7	1	H/W	O-RING, 5-1/8 ID X 1/8, AS 568A -251
8	1	H/W	O-RING, 6-1/2 ID X 1/8, AS 568A -260
9	1	H-9211	MYLAR SHIM
10	1	H-9181	LENS, FIELD FLATTENER
11	3	H-9214	LENS RETAINER
12	1	H-9220	RIGHT CHARCOAL GETTER ASSEMBLY
13	1	H-9221	LEFT CHARCOAL GETTER ASSEMBLY

**NOTES**

- 1 O-RING SPECIFICATION FOR ITEM 7 IS INCORRECT; IT WILL BE AMENDED WHEN IT CAN BE PROPERLY IDENTIFIED AT A TIME WHEN THE DEWAR CAN BE DIS-ASSEMBLED
- 2 SEE H-9609 FOR AS-BUILT DIMENSIONS

TOLERANCES UNLESS OTHERWISE NOTED:  
 FRACTIONAL: 0"-6": ±1/64" 6"-24": ±1/32"  
 24"+: ±1/16"  
 DECIMAL: X.X: ±0.1000" X.XX: ±0.0100"  
 X.XXX: ±0.0050" X.XXXX: ±0.0001"  
 ANGLES: ±0.5° FINISH: 125 MICRO INCHES  
 BREAK ALL SHARP EDGES & CORNERS 1/64" MAX

MATERIAL	FINISH
PARTS LIST	

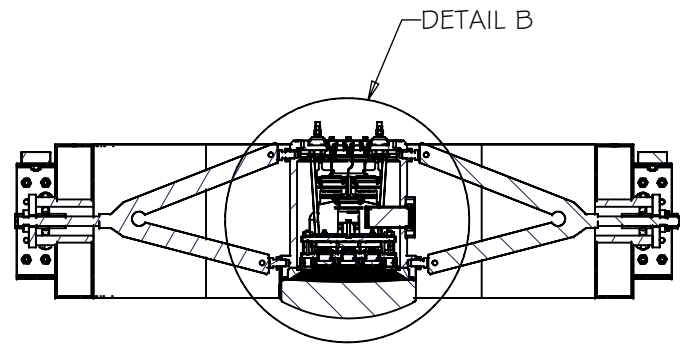


DRAWN	G CABAK	9/24/2003
CHECKED		
DESIGNED	G CABAK	
ENGINEER	G CABAK	

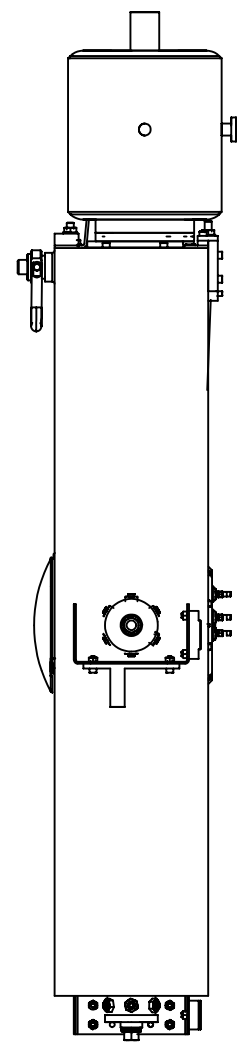
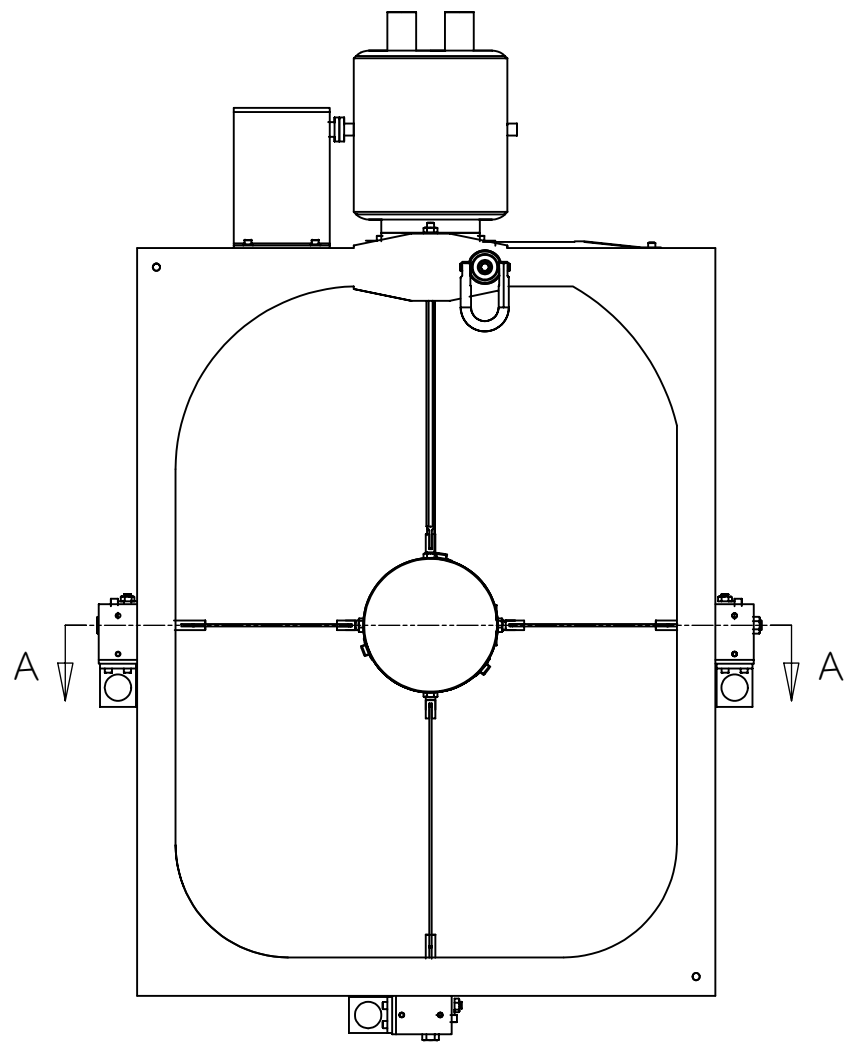
PROJECT CODE		KHCCDE		DWG NO		H-9122	
NEXT ASSY		H-9125		REV		G 1/3	

DO NOT SCALE DRAWING

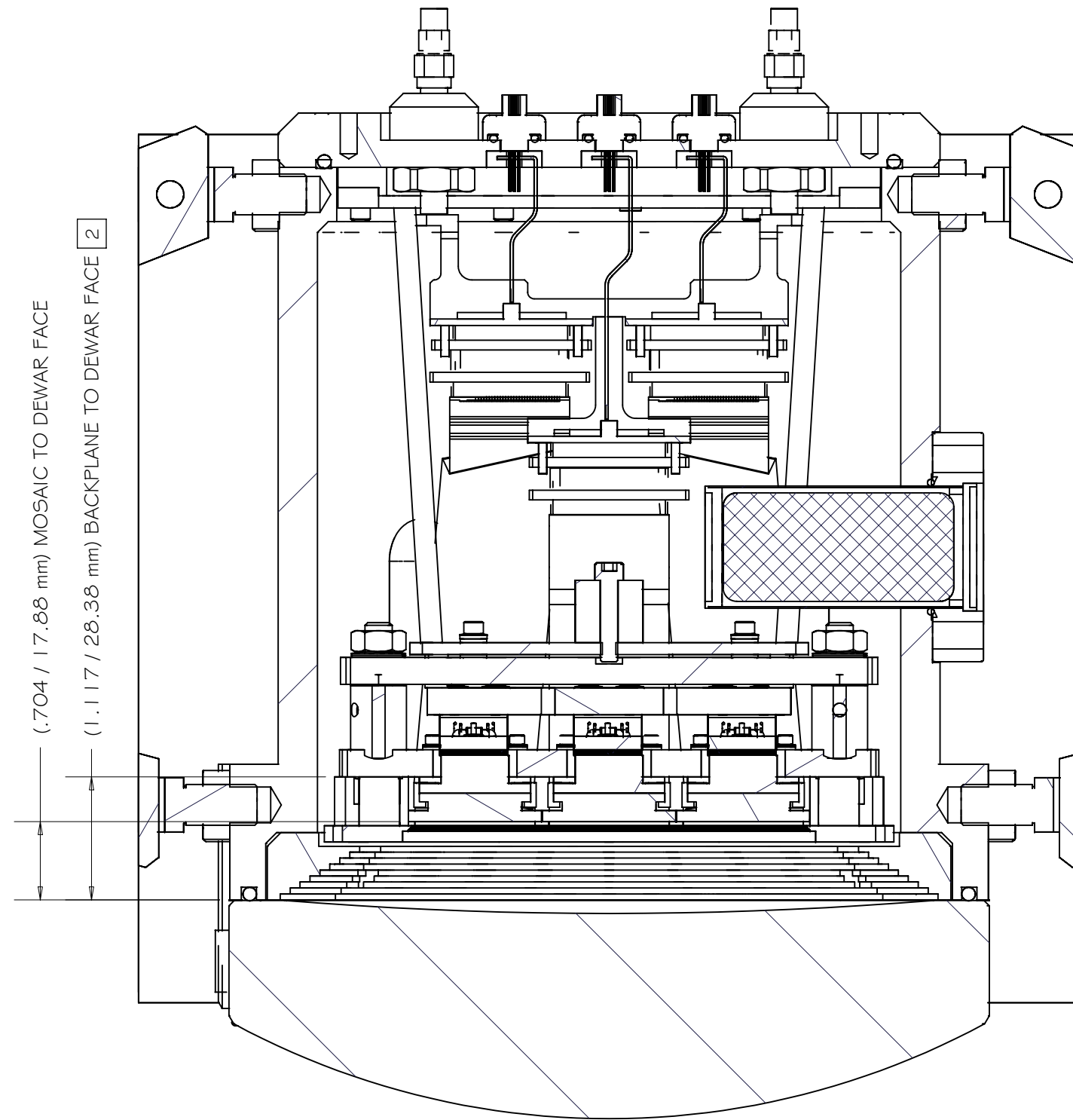
HIRE CCD UPGRADE  
 MAJOR ASSEMBLIES  
 CCD & FRAME ASSEMBLY



SECTION A-A

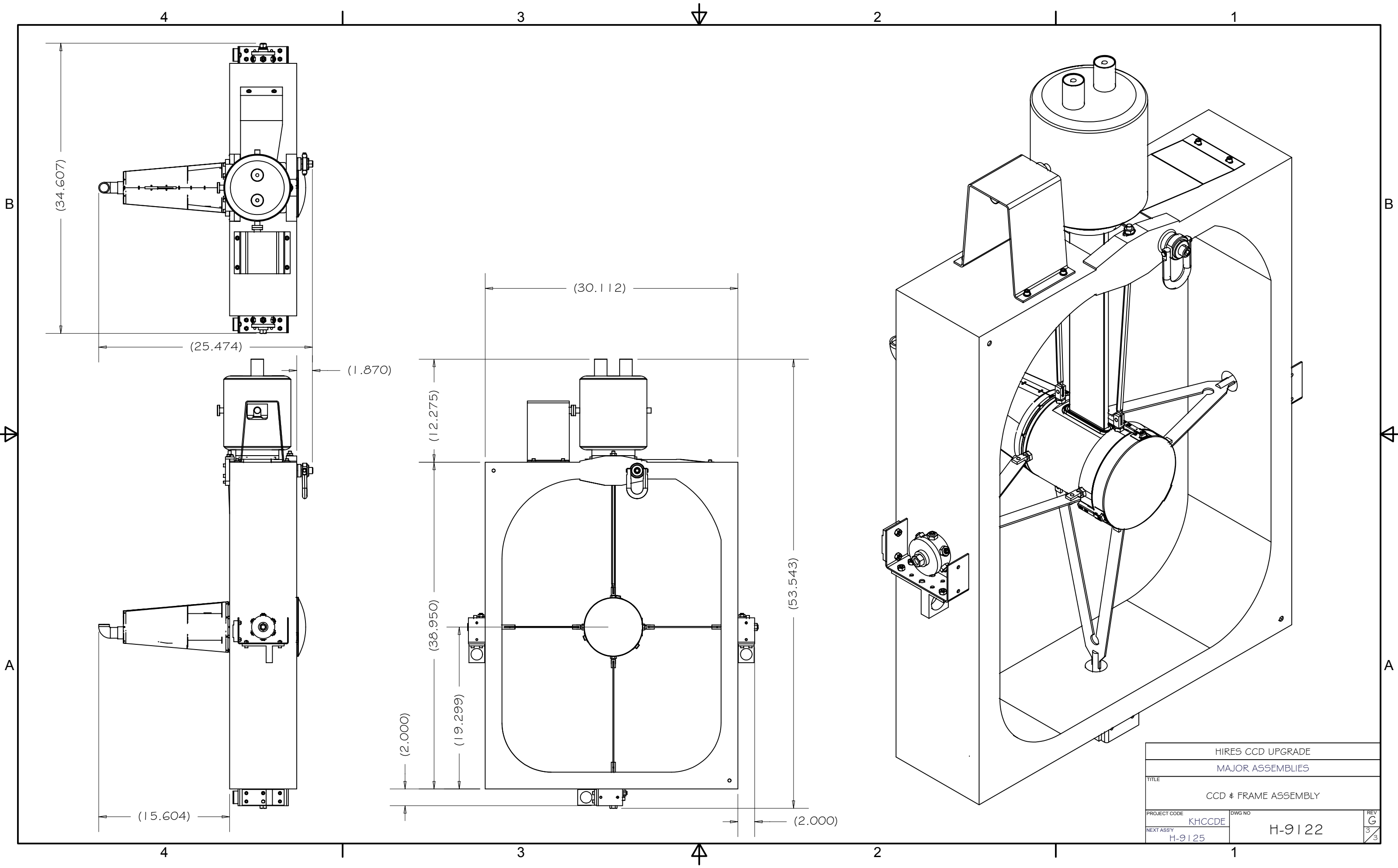


(.704 / 17.88 mm) MOSAIC TO DEWAR FACE  
 (1.117 / 28.38 mm) BACKPLANE TO DEWAR FACE



DETAIL B

HIRES CCD UPGRADE		
MAJOR ASSEMBLIES		
TITLE CCD # FRAME ASSEMBLY		
PROJECT CODE KHCCDE	DWG NO H-9125	REV G
NEXT ASSY H-9125		2 3



HIRES CCD UPGRADE	
MAJOR ASSEMBLIES	
TITLE CCD # FRAME ASSEMBLY	
PROJECT CODE KHCCDE	DWG NO H-9125
NEXT ASSY H-9125	REV G 3/3