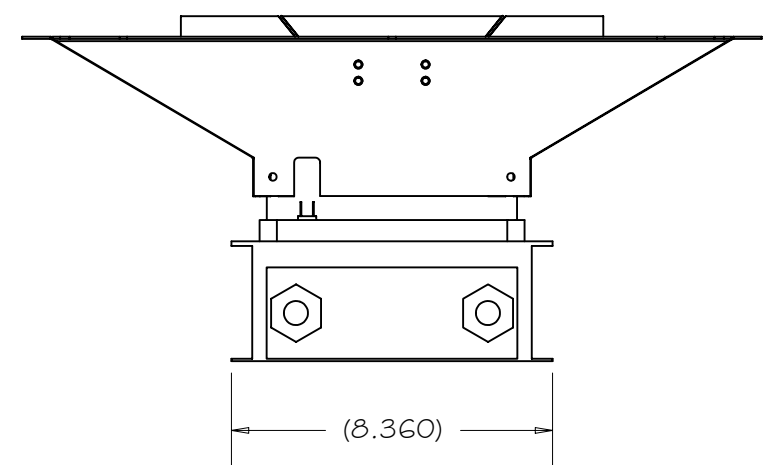
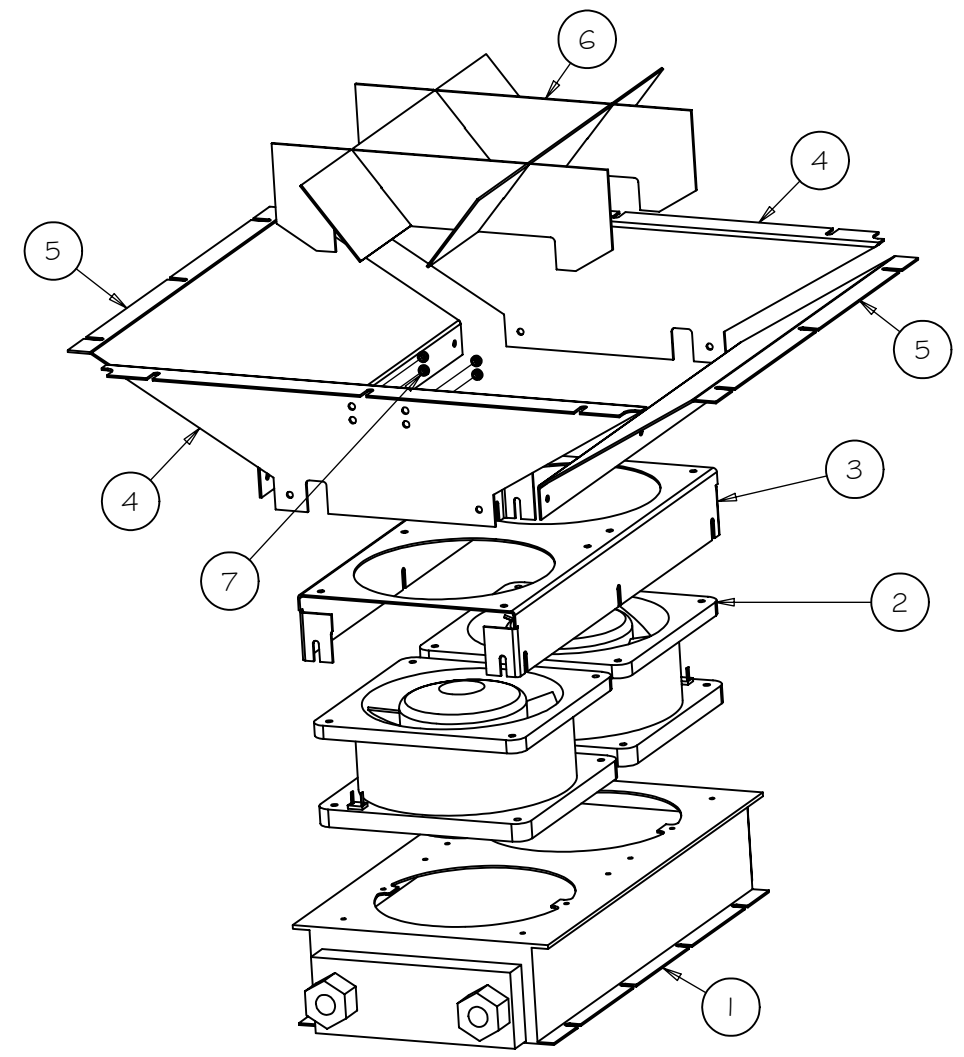
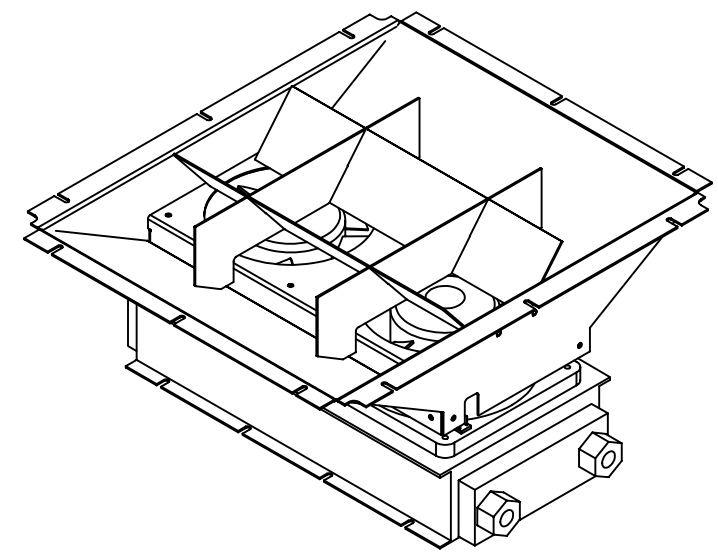
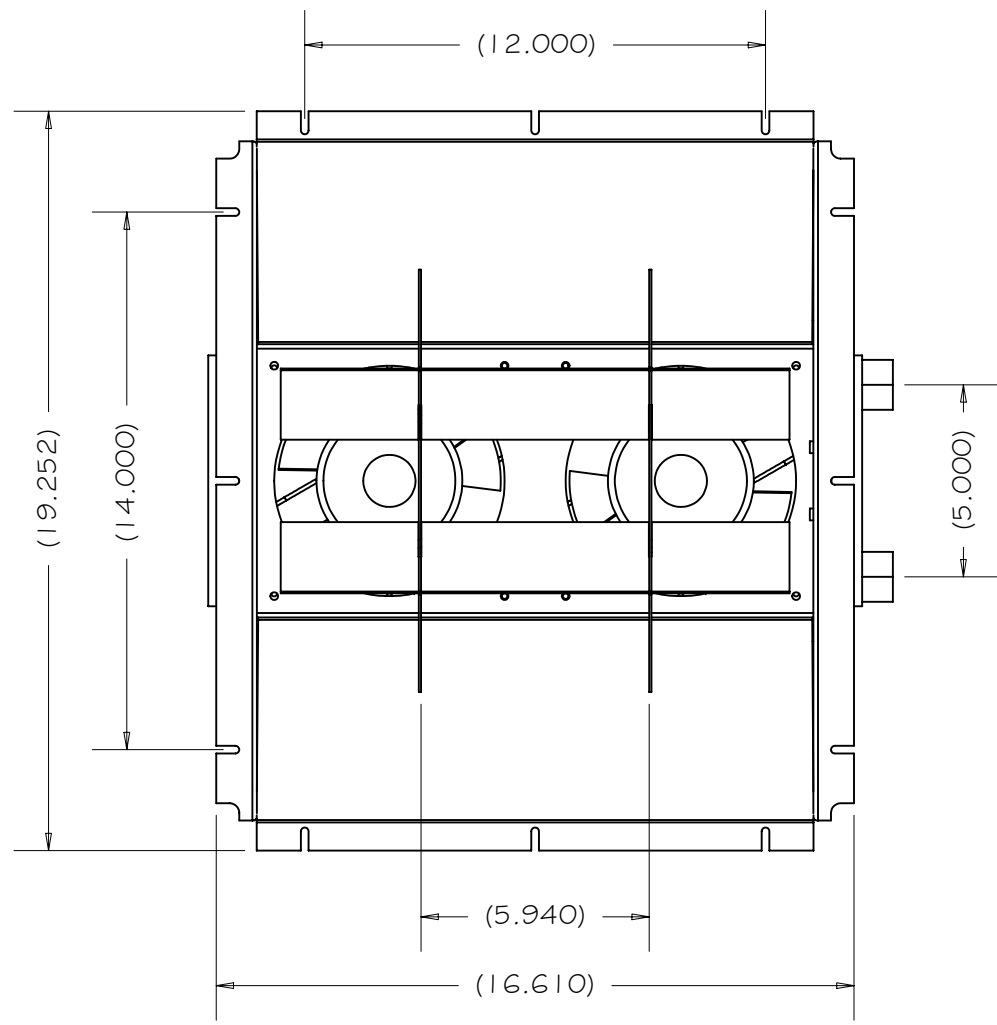


REV	DRWN	CHK'D	DATE	DESCRIPTION
A	GFC	DK	7/23/03	INITIAL RELEASE
B	GFC	TC	8/29/03	ADDED PLUG CUTOUTS AND HOLES FOR TERMINAL STRIP



PARTS LIST				
ITEM	QTY	P/N	DESCRIPTION	
6	1	H-9GG1	VANE ASSEMBLY	
1	1	ES0714G23	HEAT EXCHANGER, LYTRON, ES0714, W/ FANPLATE, P/N ES0714G23	
2	2	101578-01	TARZAN FAN (LYTRON), 115V, P/N 101578-01	
3	1	H-9G58	FAN PLATE	
4	2	H-9G59	PLENUM END	
5	2	H-9G60	PLENUM SIDE	
7	4	H/W	PEM NUT, STAINLESS, 8-32, CL5-832-2	

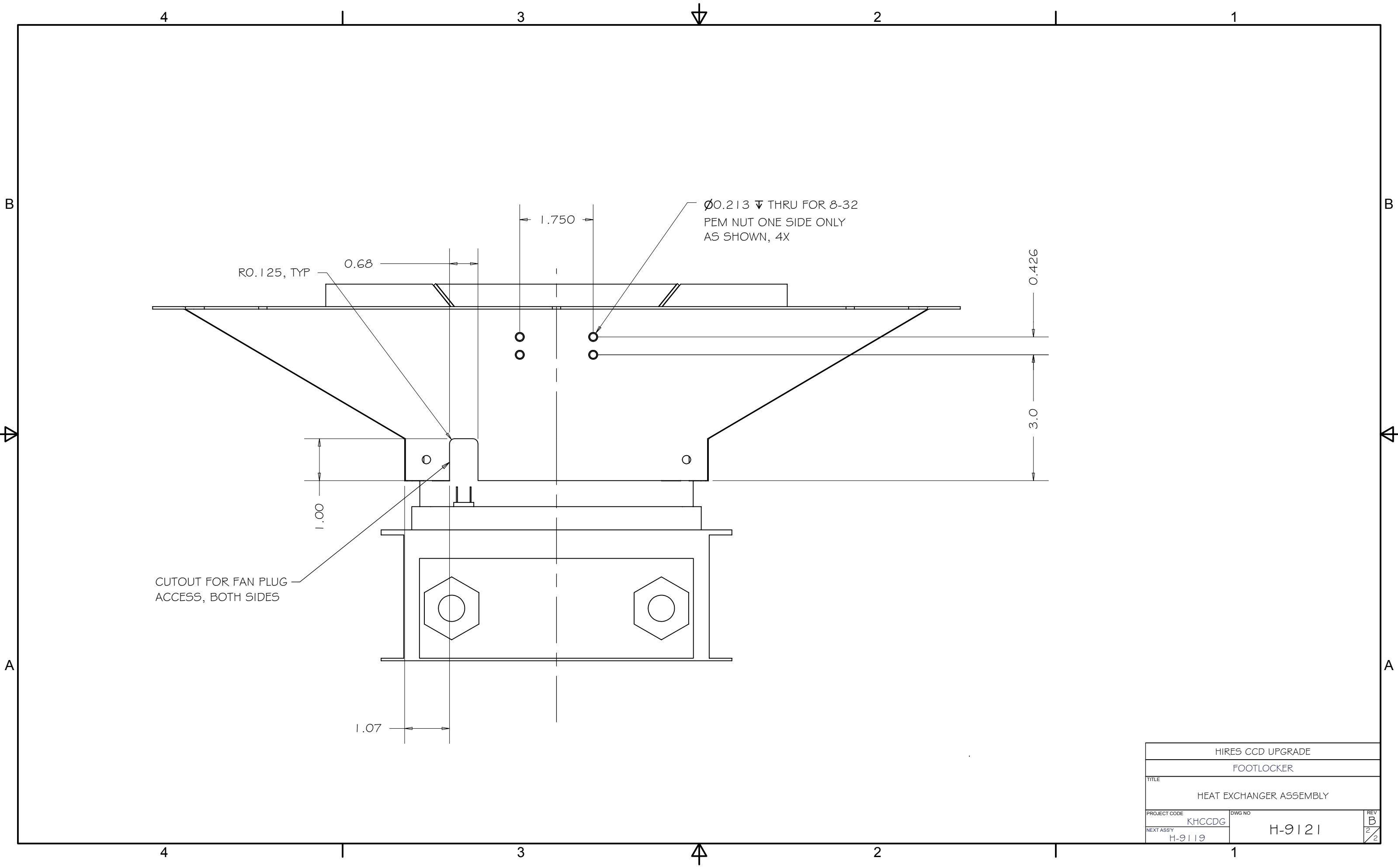
TOLERANCES UNLESS OTHERWISE NOTED:
 FRACTIONAL: 0"-6": ±1/64" 6"-24": ±1/32"
 24"+: ±1/16"
 DECIMAL: X.X: ±0.1000" X.XX: ±0.0100"
 X.XXX: ±0.0050" X.XXXX: ±0.0001"
 ANGLES: ±0.5° FINISH: 125 MICRO INCHES
 BREAK ALL SHARP EDGES & CORNERS 1/64" MAX



DRAWN	G CABAK	7/23/2003	HIRES CCD UPGRADE	
CHECKED	D KANTO		FOOTLOCKER	
DESIGNED	G CABAK		TITLE	
ENGINEER	G CABAK		HEAT EXCHANGER ASSEMBLY	
MATERIAL	PARTS LIST	FINISH	PROJECT CODE	DWG NO
			KHCCDG	H-9121
			NEXT ASSY	REV
			H-9119	B
				1/2

DO NOT SCALE DRAWING

PROJECT CODE: KHCCDG
 DWG NO: H-9121
 NEXT ASSY: H-9119
 REV: B
 1/2



HIRES CCD UPGRADE		
FOOTLOCKER		
TITLE HEAT EXCHANGER ASSEMBLY		
PROJECT CODE KHCCDG	DWG NO H-9121	REV B
NEXT ASSY H-9119		2/2