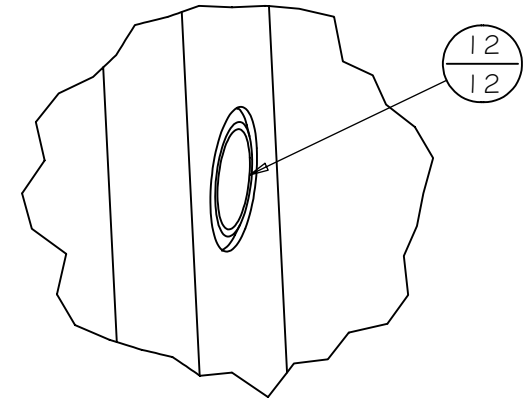
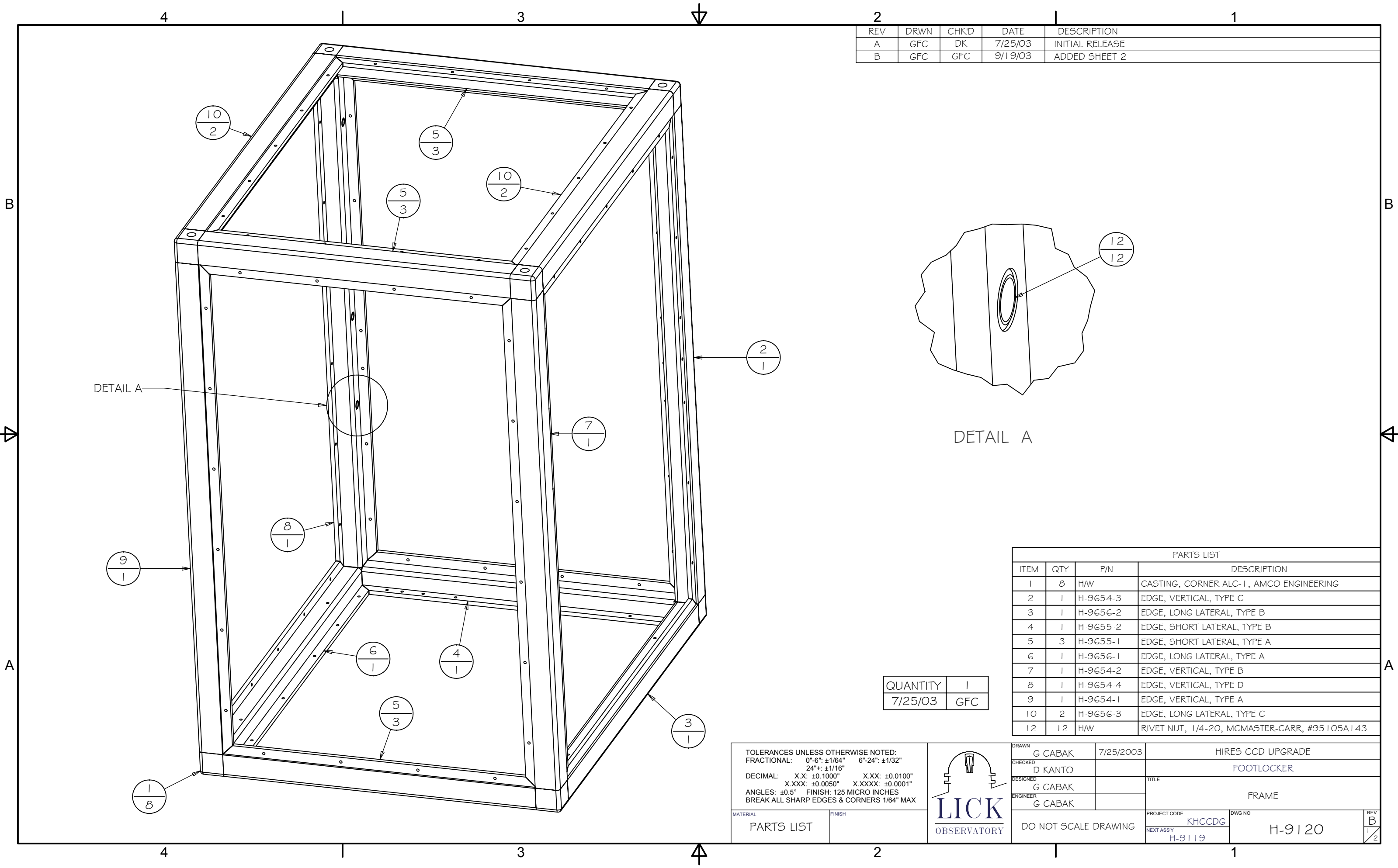


REV	DRWN	CHK'D	DATE	DESCRIPTION
A	GFC	DK	7/25/03	INITIAL RELEASE
B	GFC	GFC	9/19/03	ADDED SHEET 2

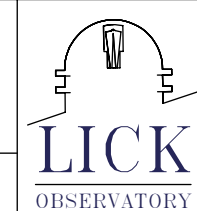


DETAIL A

QUANTITY	1
7/25/03	GFC

PARTS LIST			
ITEM	QTY	P/N	DESCRIPTION
1	8	H/W	CASTING, CORNER ALC-1, AMCO ENGINEERING
2	1	H-9G54-3	EDGE, VERTICAL, TYPE C
3	1	H-9G56-2	EDGE, LONG LATERAL, TYPE B
4	1	H-9G55-2	EDGE, SHORT LATERAL, TYPE B
5	3	H-9G55-1	EDGE, SHORT LATERAL, TYPE A
6	1	H-9G56-1	EDGE, LONG LATERAL, TYPE A
7	1	H-9G54-2	EDGE, VERTICAL, TYPE B
8	1	H-9G54-4	EDGE, VERTICAL, TYPE D
9	1	H-9G54-1	EDGE, VERTICAL, TYPE A
10	2	H-9G56-3	EDGE, LONG LATERAL, TYPE C
12	12	H/W	RIVET NUT, 1/4-20, MCMASTER-CARR, #95105A143

TOLERANCES UNLESS OTHERWISE NOTED:
 FRACTIONAL: 0"-6": ±1/64" 6"-24": ±1/32"
 24"+: ±1/16"
 DECIMAL: X.X: ±0.1000" X.XX: ±0.0100"
 X.XXX: ±0.0050" X.XXXX: ±0.0001"
 ANGLES: ±0.5° FINISH: 125 MICRO INCHES
 BREAK ALL SHARP EDGES & CORNERS 1/64" MAX



DRAWN	G CABAK	7/25/2003	HIRES CCD UPGRADE
CHECKED	D KANTO		FOOTLOCKER
DESIGNED	G CABAK		TITLE
ENGINEER	G CABAK		FRAME
MATERIAL	PARTS LIST	FINISH	
PROJECT CODE	KHCCDG		REV B
NEXT ASSY	H-9119		1/2
DWG NO	H-9120		

DO NOT SCALE DRAWING

