

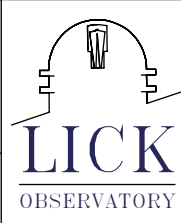
REV	DRWN	CHK'D	DATE	DESCRIPTION
A	GFC	GFC	12/12/02	INITIAL RELEASE
B	GFC	TP	1/14/03	REDESIGNED BACKPLANE AND SPLASH GUARD
C	GFC	GFC	6/6/03	REMOVED SPLASH GUARD (ITEM 4)
D	GFC	GFC	9/26/03	ADDED DIMENSIONS ON SHEET 2
E	GFC	TP	10/3/03	ADDED NOTE, CORRECTED TITLE
F	GFC	GFC	11/20/03	ADDED NOTE 2

NOTES

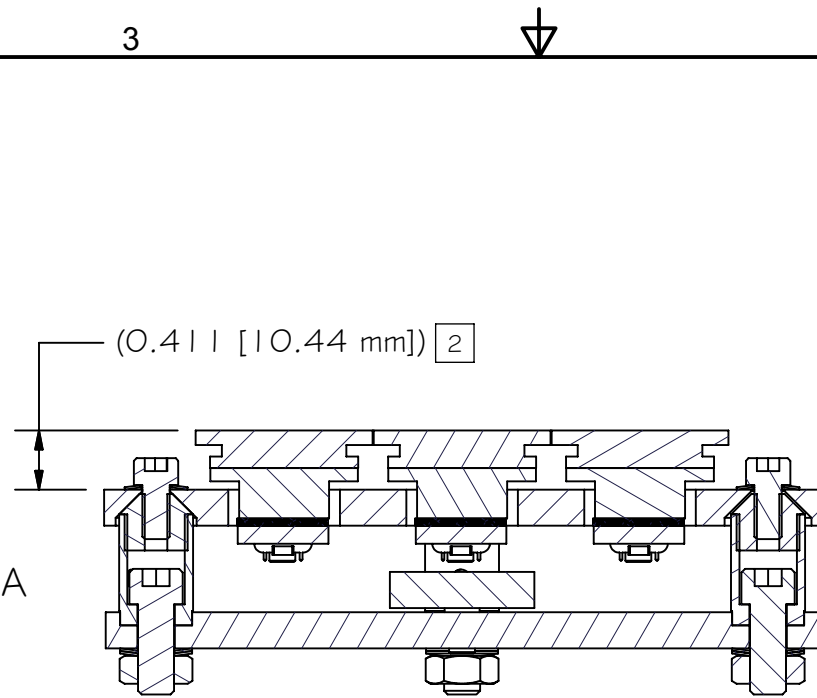
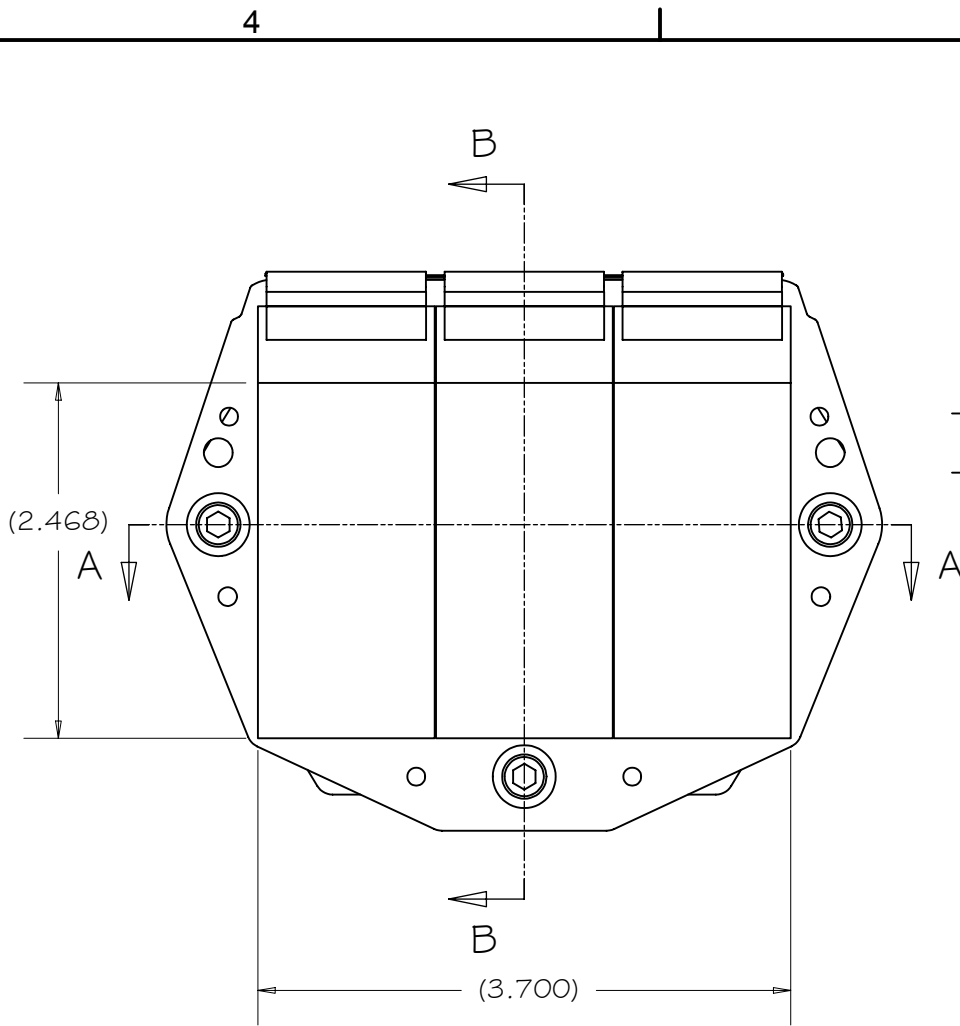
- 1 SHIM BETWEEN STAND OFFS (ITEM 7) AND KINEMATIC HARDPOINTS (ITEMS 8&9) AS REQUIRED TO LEVEL CCD BACKPLANE
- 2 SEE H-9609 FOR AS-BUILT DIMENSIONS

Parts List			
ITEM	QTY	PART NUM	DESCRIPTION
1	1	H-9439	CCD MOSAIC ASSEMBLY
2	3	H-9418	HEATER/DIODE PLATE ASSEMBLY
3	3	H-9410	CCD STRAP ASSEMBLY
5	1	H-9402	THERMAL SPIDER
6	1	H-9412	STAGE PLATE
7	3	H-9409	STAND OFF
8	2	H-9407	HARD POINT, CONE KINEMATIC
9	1	H-9408	HARD POINT, FLAT KINEMATIC
10	6	H-9417	INSERT, DELRIN
11	3	H-9420	CCD STRAP CLAMP
12	6	H/W	SCREW, SHCS, 4.40 x .3125
13	12	H/W	WASHER, BELLEVILLE, .250 OD x .009 THK
14	3	H/W	SCREW, SHCS, 1/4-20 x .625
15	6	H/W	WASHER, BELLEVILLE, .500 OD x .018 THK
16	3	H/W	SCREW, SHCS, 4-40 x .375
17	3	H/W	WASHER, BELLEVILLE, .437 OD x .016 THK
18	3	H/W	SCREW, SHCS, 10-32 x .375
19	6	H/W	SCREW, SHCS, 4-40 x .25
20	3	H/W	NUT, 1/4-20

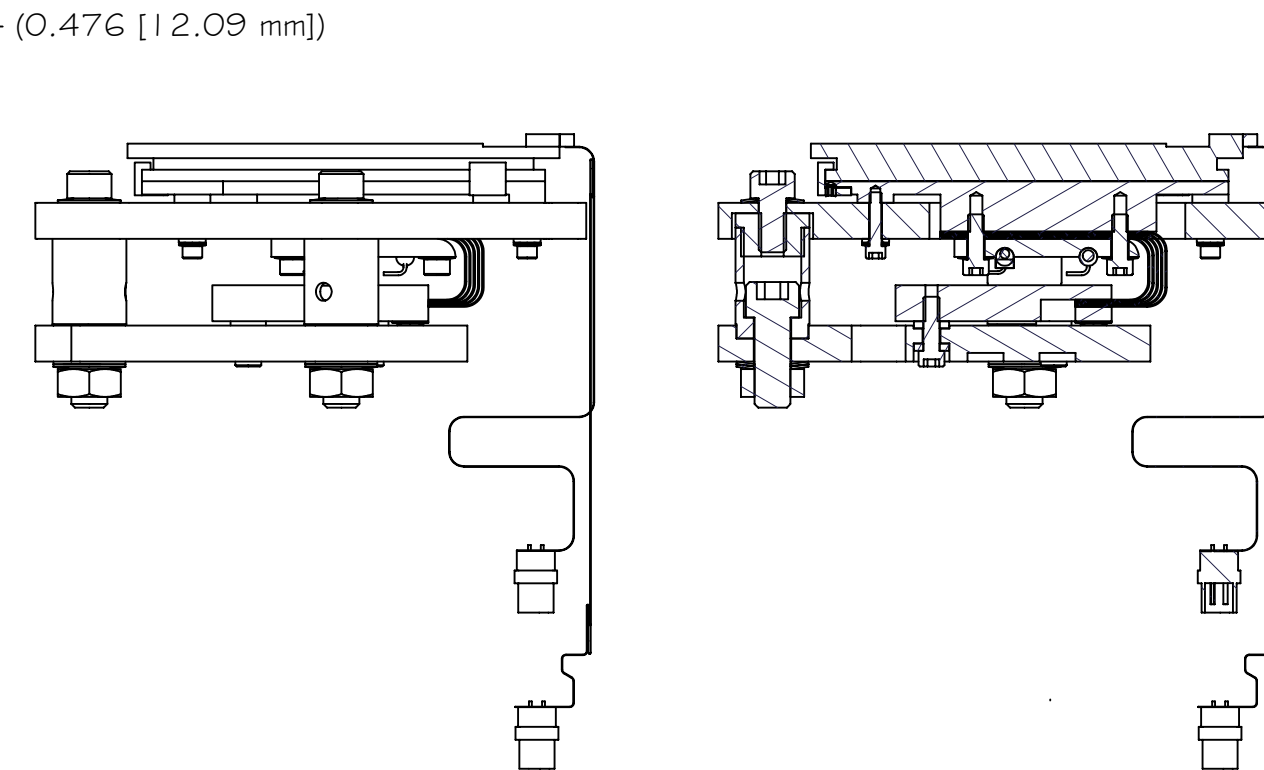
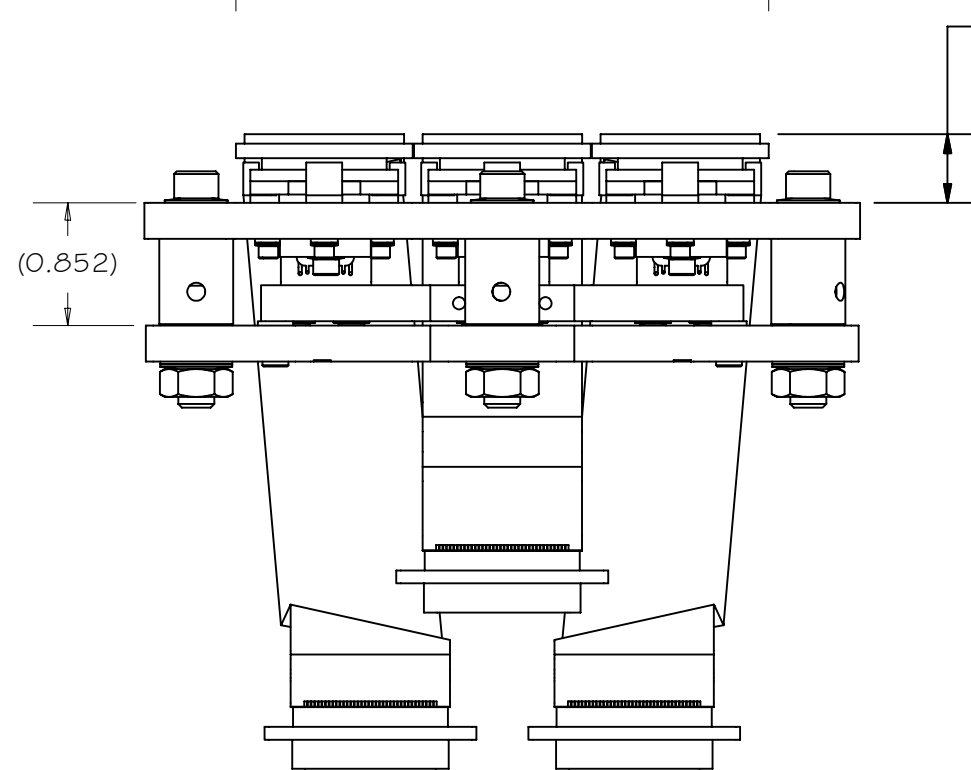
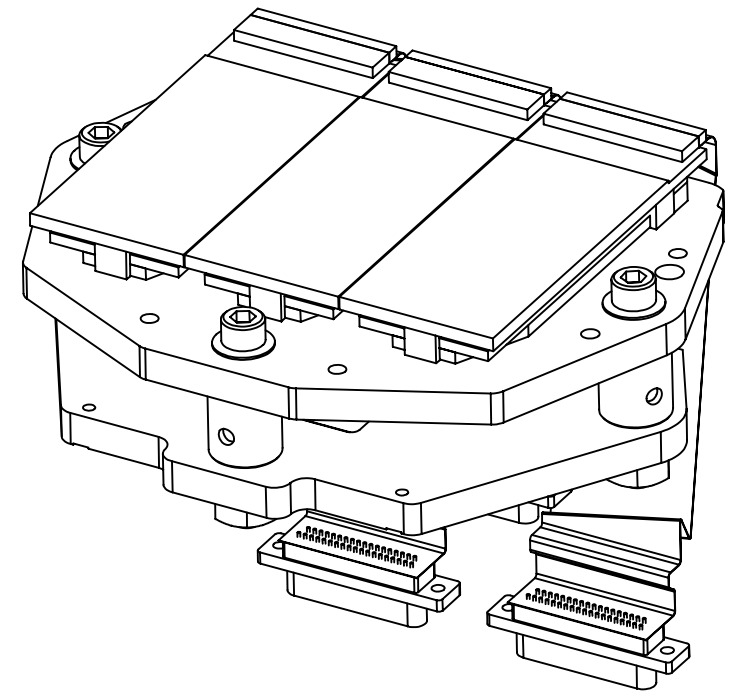
TOLERANCES UNLESS OTHERWISE NOTED:
 FRACTIONAL: 0"-6": ±1/64" 6"-24": ±1/32"
 24"+: ±1/16"
 DECIMAL: X.X: ±0.1000" X.XX: ±0.0100"
 X.XXX: ±0.0050" X.XXXX: ±0.0001"
 ANGLES: ±0.5° FINISH: 125 MICRO INCHES
 BREAK ALL SHARP EDGES & CORNERS 1/64" MAX



DRAWN	G CABAK	10/14/2002	HIRES CCD UPGRADE
CHECKED		10/29/2002	MAJOR ASSEMBLIES
DESIGNED	G CABAK		TITLE
ENGINEER	G CABAK	10/29/2002	CCD ASSEMBLY
MATERIAL	PARTS LIST	FINISH	
DO NOT SCALE DRAWING		PROJECT CODE	KHCCDE
		NEXT ASSY	H-9112
		DWG NO	H-9111
			REV F
			1/2



SECTION A-A



SECTION B-B

HIRES CCD UPGRADE		
MAJOR ASSEMBLIES		
TITLE CCD ASSEMBLY		
PROJECT CODE KHCCDE	DWG NO H-9111	REV F
NEXT ASSY H-9112		2/2