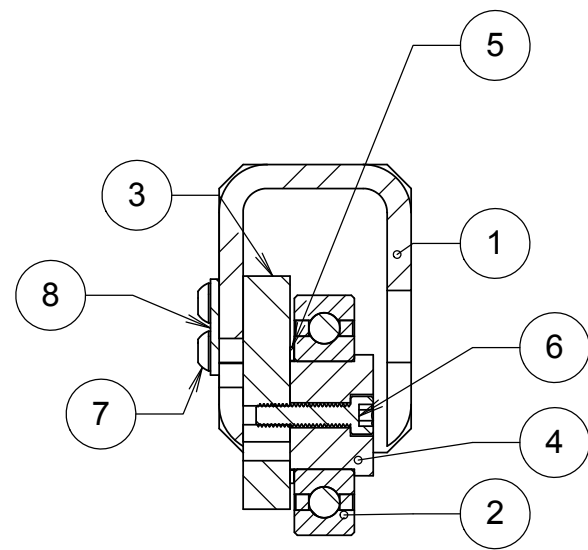
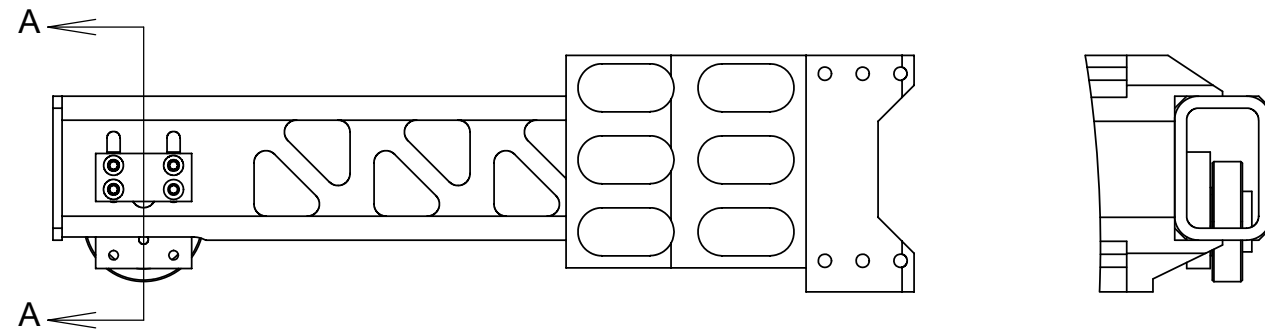
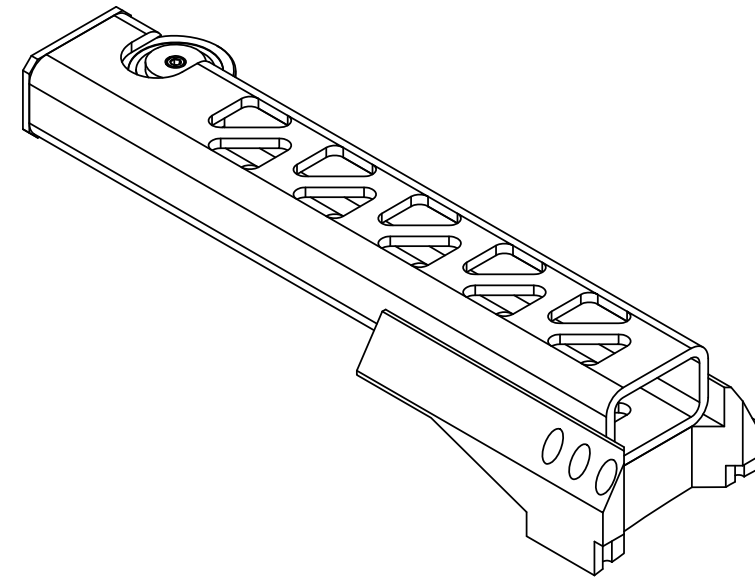


REVISIONS				
REV	DATE	DRWN	CHKD	DESCRIPTION
A	13AUG15	CR		PRE- RELEASE



SECTION A-A
SCALE 1 : 2



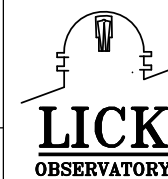
ITEM NO.	SW-File Name(File Name)	QTY.
1	ANTI_TIP_WHEEL MOUNT B	1
2	2.5inch_OD_Bearing_2780T670	1
3	Flat_Wheel_Mount	1
4	Bearing_Holder	1
5	MC_shim_spacer 97022A464	1
6	SHCS_M6x25mm_93705A846	1
7	MC_sbhcs_M6x16_92095A238	4
8	Wheel Mount Washer Plate	1

NOTES

- MAY NEED TO REMOVE MORE MATERIAL FROM ITEM 1 DUE TO LARGE WELD BEAD ON OUTER DRUM
- APPLY LOCTITE TO ITEMS 6 AND 7 PRIOR TO FINAL INSTALLATION
- ITEMS 6 AND 7 MUST BE TIGHTENED WITH TORQUE WRENCH

UNLESS OTHERWISE NOTED DIMENSIONS ARE IN MILLIMETERS & TOLERANCES ARE AS FOLLOWS:
 X: ±0.25mm X.X: ±0.10 mm X.XX: ±0.01 mm
 ANGLES: ±0.5° FINISH: 3 MICRONS (µm)
 BREAK ALL SHARP EDGES & CORNERS .25mm MAX

MATERIAL	FINISH
--	--



DRAWN RATLIFF	9/25/15	KECK 1 DEPLOYABLE TERTIARY MIRROR	
CHECKED		OUTER DRUM ASSEMBLY	
DESIGNED	SEP2015	TITLE ANTI-TIP ARM B, FLAT SIDE	
ENGINEER		PROJECT CODE K1D3DD	DWG NO KDM3120
SW DOCUMENT FILE Full_Anti_Tip_Assy_B.sldasm	QUANTITY ---	NEXT ASSY --	REV A 1/1