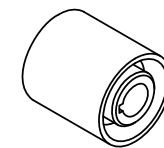
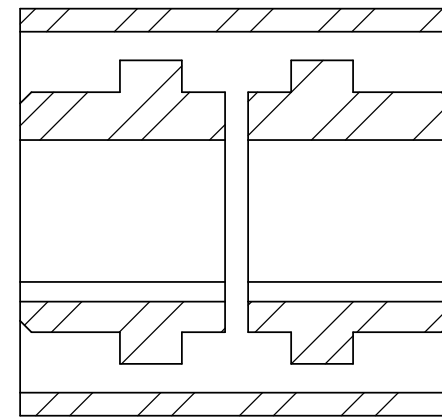
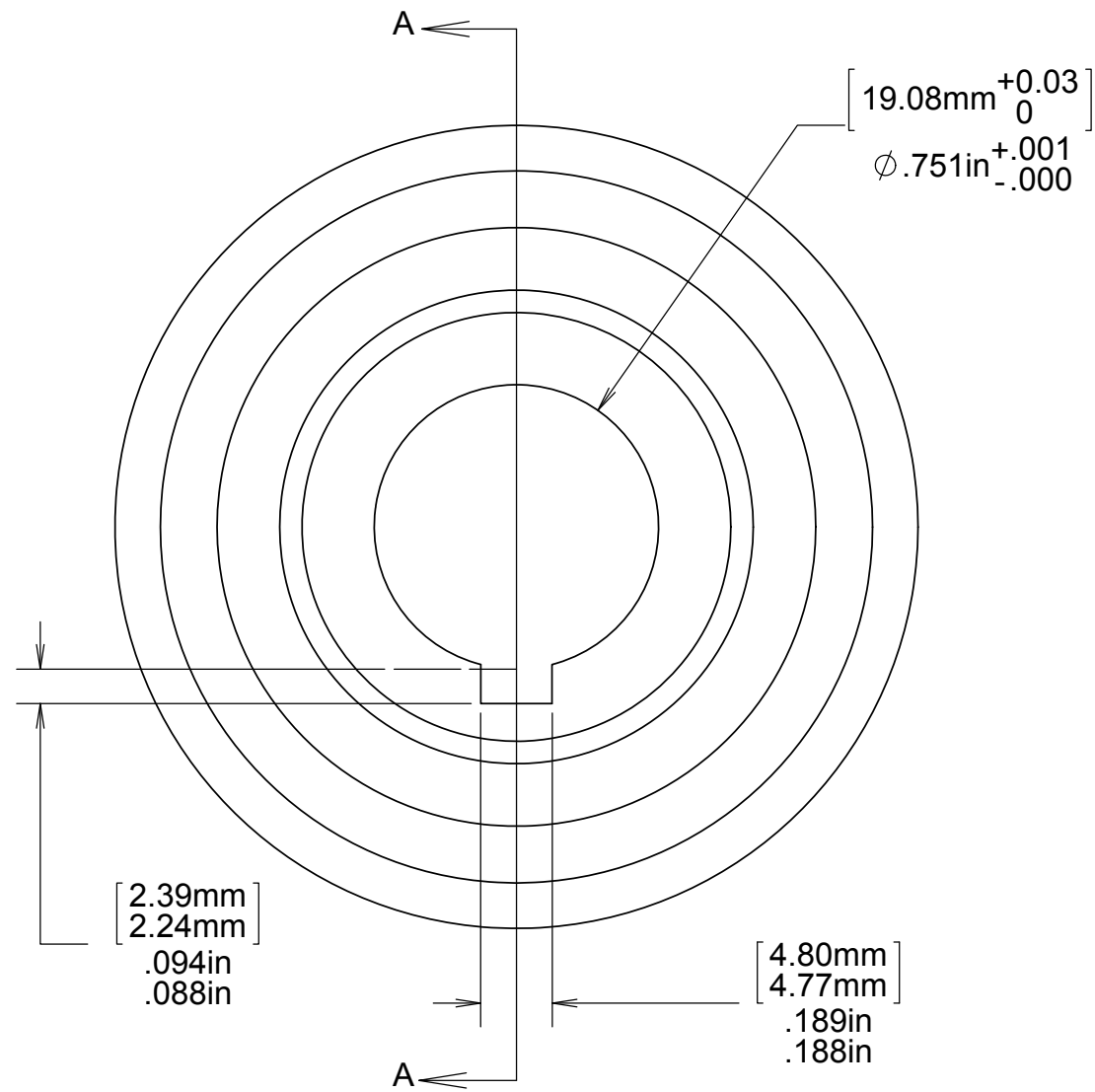


REVISIONS				
DRWN	DATE	CHK'D	REV	DESCRIPTION
CR	11SEP15		A	PRELIMINARY RELEASE



- NOTES:
- DRAWING ONLY FOR MODIFICATION OF ORIGINAL PART AMERIGEAR C200 COUPLING HUB
  - KEYWAYS SHOULD NOT LINE UP AFTER ASSEMBLY ONTO SHAFTS

UNLESS OTHERWISE NOTED DIMENSIONS ARE IN MILLIMETERS & TOLERANCES ARE AS FOLLOWS:  
 X:  $\pm 0.25\text{mm}$  X.X:  $\pm 0.20\text{mm}$  X.XX:  $\pm 0.01\text{mm}$   
 ANGLES:  $\pm 0.5^\circ$  FINISH: 3 MICRONS ( $\mu\text{m}$ )  
 BREAK ALL SHARP EDGES & CORNERS .25mm MAX

MATERIAL	FINISH
NA	NONE



DRAWN  
**C. RATLIFF**  
CHECKED  
DESIGNED  
**C. RATLIFF**  
ENGINEER

SW DOCUMENT FILE  
Amerdrive C200 Coupling

PROJECT CODE  
**K1D3DD**  
NEXT ASSY  
KDM3100

TITLE  
**KECK 1 DEPLOYABLE TERTIARY MIRROR  
K1DM3 STATOR  
GEAR COUPLING, AIR MOTOR**

QUANTITY  
**4 EA**

DWG NO  
**KDM3110**

REV  
**A**  
1/1