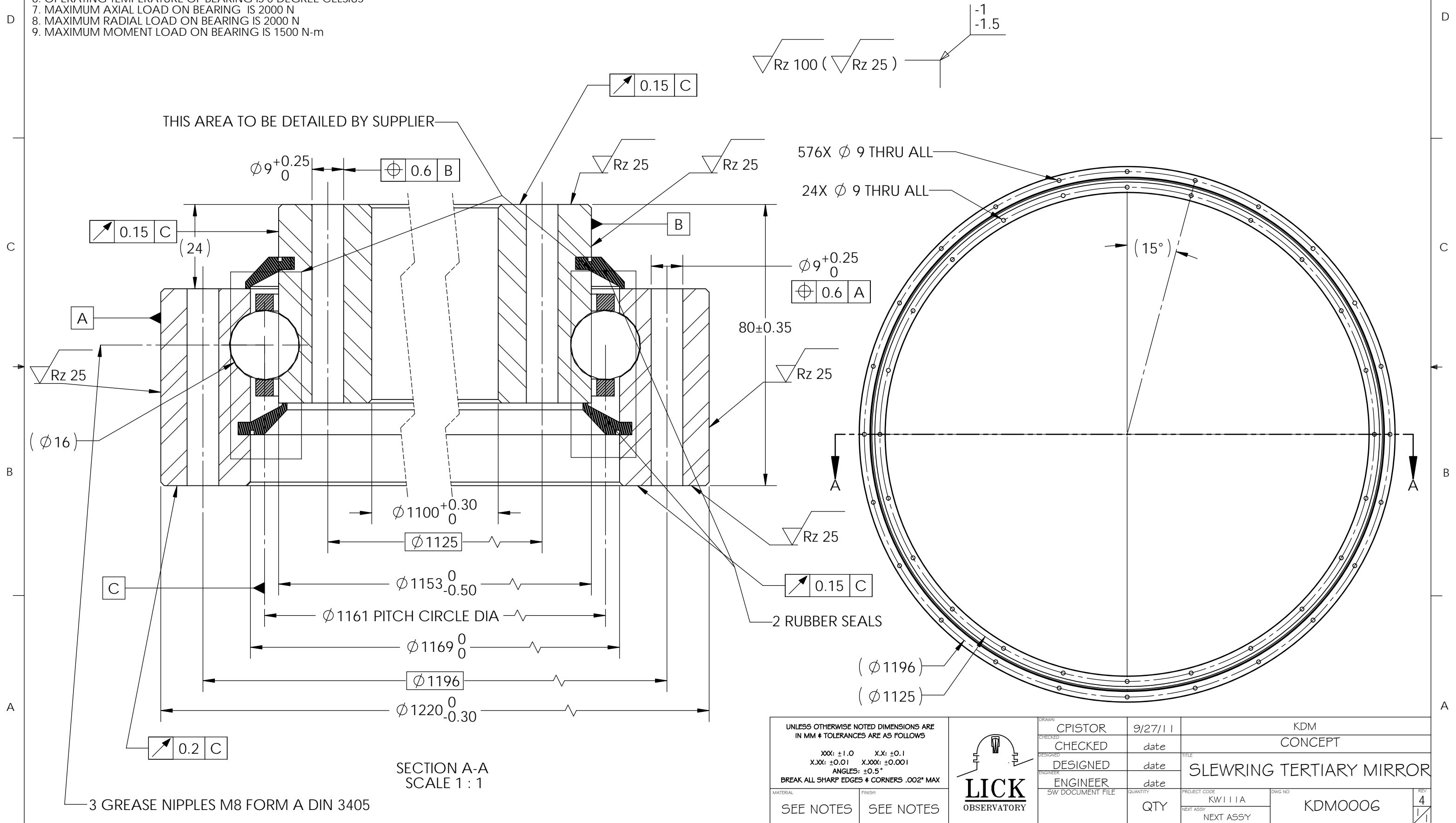


NOTES (UNLESS OTHERWISE SPECIFIED):

1. BEARING TO BE DIAMETRICALLY PRELOADED 0.000-0.013MM
2. BEARING TO BE FOUR-POINT-CONTACT BEARING WITH 35 DEGREE CONTACT ANGLE
3. MATERIAL FOR RACES 42CrMo4V65
4. BEARING TO BE LUBRICATED WITH AEROSHELL GREASE 22 ACCORDING TO MIL-PRF-82322F
5. MAXIMUM MOMENT WITHOUT LOAD 20 Nm
6. OPERATING TEMPERATURE OF BEARING IS 0 DEGREE CELSIUS
7. MAXIMUM AXIAL LOAD ON BEARING IS 2000 N
8. MAXIMUM RADIAL LOAD ON BEARING IS 2000 N
9. MAXIMUM MOMENT LOAD ON BEARING IS 1500 N-m

REV	DRWN	DATE	DESCRIPTION
1	PISTOR	27SEP11	INITIAL DESIGN
2	PISTOR	21OCT11	CHANGED CENTERING
3	PISTOR	31OCT11	RUN-OUT DIMS, NOTES
4	PISTOR	17NOV11	SURFACE SPECS



SECTION A-A  
SCALE 1 : 1

3 GREASE NIPPLES M8 FORM A DIN 3405

UNLESS OTHERWISE NOTED DIMENSIONS ARE IN MM & TOLERANCES ARE AS FOLLOWS

XXX: ±1.0    X.X: ±0.1  
 X.XX: ±0.01    X.XXX: ±0.001  
 ANGLES: ±0.5°  
 BREAK ALL SHARP EDGES & CORNERS .002" MAX

MATERIAL	FINISH
SEE NOTES	SEE NOTES

	DRAWN	CPISTOR	9/27/11	KDM
	CHECKED		date	
	DESIGNED		date	TITLE
	ENGINEER		date	
MATERIAL	FINISH	PROJECT CODE	DWG NO	REV
SEE NOTES	SEE NOTES	KW111A	KDM0006	4
		NEXT ASSY		