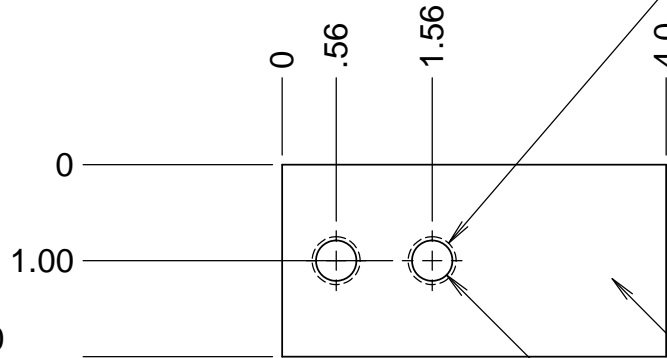


REVISIONS				
DRWN	DATE	CHK'D	REV	DESCRIPTION
CR	12OCT2017		A	PRELIMINARY RELEASE

THESE HOLES CONCENTRIC TO STEEL ANGLE HOLES

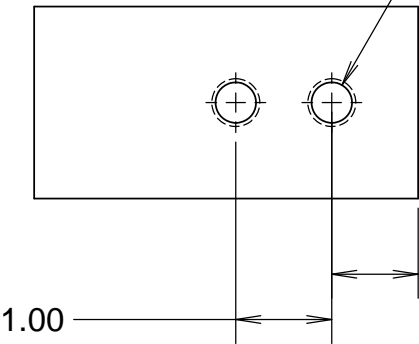


2.0
SEE NOTE 2.

2X ϕ .42 ∇ 1.23
1/2-13 UNC ∇ 1.00



2X ϕ .42 ∇ 1.23
1/2-13 UNC ∇ 1.00



2X ϕ .42 ∇ 1.23
1/2-13 UNC ∇ 1.00

.90
SEE NOTE 3.

- NOTES:
1. MATERIAL: ALUMINUM OR STEEL
 2. CAN USE 1.5 OR 1.75 INCH WIDE MATERIAL RATHER THAN 2 INCH WIDE, HOLE LOCATION SHOULD BE HALF THE WIDTH
 3. DRILL IN PLACE SO HOLES MATCH WITH LOWER MEMBER OF HEX FRAME

UNLESS OTHERWISE NOTED DIMENSIONS ARE IN INCHES & TOLERANCES ARE AS FOLLOWS X.X: $\pm 0.1000''$ X.XX: $\pm 0.0100''$ X.XX: $\pm 0.0050''$ X.XXXX: $\pm 0.0001''$ ANGLES: $\pm 0.5^\circ$ FINISH: 125 MICRO INCHES BREAK ALL SHARP EDGES & CORNERS .002" MAX		DRAWN C. RATLIFF CHECKED DM DESIGNED C. RATLIFF ENGINEER		KECK 1 DEPLOYABLE TERTIARY MIRROR K1DM3 TOOLING	
MATERIAL SEE NOTE 1.		LICK OBSERVATORY		TITLE HEX FIXTURE CONNECTION BLOCK	
FINISH		SW DOCUMENT FILE 872-LM8669 Hex Fixture Connection Block	QUANTITY 4	PROJECT CODE K1D3FD NEXT ASSY 872-LM0000	REV A 1/1