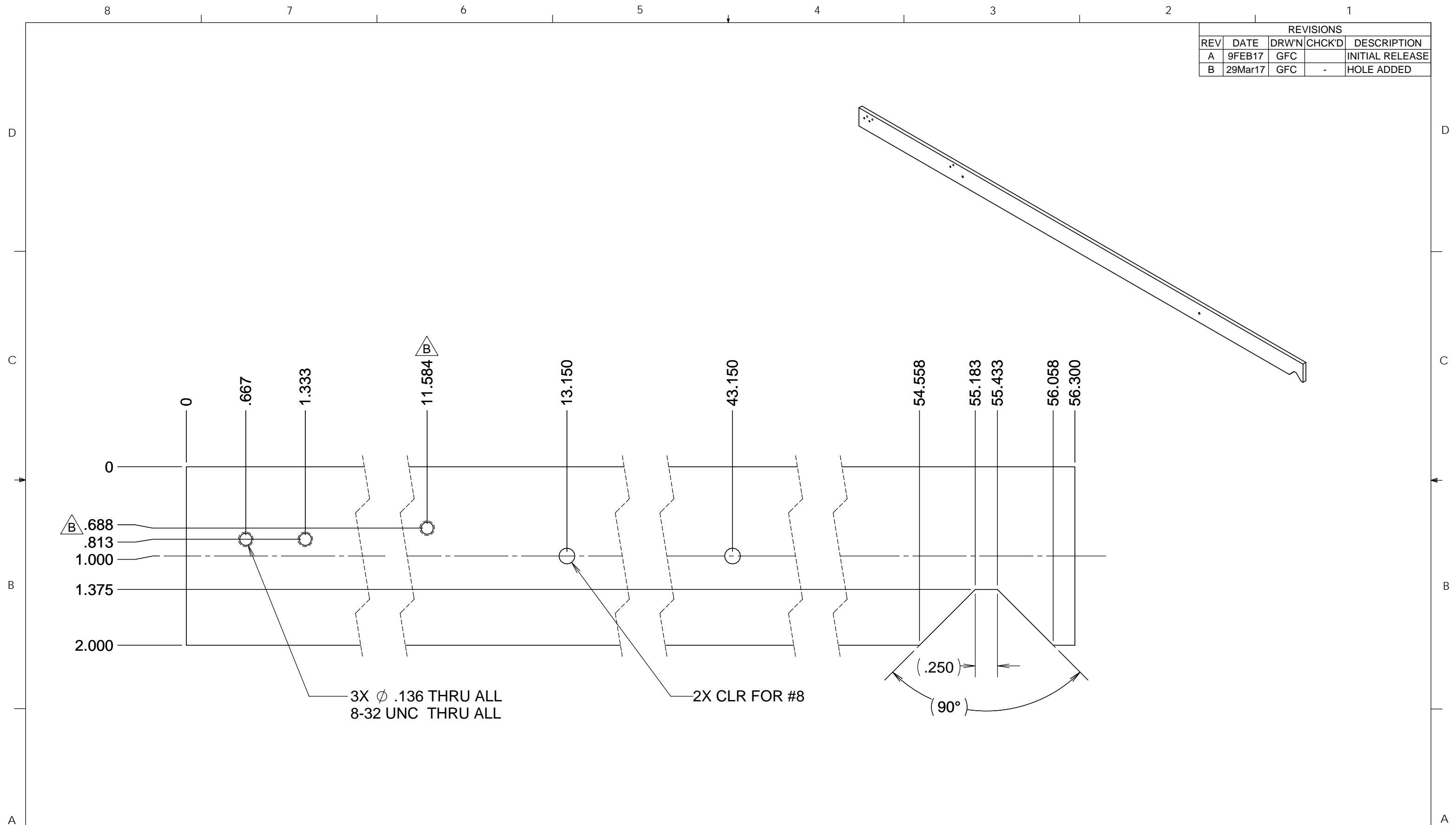


REVISIONS				
REV	DATE	DRW'N	CHCK'D	DESCRIPTION
A	9FEB17	GFC		INITIAL RELEASE
B	29Mar17	GFC	-	HOLE ADDED



NOTES

1 CAD MODEL FILENAME, 872-LM8135 FootPrint Rail Bar

UNLESS OTHERWISE NOTED DIMENSIONS ARE IN INCHES & TOLERANCES ARE AS FOLLOWS

X.X: $\pm 0.1000''$ X.XX: $\pm 0.0100''$
 X.XXX: $\pm 0.0050''$ X.XXXX: $\pm 0.0001''$
 ANGLES: $\pm 0.5^\circ$ FINISH: 125 MICRO INCHES
 BREAK ALL SHARP EDGES & CORNERS .002" MAX

MATERIAL: AL 5xxx/6xxx 3/8 X 2 BAR FINISH: 64



DRAWN	CABAK	--	KECK 1 DEPLOYABLE TERTIARY MIRROR
CHECKED	--	--	TOOLING & FISTURING
DESIGNED	CABAK	--	TITLE
ENGINEER	CABAK	--	RAIL BAR, FOOTPRINT
SW DOCUMENT FILE	1	PROJECT CODE	K1D3FD
		DWG NO	872-LM8135
		NEXT ASSY	--
			B 1/1