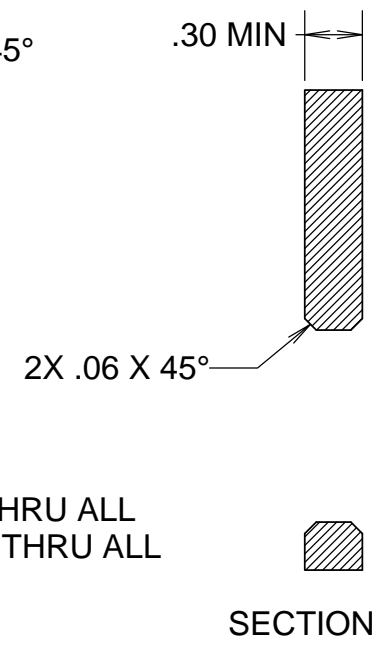
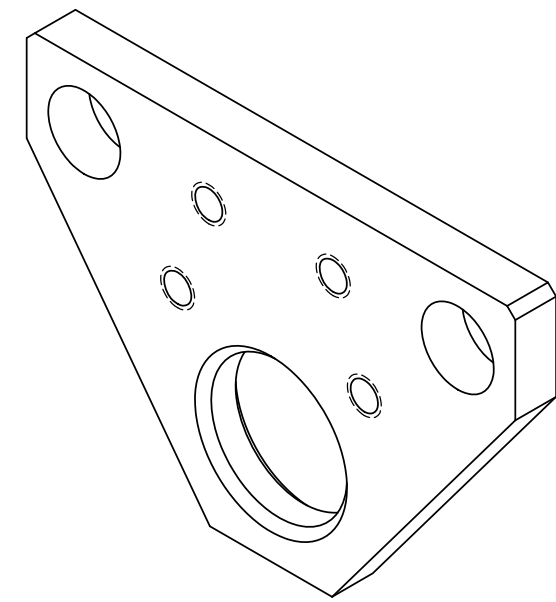
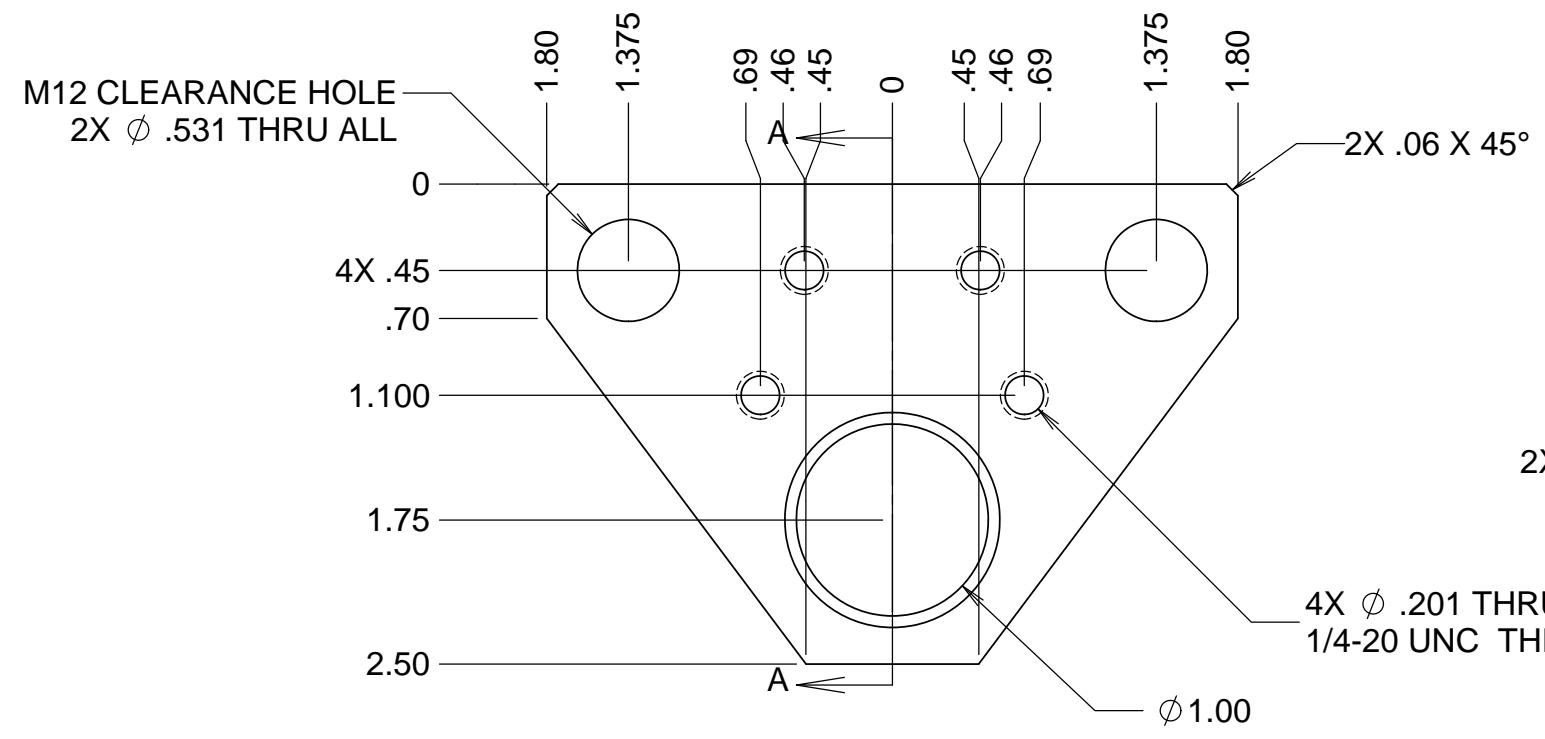


REVISIONS				
REV	DATE	DRW'N	CHCK'D	DESCRIPTION
A	21DEC17	GFC	AP	INITIAL RELEASE
B	08JAN18	GFC	MP	CHAMFER ADDED
C	08JAN18	GFC	--	DESIGN CHANGE
D	13NOV18	GFC	BR(KECK)	NEXT ASSY

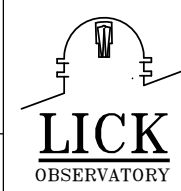


**NOTES**

1 CAD MODEL FILENAME, 872-LM4535 Lift Eye Plate

UNLESS OTHERWISE NOTED DIMENSIONS ARE IN INCHES & TOLERANCES ARE AS FOLLOWS

X.X: ±0.1000"	X.XX: ±0.0100"
X.XXX: ±0.0050"	X.XXXX: ±0.0001"
ANGLES: ±0.5° FINISH: 125 MICRO INCHES BREAK ALL SHARP EDGES & CORNERS .002" MAX	
MATERIAL AL 5/6XXX	FINISH BLACK ANODIZE OR AEROGLAZE



DRAWN CABAK	--	PROJECT CODE K1D3FD	DWG NO 872-LM4700	D 1/1
CHECKED --	--	TITLE LIFTING EYE PLATE		
DESIGNED CABAK	--	PROJECT CODE 872-LM4700		
DRAWN/CHECKED CABAK	--	DWG NO 872-LM4535		