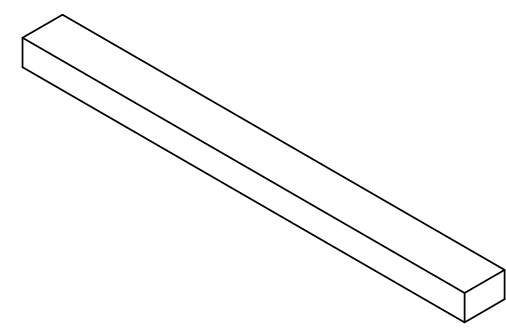
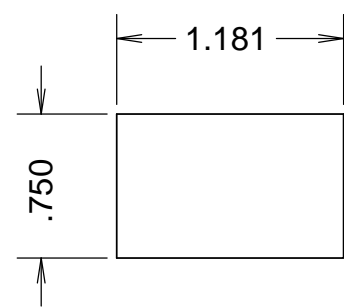
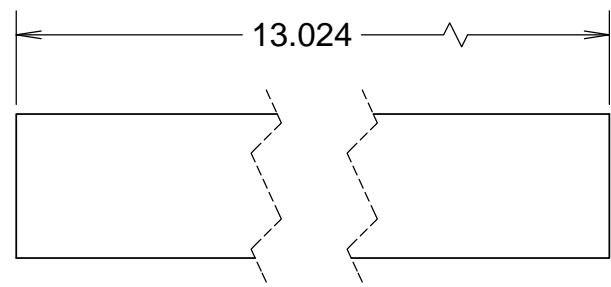
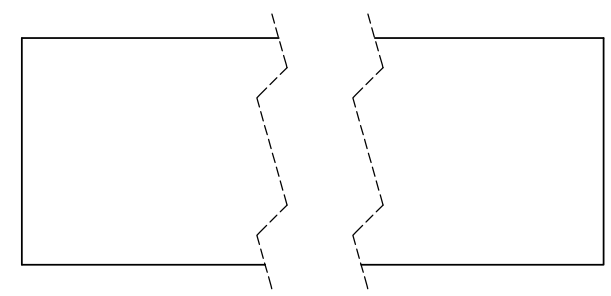


REVISIONS				
REV	DATE	DRW'N	CHCK'D	DESCRIPTION
A	19APR16	GFC	--	INITIAL RELEASE
B	09MAY16	GFC	--	REMOVED CHAMFER
C	10MAY16	GFC	--	MATERIAL CHANGE

D  
C  
B  
A

D  
C  
B  
A



**NOTES**

1 ASTM A500 OR EQUIVALENT

UNLESS OTHERWISE NOTED DIMENSIONS ARE IN INCHES & TOLERANCES ARE AS FOLLOWS  
 X.X: ±0.1000" X.XX: ±0.0100"  
 X.XXX: ±0.0050" X.XXXX: ±0.0001"  
 ANGLES: ±0.5° FINISH: 125 MICRO INCHES  
 BREAK ALL SHARP EDGES & CORNERS .002" MAX

MATERIAL: NOTE 1 FINISH: 64/√



DRAWN	CABAK	--	KECK 1 DEPLOYABLE TERTIARY MIRROR
CHECKED	--	--	SWING ARM
DESIGNED	CABAK	--	TITLE BASE BAR, TYPE 2
ENGINEER	CABAK	--	
SW DOCUMENT FILE			PROJECT CODE K1D3FD
			DWG NO 872-LM4510-07
			NEXT ASSY --
			C 1/1

8 7 6 5 4 3 2 1