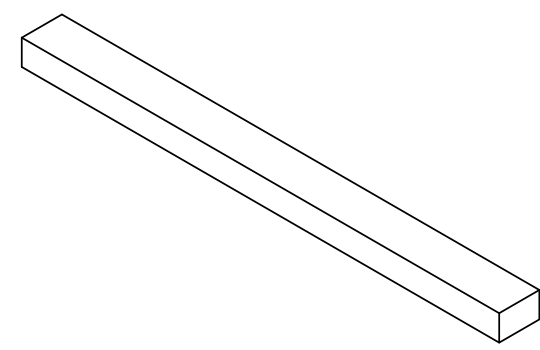
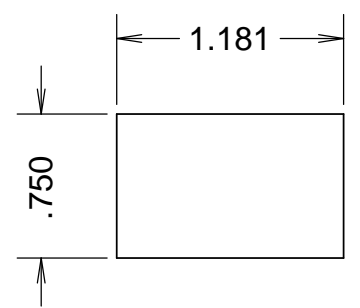
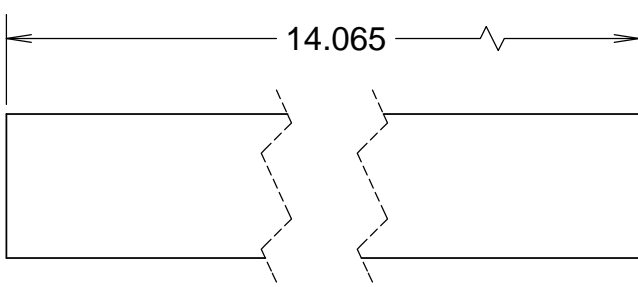
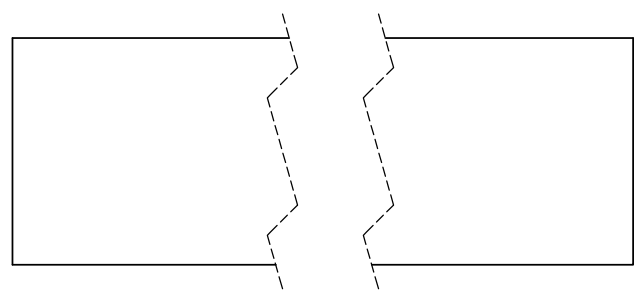


REVISIONS				
REV	DATE	DRW'N	CHCK'D	DESCRIPTION
A	19APR16	GFC	--	INITIAL RELEASE
B	09MAY16	GFC	--	CHAMFER REMOVED
C	10MAY16	GFC	--	MATERIAL CHANGE



NOTES

1 ASTM A500 OR EQUIVALENT

UNLESS OTHERWISE NOTED DIMENSIONS ARE IN INCHES & TOLERANCES ARE AS FOLLOWS
 X.X: ±0.1000" X.XX: ±0.0100"
 X.XXX: ±0.0050" X.XXXX: ±0.0001"
 ANGLES: ±0.5° FINISH: 125 MICRO INCHES
 BREAK ALL SHARP EDGES & CORNERS .002" MAX

MATERIAL: **NOTE 1** FINISH: **64** ✓



DRAWN: CABAK --
 CHECKED: -- --
 DESIGNED: CABAK --
 ENGINEER: CABAK --

PROJECT CODE: K1D3FD
 DWG NO: 872-LM4510-06
 TITLE: BASE BAR, TYPE 1
 SHEET: C 1/1