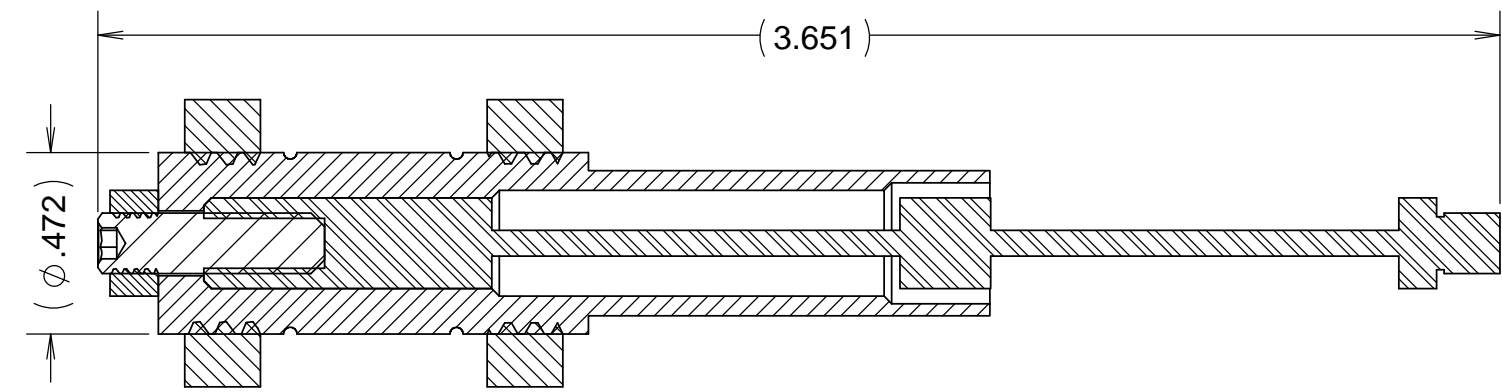
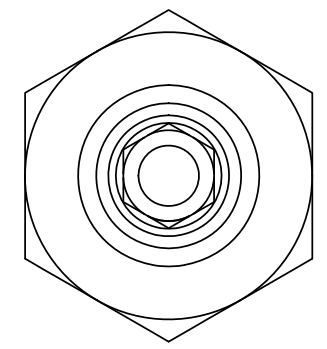
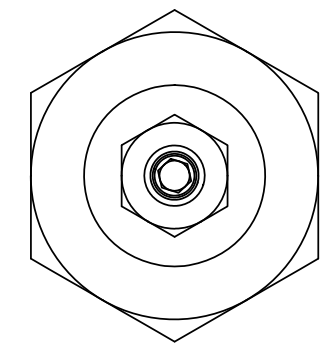
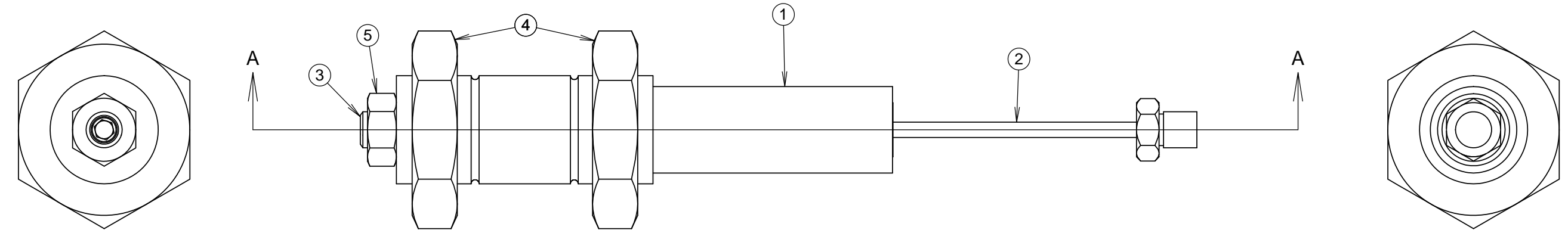
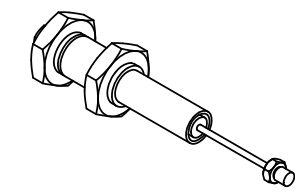


REVISIONS				
REV	DATE	DRW'N	CHCK'D	DESCRIPTION
A	23JUN16	GFC	--	INITIAL RELEASE
B	12JUL16	GFC	JW	DESIGN CHANGE



SECTION A-A

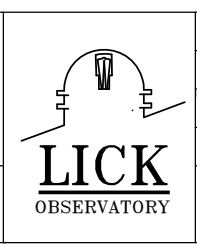


ITEM	QTY	P/N	DESCRIPTION
1	1	872-LM4019	AXIAL ROD SLEEVE
2	1	872-LM4015	AXIAL FLEXURE ROD
3	1	H/W	SET SCREW, M4 X 15
4	2	H/W	NUT, M12, THIN
5	1	H/W	NUT, M4

UNLESS OTHERWISE NOTED DIMENSIONS ARE IN INCHES & TOLERANCES ARE AS FOLLOWS

X.X: ±0.1000" X.XX: ±0.0100"
 X.XXX: ±0.0050" X.XXXX: ±0.0001"
 ANGLES: ±0.5° FINISH: 125 MICRO INCHES
 BREAK ALL SHARP EDGES
 & CORNERS .002" MAX

PARTS LIST



DRAWN	CABAK	--	KECK 1 DEPLOYABLE TERTIARY MIRROR
CHECKED	--	--	MIRROR ASSEMBLY
DESIGNED	CABAK	--	TITLE
APPROVED	CABAK	--	AXIAL FLEXURE ROD ASSEMBLY
SW DOCUMENT FILE	872-LM4021 Axial Flex Rod Assy	PROJECT CODE	K1D3FD
		DWG NO	872-LM4021
		NEXT ASSY	872-LM4200
			B 1/1