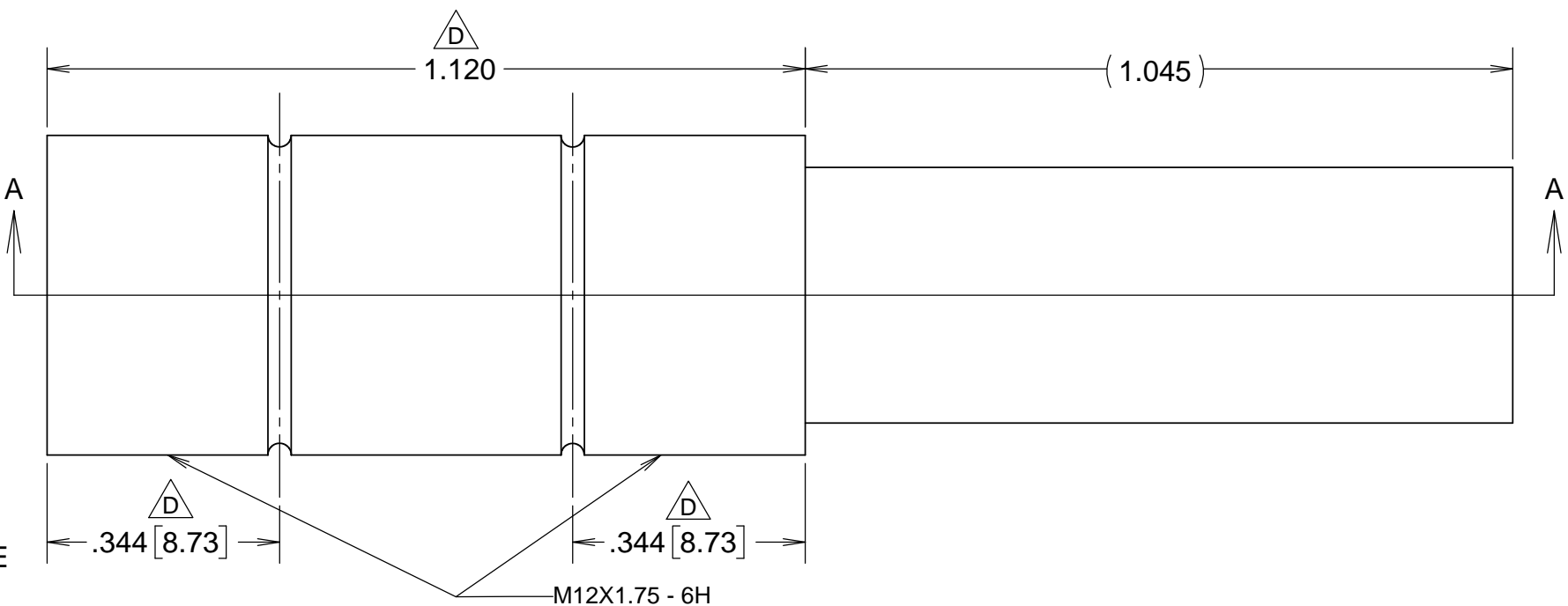
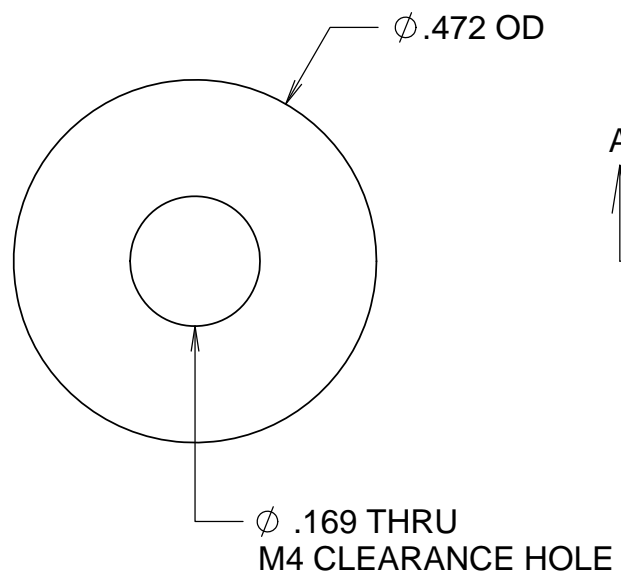
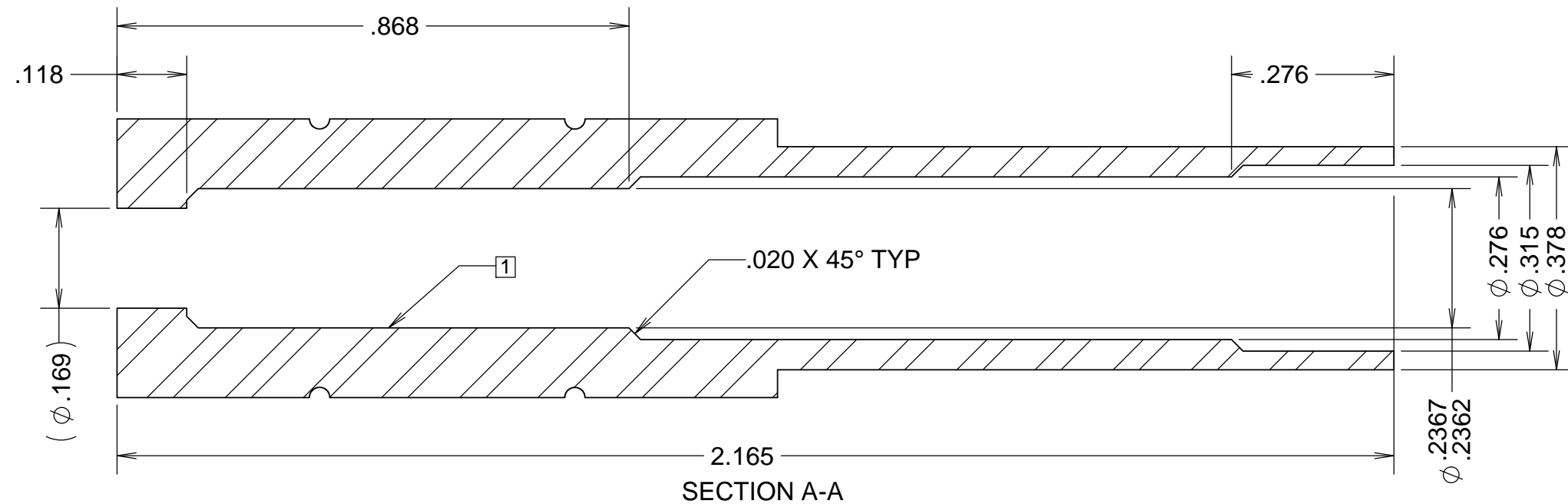


REVISIONS				
REV	DATE	DRW'N	CHCK'D	DESCRIPTION
A	20JUN16	GFC	--	INITIAL RELEASE
B	22JUN16	GFC	JW/DM	DESIGN CHANGE
C	12JUL16	GFC	JW	DESIGN CHANGE
D	2SEP16	GFC	DM	DESIGN CHANGE



**NOTES**  
 1 SLIP FIT WITH 872-LM4015

UNLESS OTHERWISE NOTED DIMENSIONS ARE IN INCHES & TOLERANCES ARE AS FOLLOWS  
 X.X: ±0.1000" X.XX: ±0.0100"  
 X.XXX: ±0.0050" X.XXXX: ±0.0001"  
 ANGLES: ±0.5° FINISH: 125 MICRO INCHES  
 BREAK ALL SHARP EDGES & CORNERS .002" MAX

MATERIAL: 304 SST FINISH: 64



DRAWN	CABAK	--	KECK 1 DEPLOYABLE TERTIARY MIRROR
CHECKED	--	--	MIRROR ASSEMBLY
DESIGNED	CABAK	--	TITLE
DRAWN	CABAK	--	AXIAL ROD SLEEVE
SW DOCUMENT FILE	872-LM4019 Axial Rod Sleeve		PROJECT CODE
			K1D3FD
			DWG NO
			872-LM4021
			872-LM4019
			D
			1/1