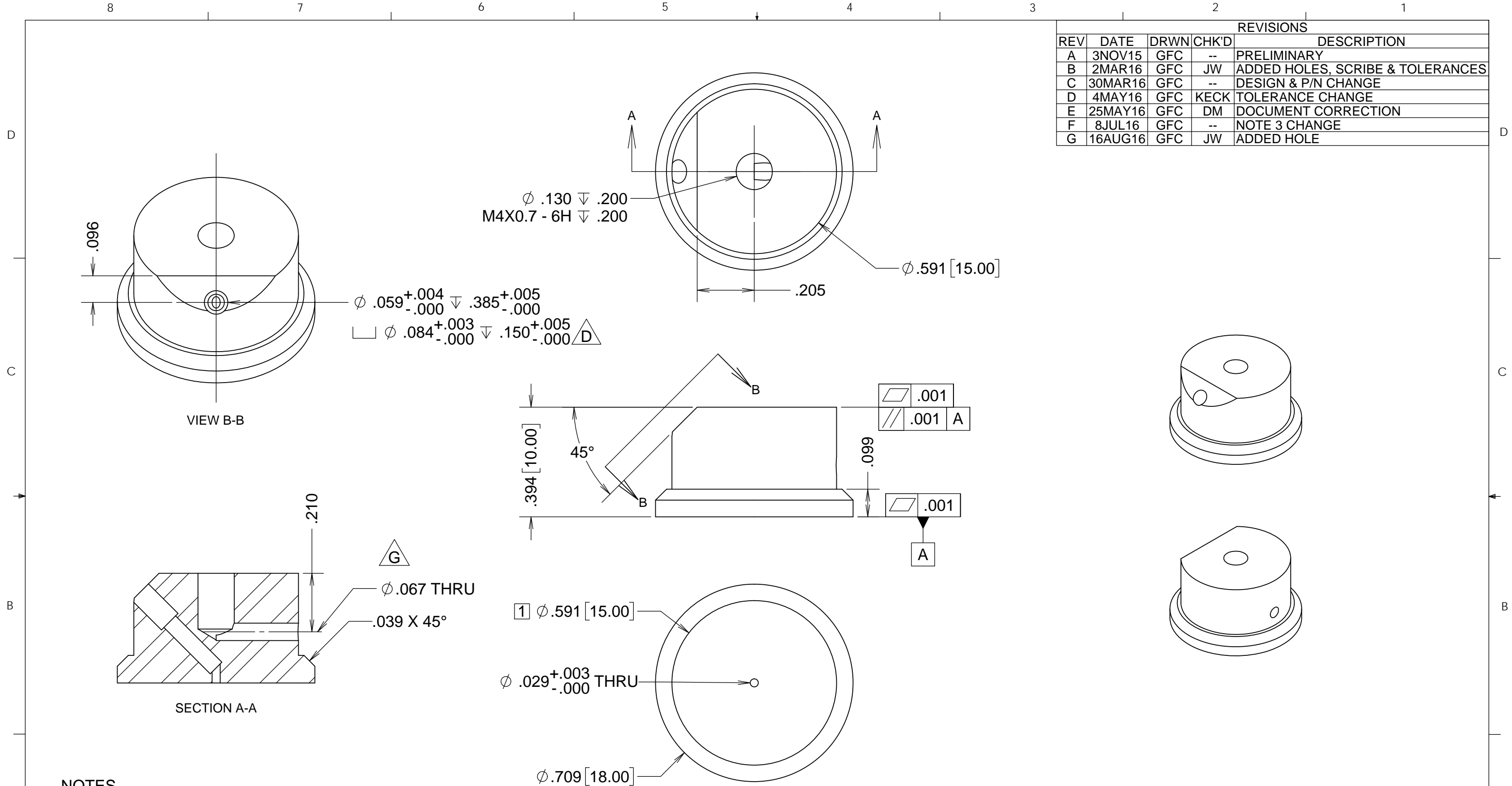


REVISIONS				
REV	DATE	DRWN	CHK'D	DESCRIPTION
A	3NOV15	GFC	--	PRELIMINARY
B	2MAR16	GFC	JW	ADDED HOLES, SCRIBE & TOLERANCES
C	30MAR16	GFC	--	DESIGN & P/N CHANGE
D	4MAY16	GFC	KECK	TOLERANCE CHANGE
E	25MAY16	GFC	DM	DOCUMENT CORRECTION
F	8JUL16	GFC	--	NOTE 3 CHANGE
G	16AUG16	GFC	JW	ADDED HOLE



NOTES

- 1 SCRIBE OR MARK 15 MM DIAMETER
- 2 ROUGH MACHINE, HEAT TREAT PER NOTE 3, THEN FINISH MACHINE
- 3 HEAT TREAT PER FOLLOWING SCHEDULE
 - 3.1 1/2 HOUR AT 843C IN VACUUM OR INERT GAS, GAS QUENCH
 - 3.2 1 HOUR AT 316C, AIR COOL
 - 3.3 48 HOURS AT 93C, AIR COOL
- 4 REMOVE BURRS & SHARP EDGES. **DO NOT CHAMFER EDGE OF $\phi .029$ HOLE**

UNLESS OTHERWISE NOTED DIMENSIONS ARE IN INCHES & TOLERANCES ARE AS FOLLOWS X.X: $\pm 0.1000''$ X.XX: $\pm 0.0100''$ X.XXX: $\pm 0.0050''$ X.XXXX: $\pm 0.0001''$ ANGLES: $\pm 0.5^\circ$ FINISH: 125 MICRO INCHES BREAK ALL SHARP EDGES & CORNERS .002" MAX			DRAWN	CABAK	KECK 1 DEPLOYABLE TERTIARY MIRROR MIRROR ASSEMBLY		
MATERIAL	FINISH		DESIGNED		TITLE	AXIAL PUCK	
INVAR-36	--	ENGINEER		PROJECT CODE	K1D3FD	DWG NO	872-LM-4011
		SW DOCUMENT FILE	QUANTITY	NEXT ASSY	872-LM4100/8310	REV	G 1/1