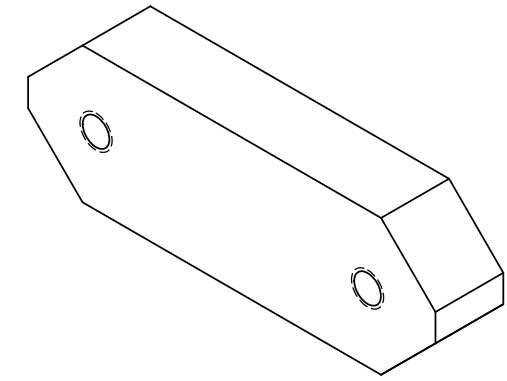
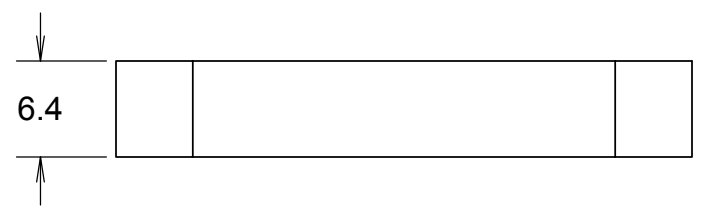
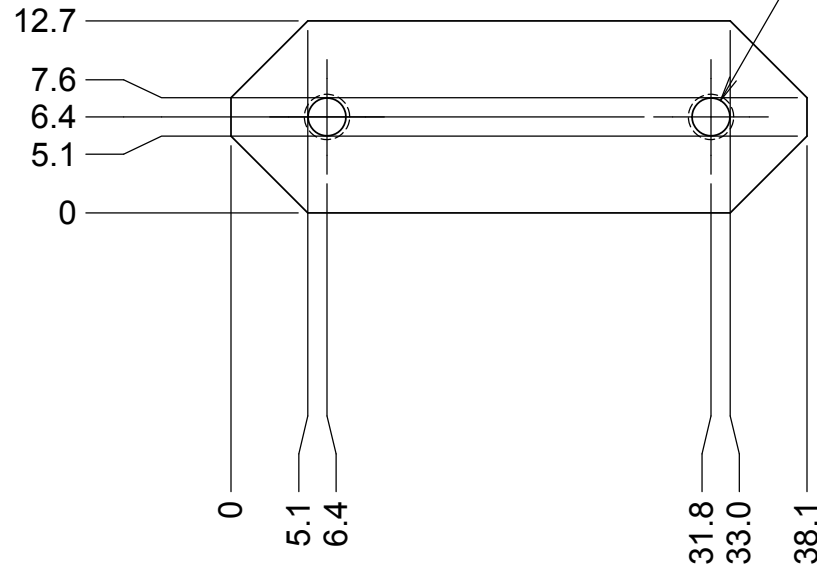


REVISIONS				
DRWN	DATE	CHK'D	REV	DESCRIPTION
CR	15NOV17		A	PRELIMINARY RELEASE



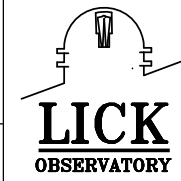
2X ϕ 2.5 THRU ALL
M3X0.5 - 6H THRU ALL



NOTES

- 1 CAD MODEL FILENAME, 872-LM3186 Snap Switch Nut Plate
- 2 MATERIAL: 6061 T6 ALUMINUM
3. BREAK ALL SHARP EDGES

UNLESS OTHERWISE NOTED DIMENSIONS ARE IN MILLIMETERS & TOLERANCES ARE AS FOLLOWS:
 X.X: ± 0.10 mm X.XX: ± 0.05 mm
 ANGLES: $\pm 0.5^\circ$ FINISH: 3 MICRONS (μ m)
 BREAK ALL SHARP EDGES & CORNERS .25mm MAX



<small>DRAWN</small> C. RATLIFF <small>CHECKED</small> DM	<small>QUANTITY</small> TBD	<small>PROJECT CODE</small> K1D3FD		<small>DWG NO</small> 872-LM3186	<small>REV</small> A
<small>DESIGNED</small> C. RATLIFF <small>ENGINEER</small>	<small>NA</small>	<small>TITLE</small> SNAP SWITCH NUT PLATE		<small>872-LM0000</small>	<small>1</small>
<small>MATERIAL</small> SEE NOTES	<small>FINISH</small>	<small>SW DOCUMENT FILE</small> 872-LM3186 SNAP SWITCH NUT PLATE	<small>QUANTITY</small> 2	<small>PROJECT CODE</small> K1D3FD <small>NEXT ASSY</small> 872-LM0000	<small>REV</small> A