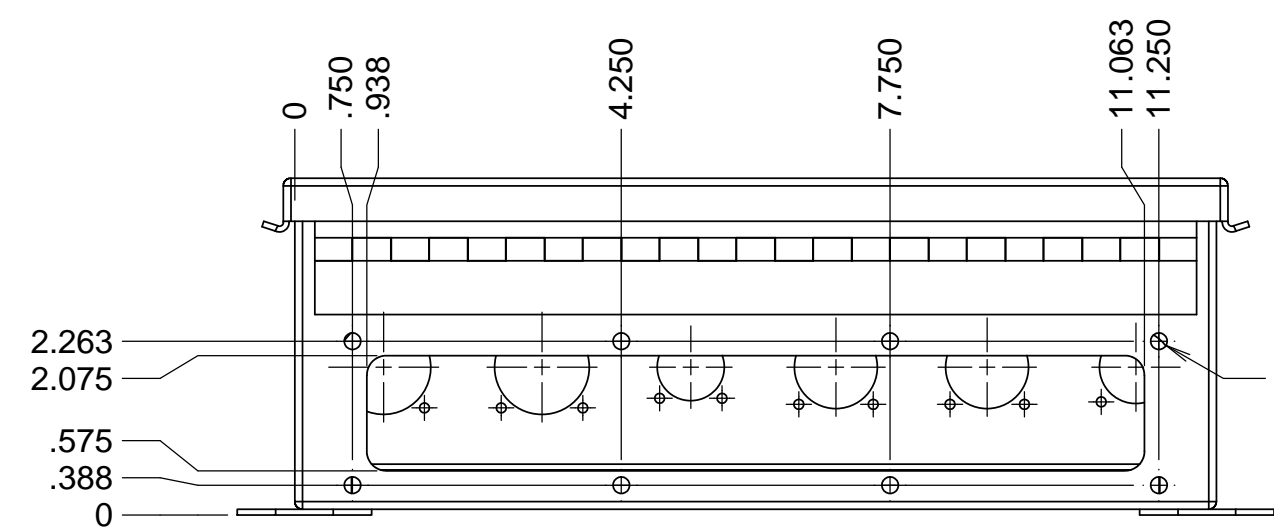
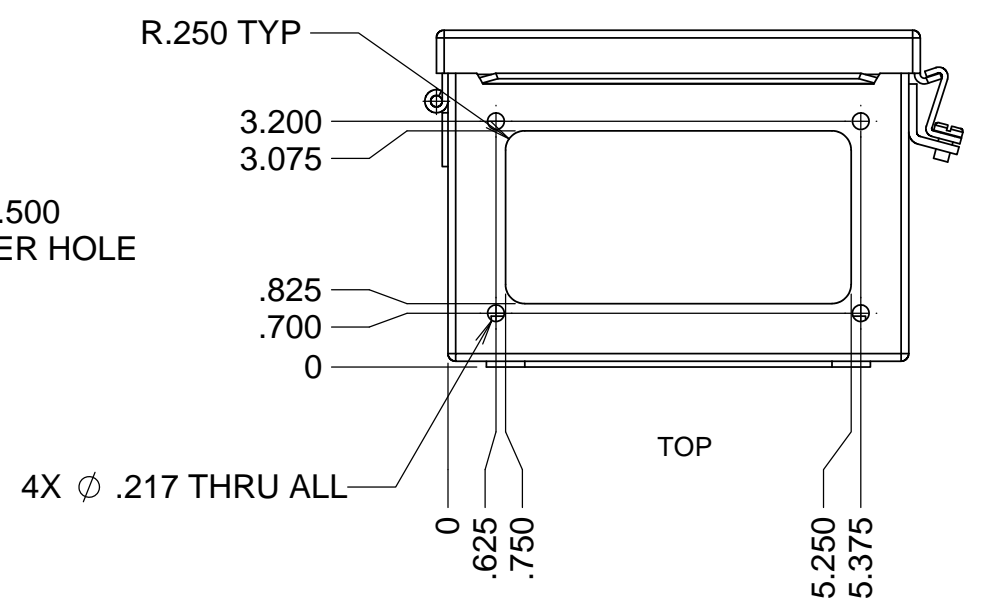


REVISIONS				
REV	DATE	DRW'N	CHCK'D	DESCRIPTION
A	9/11/2017	CR		INITIAL RELEASE

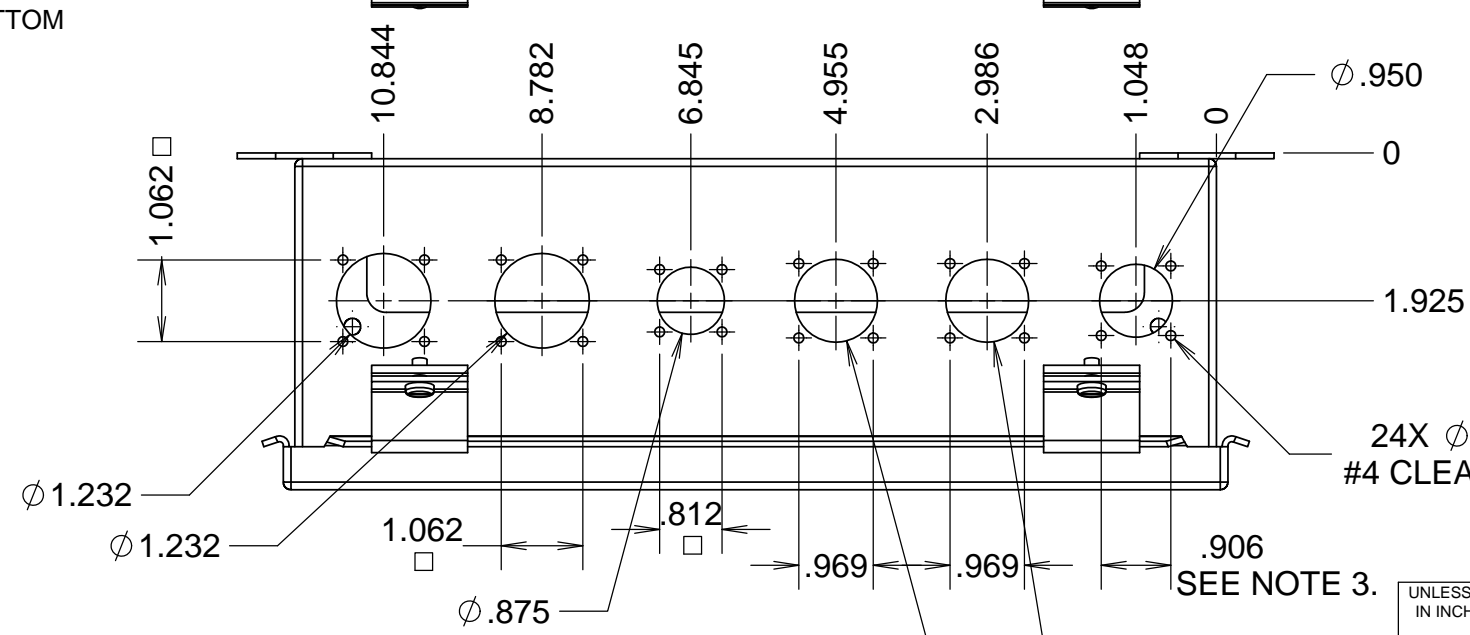
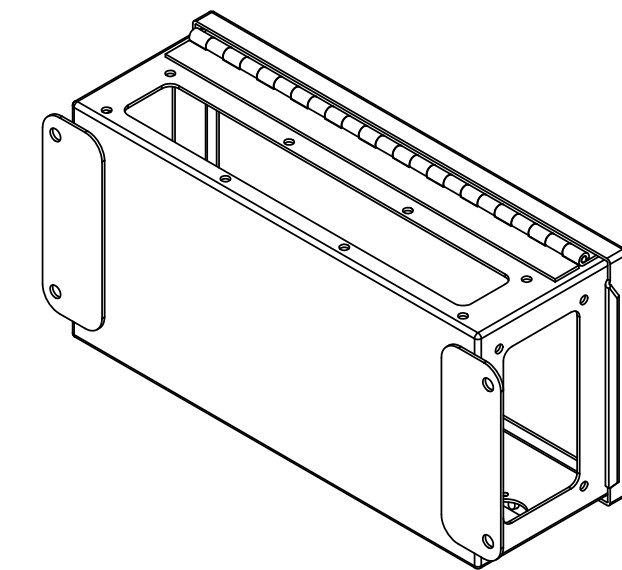
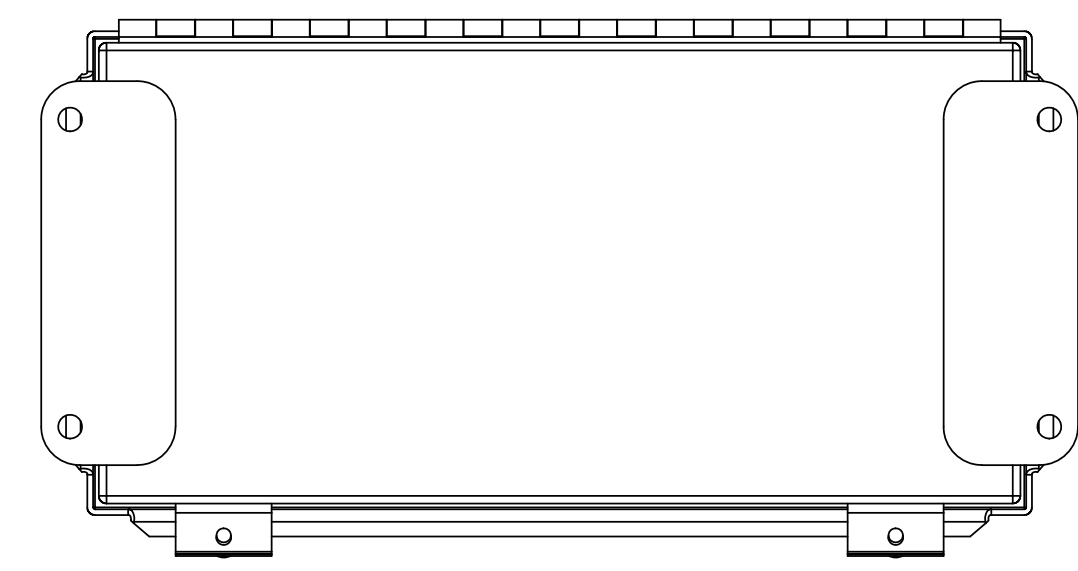
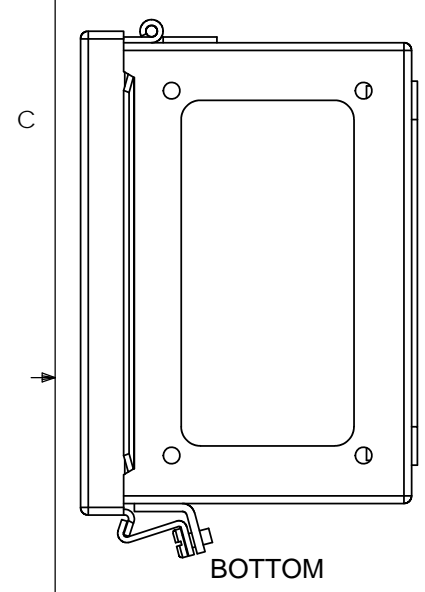


8X ϕ .217 ∇ .500
 ϕ 5.5 (5.5) DIAMETER HOLE



4X ϕ .217 THRU ALL

SAME CUTOUT AND HOLE PATTERN TOP AND BOTTOM



24X ϕ .129 ∇ .500
 #4 CLEARANCE HOLE

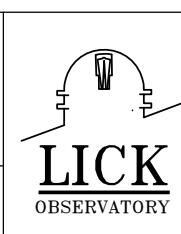
SEE NOTE 3.

NOTES

- 1 CAD MODEL FILENAME, 872-LM3180 MODIFIED STEEL ENCLOSURE
- 2 USE MCMaster CARR PART NUMBER 7605K28
- 3. ALL #4 CLEARANCE HOLES ARE A SQUARE HOLE PATTERN

UNLESS OTHERWISE NOTED DIMENSIONS ARE IN INCHES & TOLERANCES ARE AS FOLLOWS

X.X: $\pm 0.1000"$	X.XX: $\pm 0.0100"$
X.XXX: $\pm 0.0050"$	X.XXXX: $\pm 0.0001"$
ANGLES: $\pm 0.5^\circ$ FINISH: 125 MICRO INCHES BREAK ALL SHARP EDGES & CORNERS .002" MAX	
MATERIAL USE MC 7605K28	FINISH NA



DRAWN CR	DESIGNED CR	ENGINEER RATLIFF	PROJECT CODE K1D3FD	DWG NO 872-LM3180	TITLE MODIFIED STEEL ENCLOSURE
CHECKED --	DESIGNED --	ENGINEER --	PROJECT CODE K1D3FD	DWG NO 872-LM3180	TITLE MODIFIED STEEL ENCLOSURE
SW DOCUMENT FILE 1	PROJECT CODE K1D3FD	DWG NO 872-LM3180	A 1/1		