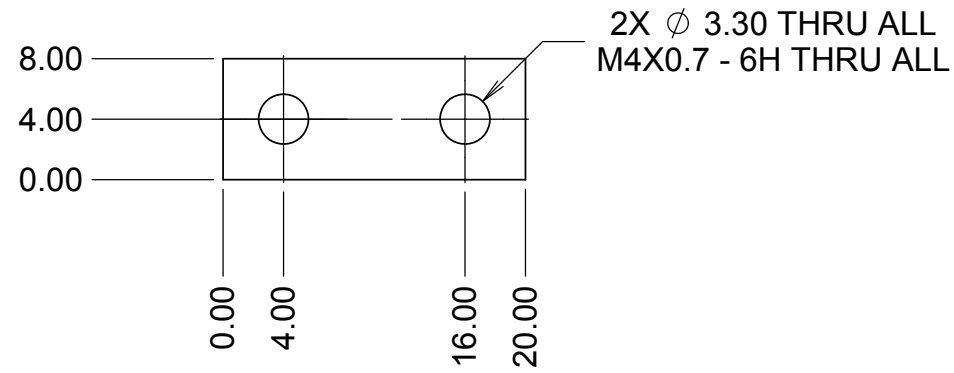
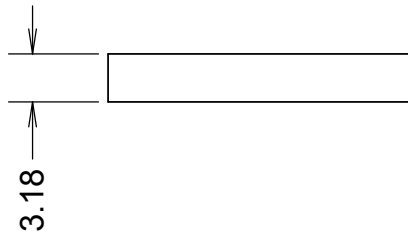
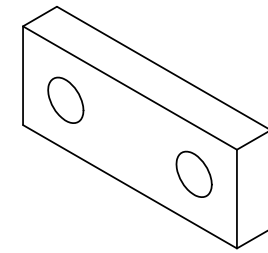


REVISIONS				
REV	DATE	DRW'N	CHCK'D	DESCRIPTION
A	21MAR17	CR	--	INITIAL RELEASE



**NOTES**

- 1 CAD MODEL FILENAME, 872-LM3146 Renishaw nut plate
- 2. MATERIAL: 300 SERIES STAINLESS (OR HARDER STAINLESS)

UNLESS OTHERWISE NOTED DIMENSIONS ARE IN MILLIMETERS & TOLERANCES ARE AS FOLLOWS: X.X: ±0.10 mm X.XX: ±0.04 mm ANGLES: ±0.1° FINISH: 3 MICRONS (µm) BREAK ALL SHARP EDGES & CORNERS .25mm MAX			DRAWN <b>RATLIFF</b>	--	KECK 1 DEPLOYABLE TERTIARY MIRROR	
NOTE 2			FINISH NA	CHECKED <b>JW</b>	--	OUTER DRUM
			DESIGNED <b>CR</b>	--	TITLE RENISHAW NUT PLATE	
			ENGINEER <b>RATLIFF</b>	--	QUANTITY <b>1</b>	PROJECT CODE K1D3FD
			SW DOCUMENT FILE 872-LM3146.SLDPRT		NEXT ASSY --	DWG NO <b>872-LM3146</b>
						REV <b>A</b>
						1/1