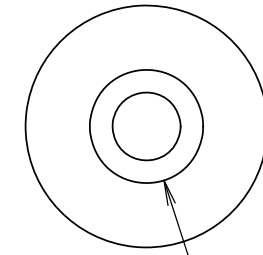
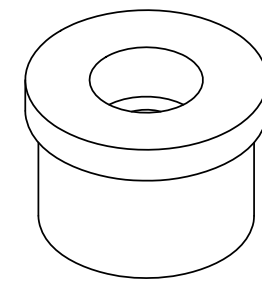
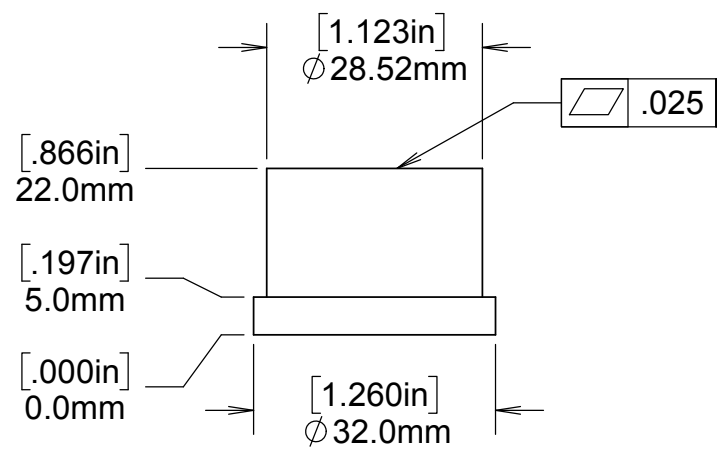


| REVISIONS | | | | |
|-----------|---------|-------|-----|---------------------|
| DRWN | DATE | CHK'D | REV | DESCRIPTION |
| CR | 24SEP15 | | A | PRELIMINARY RELEASE |
| CR | 4/13/17 | | B | ENLARGED SCREW HOLE |



$\phi 9.00\text{mm}$ [0.354in] THRU
 $\phi 15.00\text{mm}$ [0.591in] $\nabla 8.0\text{mm}$ [0.315in]
 CBORE FOR M8 SHCS

NOTES:
 1. MATERIAL: 300 SERIES STAINLESS STEEL

| | | | | | | |
|---|--|--|--------------------------------|------------------|-----------------------------------|----------------------|
| UNLESS OTHERWISE NOTED DIMENSIONS ARE IN MILLIMETERS & TOLERANCES ARE AS FOLLOWS: X.X: $\pm 0.10\text{ mm}$ X.XX: $\pm 0.01\text{ mm}$ ANGLES: $\pm 0.5^\circ$ FINISH: 3 MICRONS (μm) BREAK ALL SHARP EDGES & CORNERS .25mm MAX | | | DRAWN C. RATLIFF | | KECK 1 DEPLOYABLE TERTIARY MIRROR | |
| SEE NOTES | | | CHECKED J. WARD | TBD | K1DM3 STATOR | |
| | | | DESIGNED C. RATLIFF | 9/24/15 | TITLE BEARING AXLE, ANTI-TIP | |
| | | | ENGINEER | | PROJECT CODE K1D3DD | DWG NO 872-LM3123 |
| | | | SW DOCUMENT FILE 872-LM3123 | QUANTITY 2 EA | NEXT ASSY KDM3100 | REV B 1 |