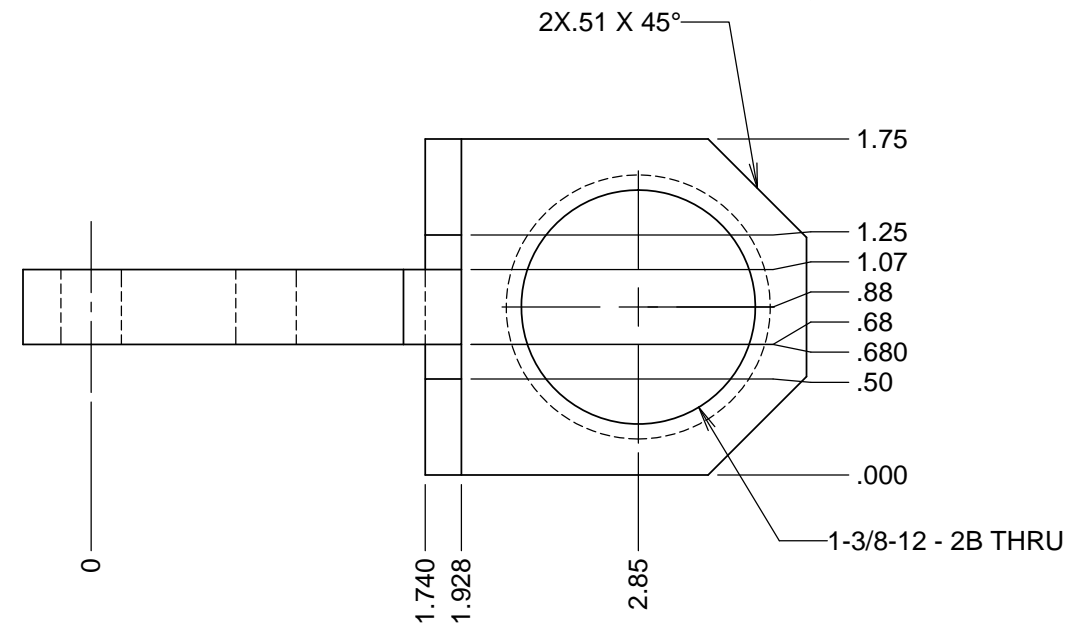
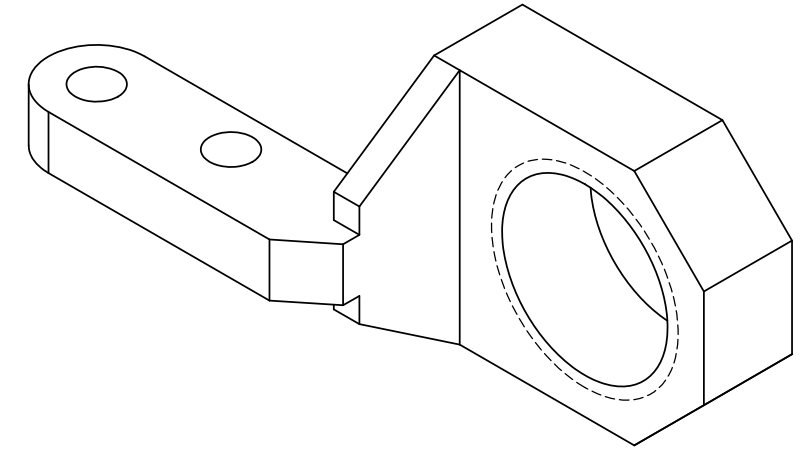
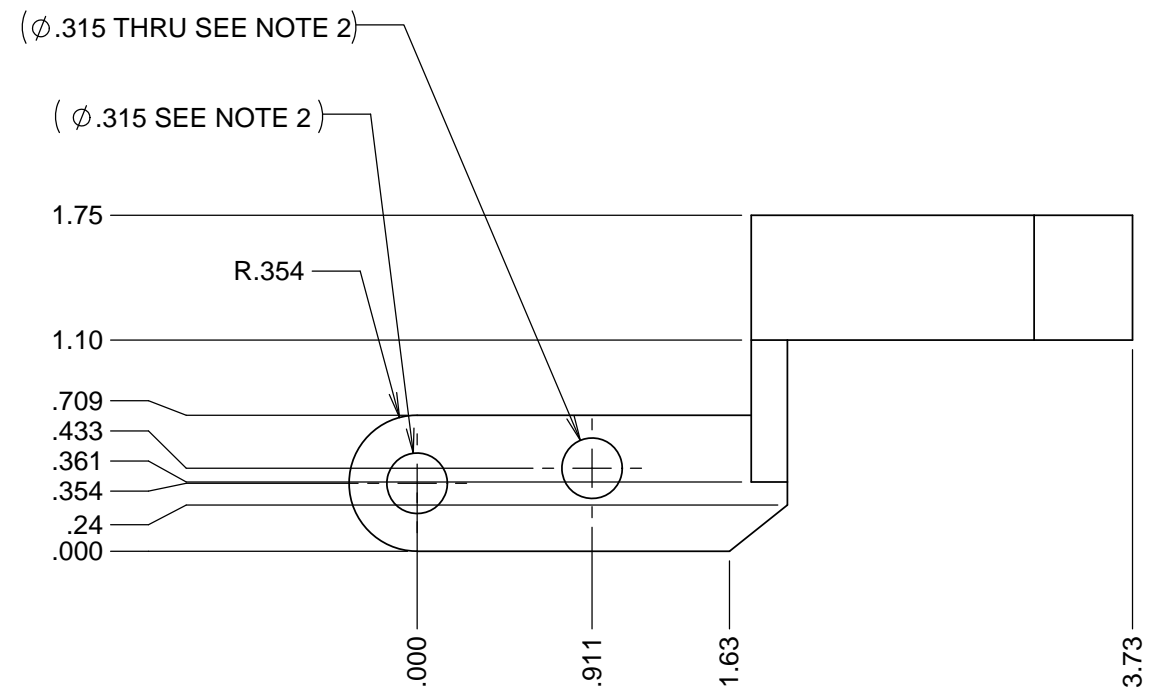


REVISIONS				
REV	DATE	DRWN	CHK'D	DESCRIPTION
A	2/2/2017	CR		INITIAL RELEASE



- NOTES**
- MATERIAL: 300 SERIES STAINLESS STEEL OR 17-4PH
  - HOLE DIAMETERS HERE SHOULD MATCH THAT OF THE STOCK PART, NEEDS TO BE MEASURED, HOLE LOCATIONS SHOULD ALSO MATCH THE STOCK PART, PLEASE CHECK

UNLESS OTHERWISE NOTED DIMENSIONS ARE IN INCHES & TOLERANCES ARE AS FOLLOWS  
 X.X:  $\pm 0.1000''$  X.XX:  $\pm 0.0100''$   
 X.XXX:  $\pm 0.0050''$  X.XXXX:  $\pm 0.0001''$   
 ANGLES:  $\pm 0.5^\circ$  FINISH: 125 MICRO INCHES  
 BREAK ALL SHARP EDGES & CORNERS .002" MAX

MATERIAL: SEE NOTE 1  
 FINISH: NA



DRAWN	RATLIFF	--	KECK 1 DEPLOYABLE TERTIARY MIRROR
CHECKED	J. WARD	2/2/2017	ROTARY STRUCTURE
DESIGNED	--	--	TITLE
ENGINEER	--	--	DIE SPRING CLAMP SWING ARM
SW DOCUMENT FILE	QUANTITY	PROJECT CODE	DWG NO
	2	--	872-LM2241
		NEXT ASSY	RE
		872-LM2242	A 1/1