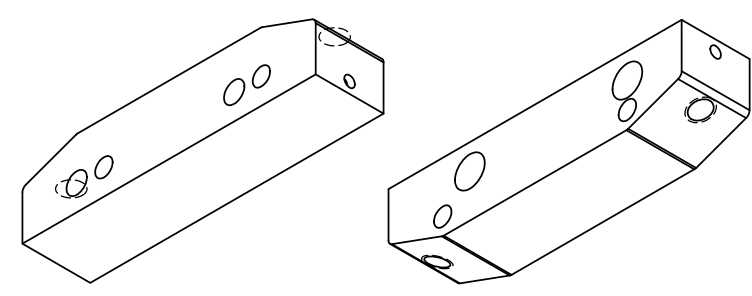
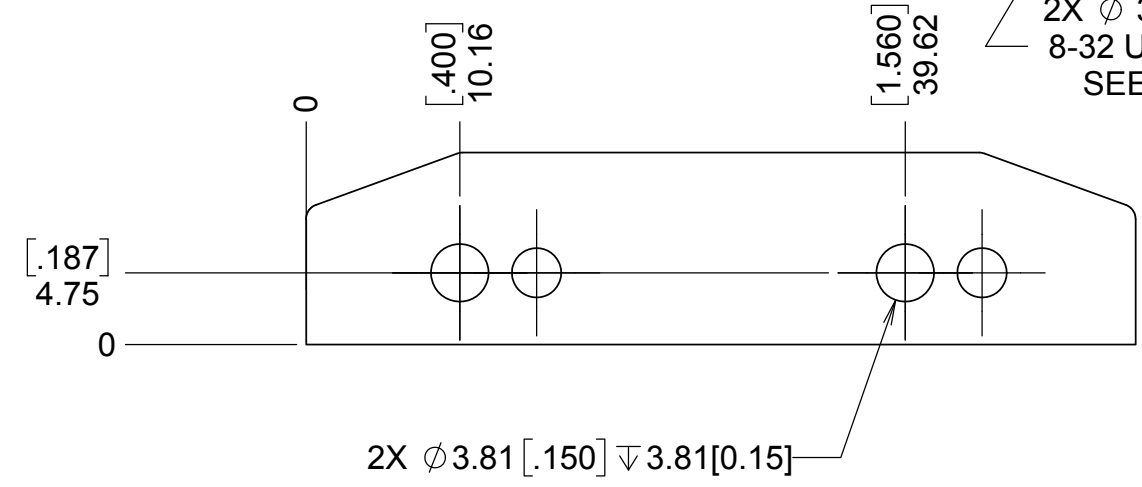
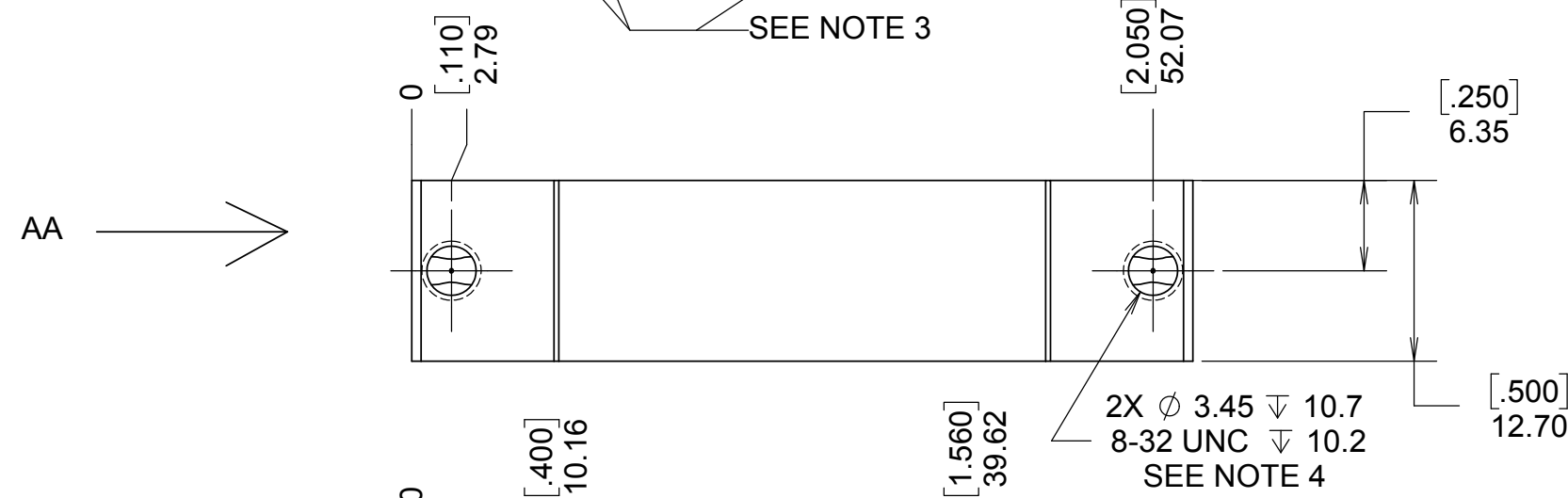
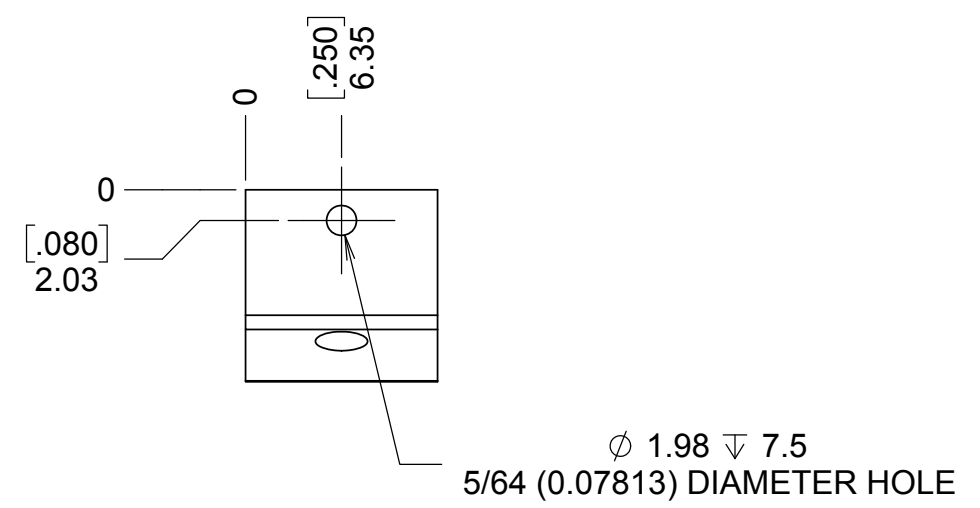
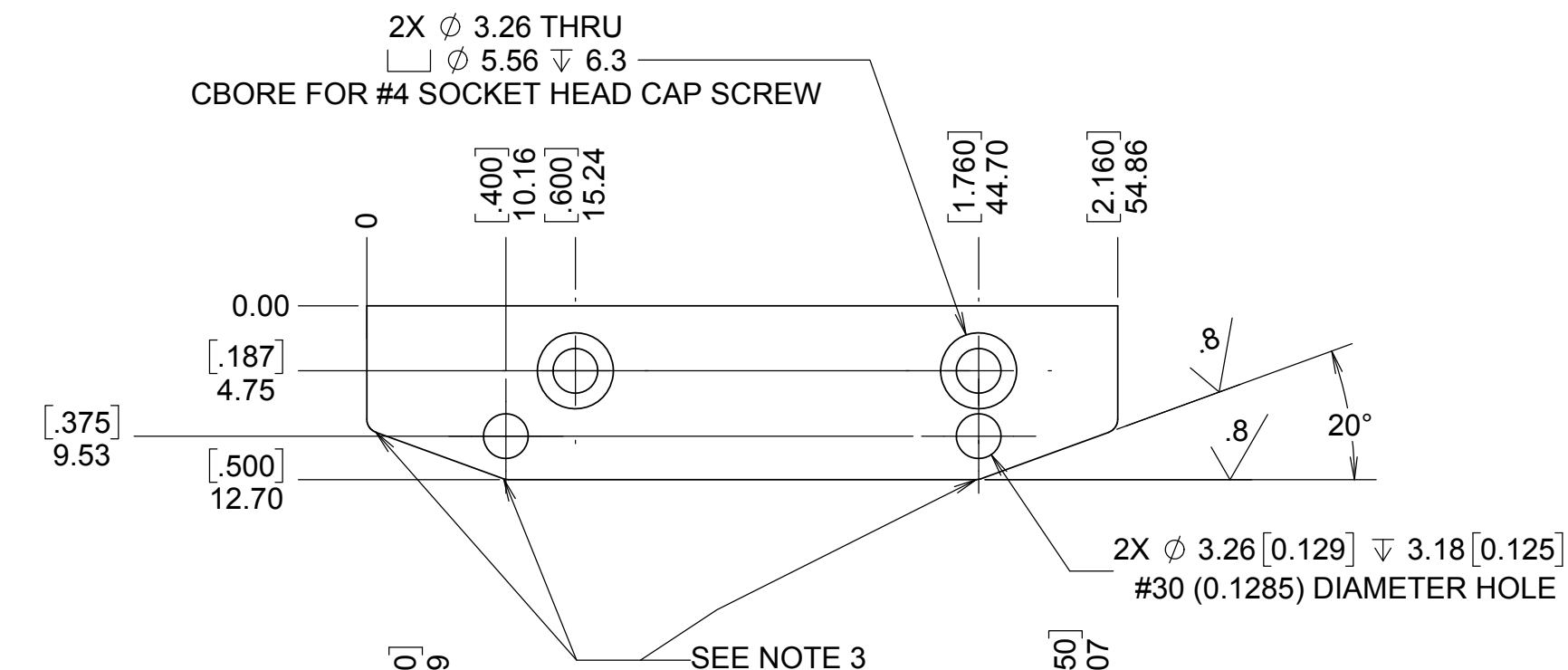


REVISIONS				
DRWN	DATE	CHK'D	REV	DESCRIPTION
CR	7OCT16		A	PRELIMINARY RELEASE



- NOTES:
- MATERIAL: COPPER WITH SILVER COATING
 - LAY SHOULD BE PARALLEL TO BRUSH RELATIVE MOTION, ALONG ARROW AA
 - RADII MADE FROM BUFFING WHEEL ACCEPTABLE AT ANY OF THE CORNERS SHOWN, 0.5 TO 3MM OK
 - ENSURE NO BURRS OR SHARP EDGES ON RAMPED SURFACE OF 8-32 TAPPED HOLE

UNLESS OTHERWISE NOTED DIMENSIONS ARE IN MILLIMETERS & TOLERANCES ARE AS FOLLOWS: X.X: \pm 0.10 mm X.XX: \pm 0.01 mm ANGLES: \pm 0.5° FINISH: 3 MICRONS (μ m) BREAK ALL SHARP EDGES & CORNERS .25mm MAX			DRAWN C. RATLIFF	KECK 1 DEPLOYABLE TERTIARY MIRROR	
MATERIAL SEE NOTE 1	FINISH SEE NOTE 2		CHECKED J. WARD	ROTARY SUPPORT STRUCTURE	
			DESIGNED JW&CR	10/7/16	TITLE INNER DRUM CONTACT, 48V, SILVER COATED COPPER
			ENGINEER C. RATLIFF	10/7/16	PROJECT CODE K1D3FD
			SW DOCUMENT FILE 872-LM2225.SLDPRT	QUANTITY TBD	DWG NO 872-LM2225
				NEXT ASSY KDM2223	REV A 1/1