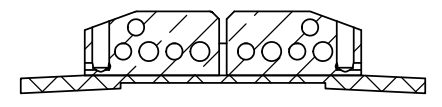
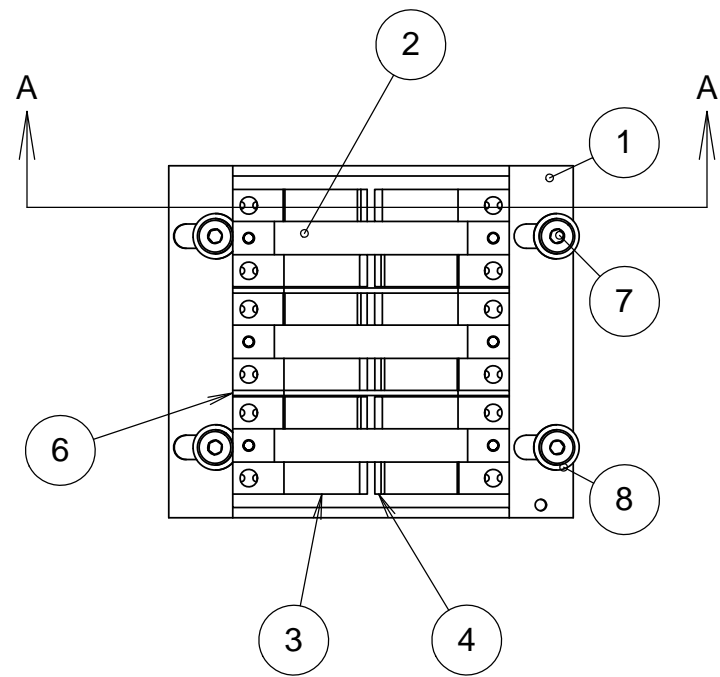
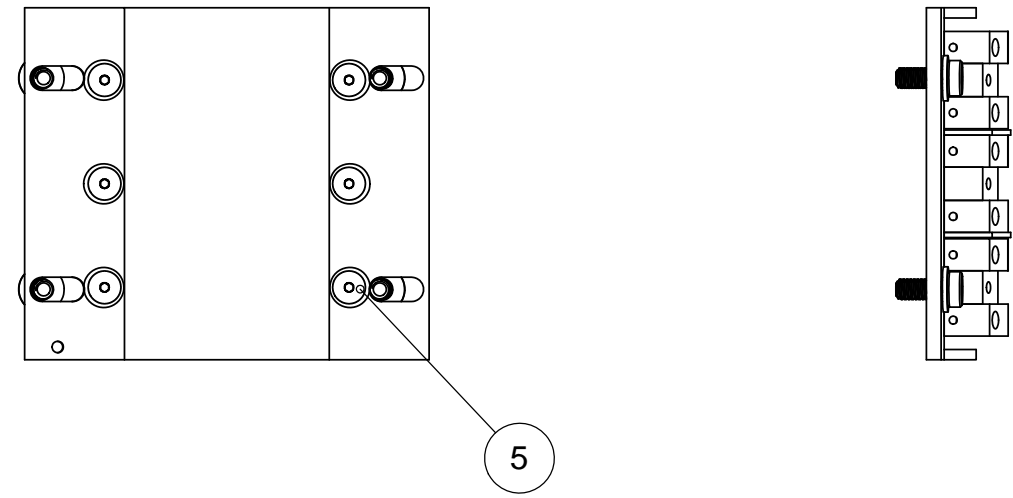
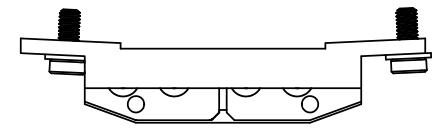


REVISIONS				
REV	DATE	DRW'N	CHCK'D	DESCRIPTION
A	13SEP16	CR	--	INITIAL RELEASE

ITEM NO.	PartNo	DESCRIPTION	QTY.
1	872-LM2210	Delrin backing plate low voltage	1
2	872-LM-2212	Delrin low voltage separator	3
3	872-LM-2219	Low Voltage Contact Left	6
4	872-LM-2220	Low Voltage Contact, Right	6
5	MC 92210A108	FLAT HEAD SOCKET SCREW	6
6	872-LM-2221	Mylar Insulator	2
7	MC_90666A114	LOW PROFILE M4x10mm SHCS	4
8	MC_90965A150	flat washer_m4_4.3x9x.9	4



SECTION A-A

NOTES

- INITIAL QUANTITY: 1 OR 2 FOR FIRST PROTOTYPE TESTS, QUANTITY FOR FULL SCALE K1DM3: 10
- ENSURE COUNTERSUNK SCREWS ARE RECESSED WITHIN DELRIN MOUNT SURFACES

UNLESS OTHERWISE NOTED DIMENSIONS ARE IN INCHES & TOLERANCES ARE AS FOLLOWS X.X: ±0.1000" X.XX: ±0.0100" X.XXX: ±0.0050" X.XXXX: ±0.0001" ANGLES: ±0.5° FINISH: 125 MICRO INCHES BREAK ALL SHARP EDGES & CORNERS .002" MAX			DRAWN: C.RATLIFF --	PROJECT CODE: K1D3FD	DWG NO: 872-LM-2218	A/1
PARTS LIST NA			CHECKED: J WARD --	TITLE: LOW VOLTAGE BRUSH ASSEMBLY	NEXT ASSY: --	
			DESIGNED: CR&JW --			
			ENGINEER: --			
			SW DOCUMENT FILE			