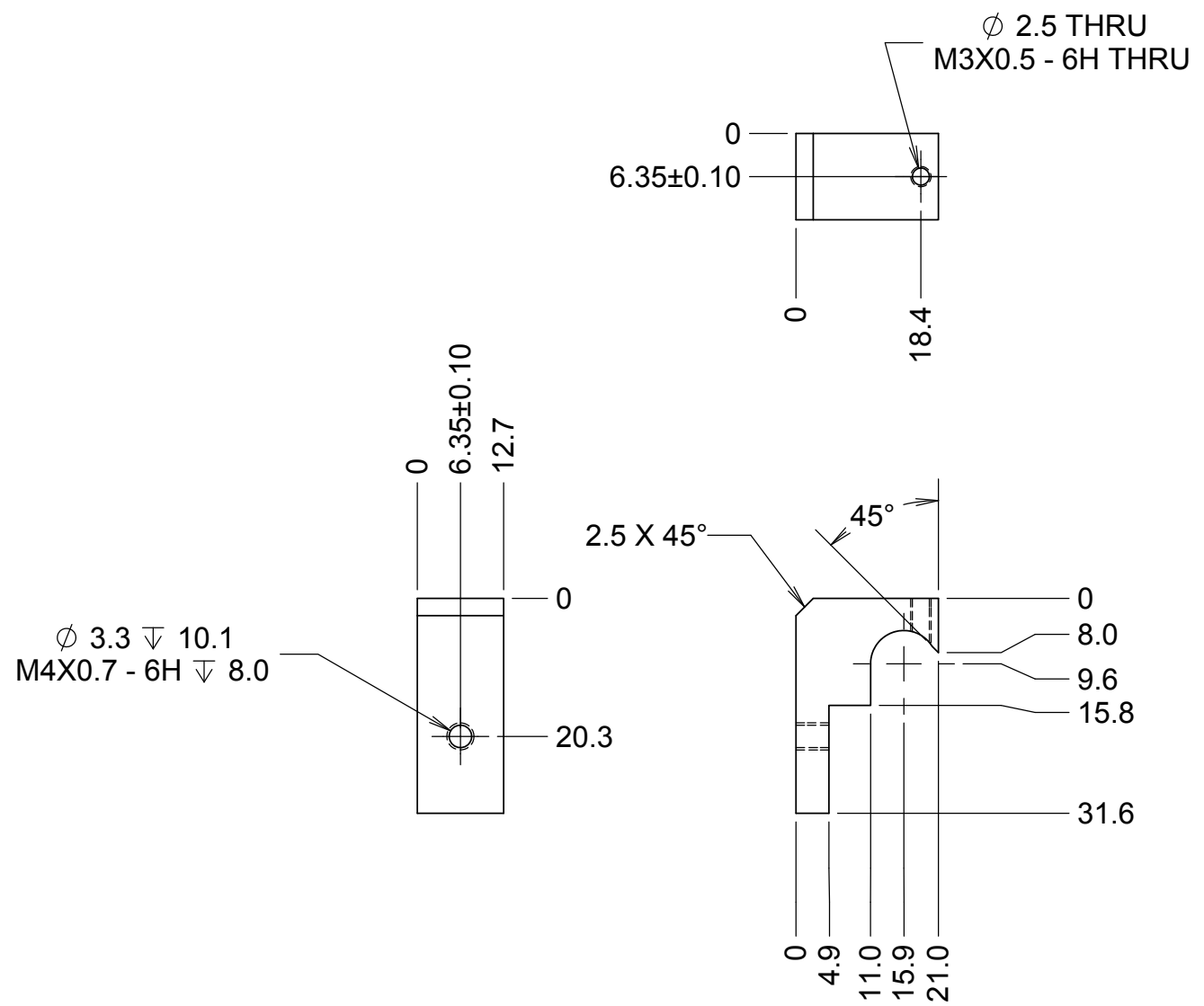


REVISIONS				
DRWN	DATE	CHK'D	REV	DESCRIPTION
CR	2/23/17		A	INITIAL RELEASE



NOTES

- 6061 T6 ALUMINUM
- BLACK ANODIZE

UNLESS OTHERWISE NOTED DIMENSIONS ARE IN MILLIMETERS & TOLERANCES ARE AS FOLLOWS: X.X: ± 0.10 mm X.XX: ± 0.01 mm ANGLES: $\pm 0.5^\circ$ FINISH: 3 MICRONS (μm) BREAK ALL SHARP EDGES & CORNERS .25mm MAX			DRAWN C. RATLIFF <small>CHECKED</small>	KECK 1 DEPLOYABLE TERTIARY MIRROR STOW & DEPLOY SYSTEMS	
MATERIAL SEE NOTE 1	FINISH SEE NOTE 2		DESIGNED C. RATLIFF <small>ENGINEER</small>	DATE 2/23/17	TITLE ENCODER PLATE MOUNTS
		SW DOCUMENT FILE 872-LM1307	QUANTITY 8	PROJECT CODE K1D3FD <small>NEXT ASSY 872-LM0000</small>	DWG NO 872-LM1307
				REV A	1/1