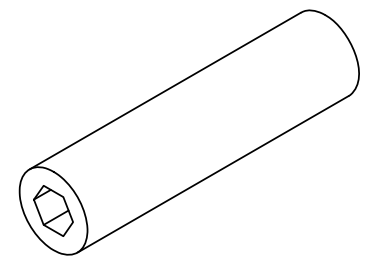
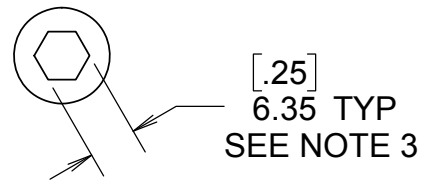
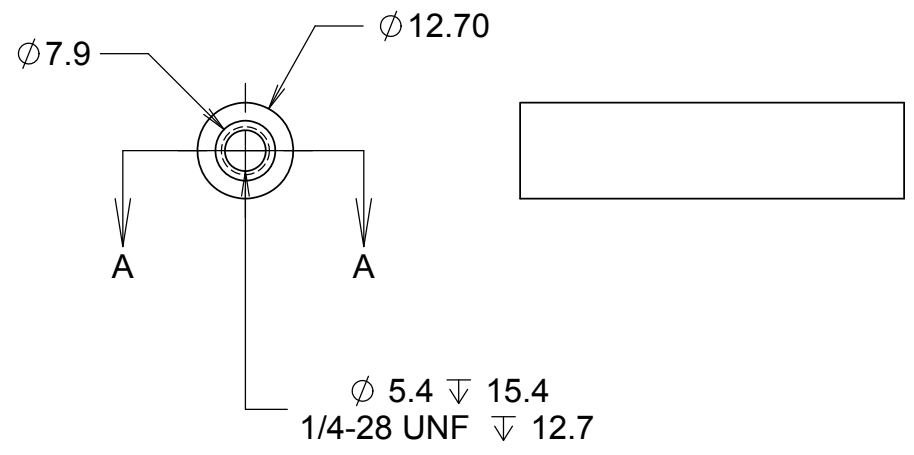
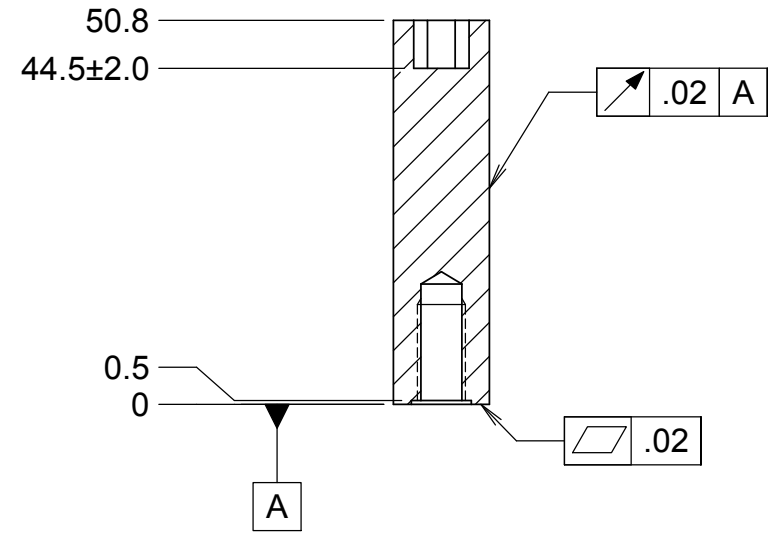


REVISIONS				
DRWN	DATE	CHK'D	REV	DESCRIPTION
CR	2/23/17		A	INITIAL RELEASE



- NOTES**
- 6061 T6 ALUMINUM
 - BLACK ANODIZE
 - SOCKET RECESS FOR 1/4 INCH ALLEN WRENCH

UNLESS OTHERWISE NOTED DIMENSIONS ARE IN MILLIMETERS & TOLERANCES ARE AS FOLLOWS: X.X: ±0.10 mm X.XX: ±0.01 mm			DRAWN C. RATLIFF CHECKED DM	KECK 1 DEPLOYABLE TERTIARY MIRROR STOW & DEPLOY SYSTEMS	
ANGLES: ±0.5° FINISH: 3 MICRONS (µm) BREAK ALL SHARP EDGES & CORNERS .25mm MAX			DESIGNED C. RATLIFF ENGINEER	2/23/17	TITLE SHAFT EXTENSION
MATERIAL SEE NOTE 1	FINISH SEE NOTE 2	SW DOCUMENT FILE 872-LM1305	QUANTITY 2	PROJECT CODE K1D3FD NEXT ASSY 872-LM0000	DWG NO 872-LM1305
				REV A 1/1	