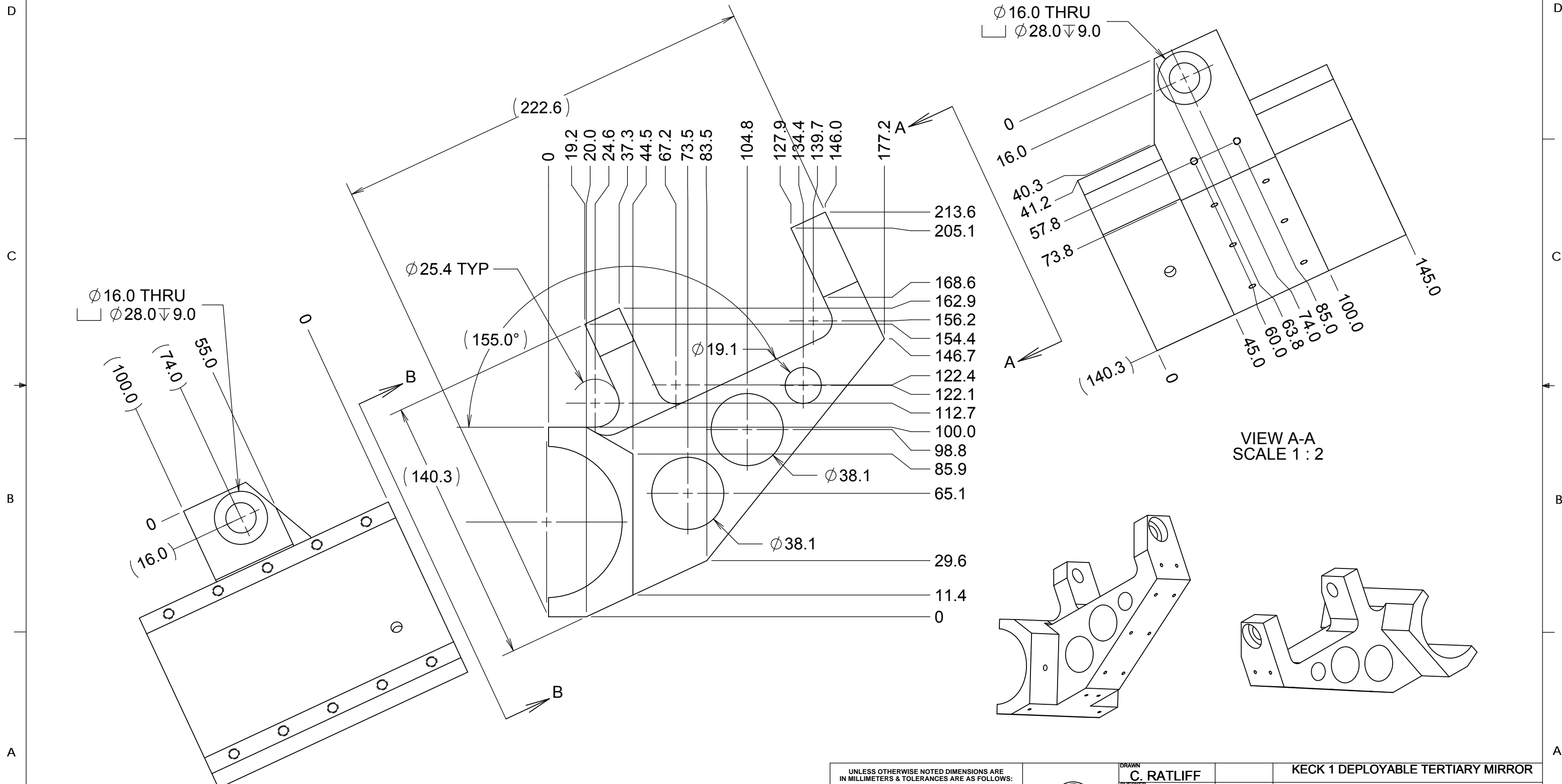


**NOTES**

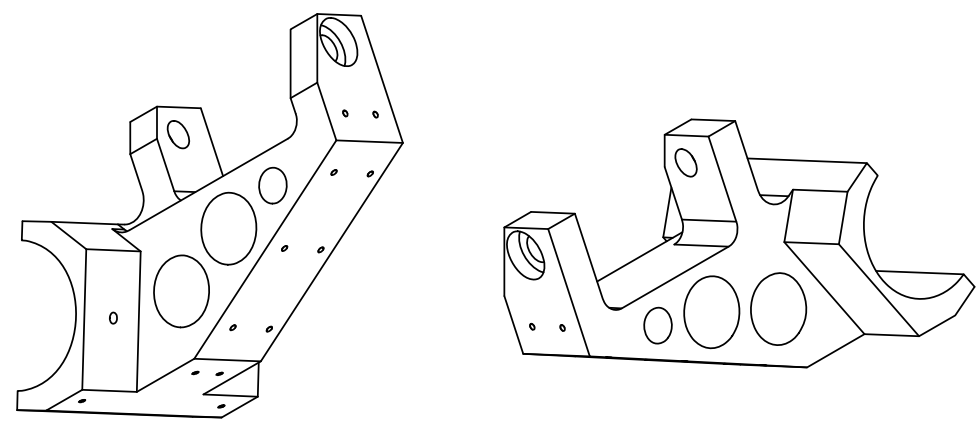
1. 7075 T6 ALUMINUM
2. M4 TAPPED HOLE POSITION TOLERANCE IS LOOSE +/-1MM -FOR WIRE TIE DOWNS
3. 16MM HOLES SHOULD LINE UP TO WITHIN 0.1MM
4. BLACK ANODIZE

REVISIONS				
DRWN	DATE	CHK'D	REV	DESCRIPTION
CR	7/14/16		A	INITIAL RELEASE
CR	11/3/16		B	ADDED HOLE CALLOUTS CHANGED TO 79.8MM

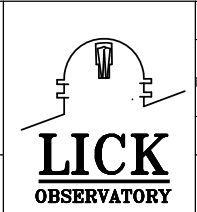


VIEW B-B  
SCALE 1 : 2

VIEW A-A  
SCALE 1 : 2



UNLESS OTHERWISE NOTED DIMENSIONS ARE IN MILLIMETERS & TOLERANCES ARE AS FOLLOWS:  
 X.X: ±0.10 mm X.XX: ±0.01 mm  
 ANGLES: ±0.5° FINISH: 3 MICRONS (µm)  
 BREAK ALL SHARP EDGES & CORNERS .25mm MAX



DRAWN  
**C. RATLIFF**  
 CHECKED  
**J. WARD**  
 DESIGNED  
**C. RATLIFF**  
 ENGINEER

PROJECT CODE  
**K1D3FD**  
 DWG NO  
**872-LM1301**  
 TITLE  
**872-LM1301 UPPER SWING ARM ATTACHMENT CLAMP B**

MATERIAL  
SEE NOTE 1  
 FINISH  
SEE NOTE 4

SW DOCUMENT FILE  
872-LM1301 UPPER SWING ARM ATTACHMENT CLAMP B.SLDPRT  
 QUANTITY  
**1**

REV  
**B**  
 1  
 2

