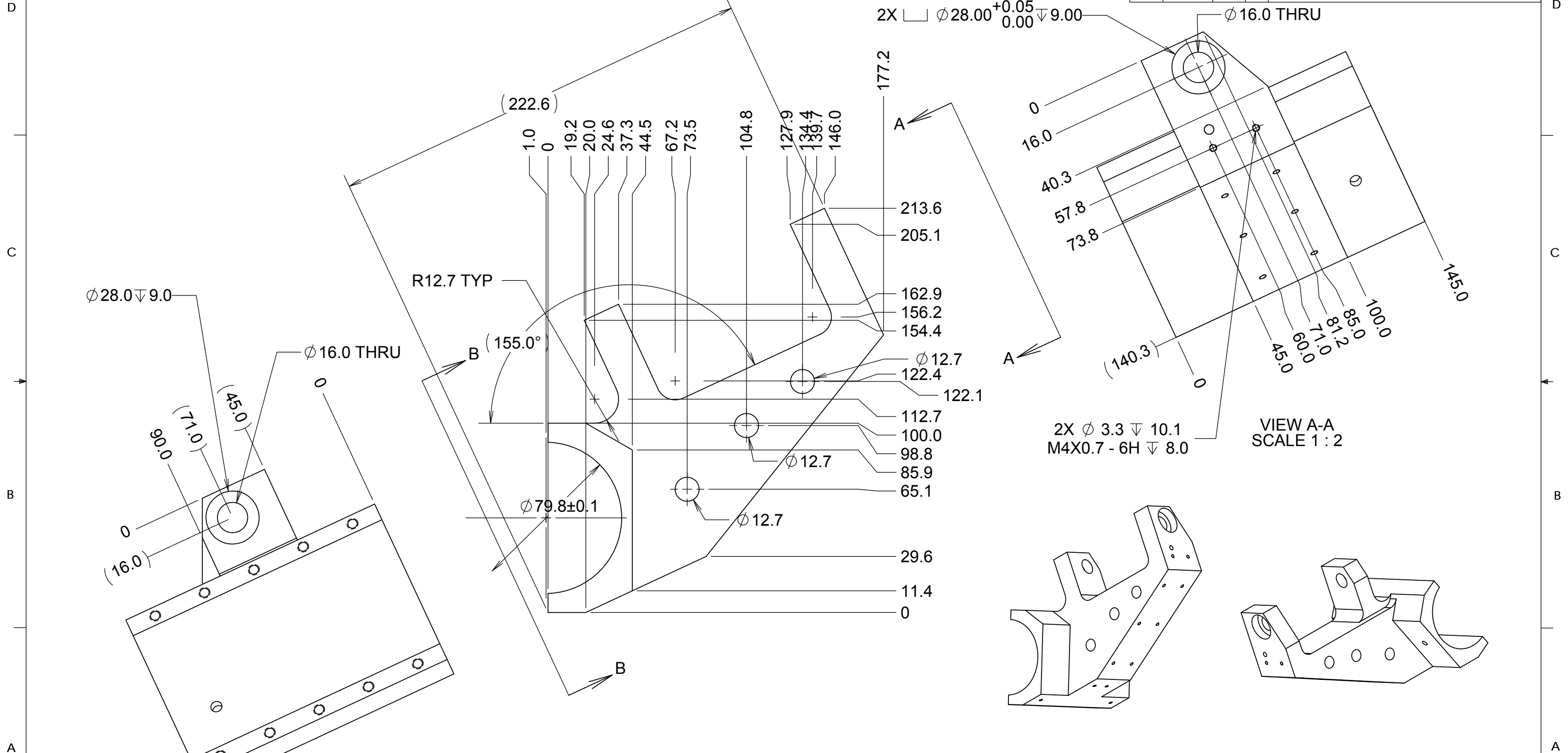


NOTES


1. 7075 T6 ALUMINUM
2. ALL M4 TAPPED HOLE POSITION TOLERANCE IS LOOSE +-1MM -FOR WIRE TIE DOWNS
3. 16MM HOLES SHOULD LINE UP TO WITHIN 0.1MM
4. BLACK ANODIZE

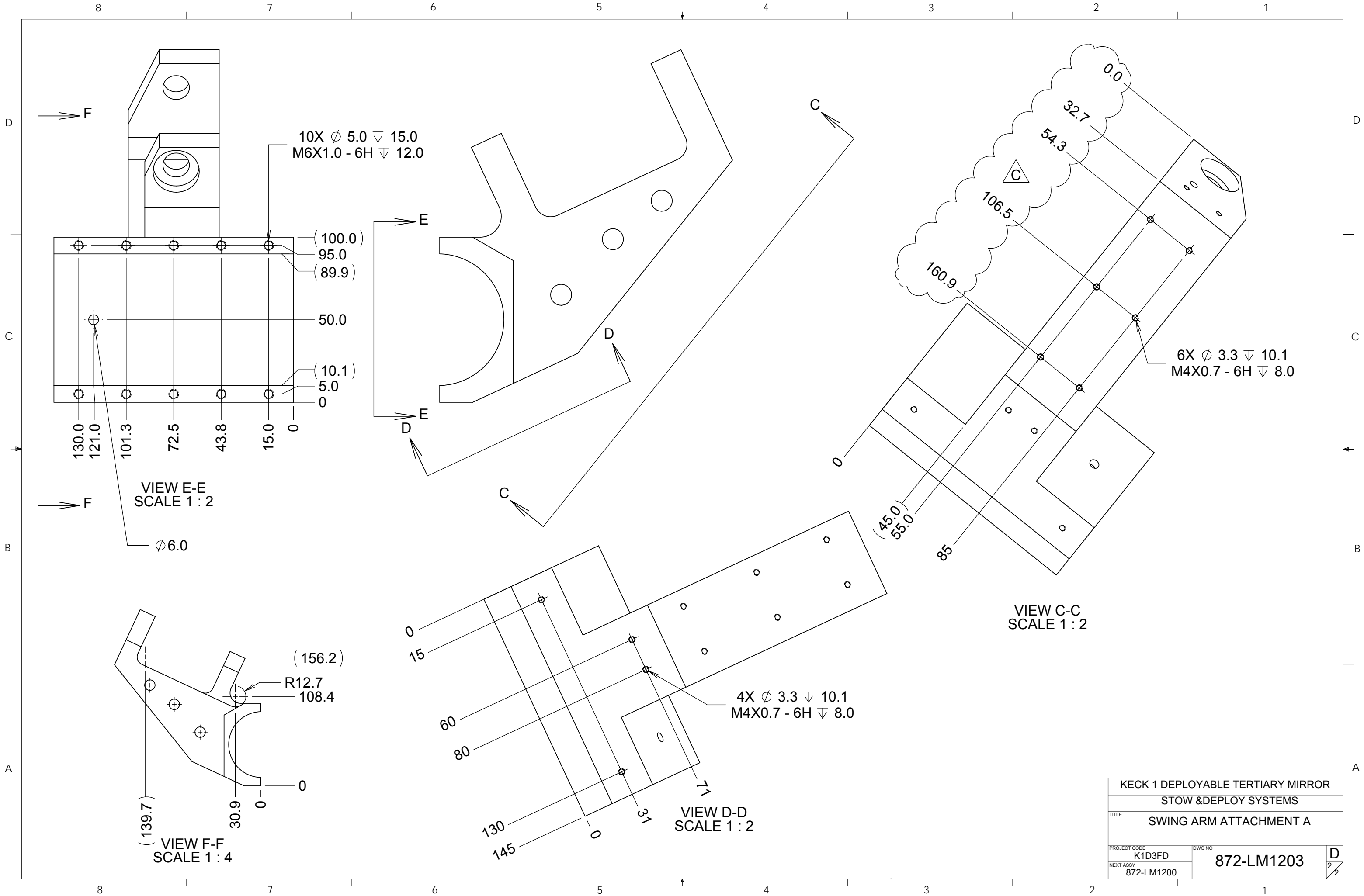
REVISIONS				
DRWN	DATE	CHKD	REV	DESCRIPTION
CR	7/14/16		A	INITIAL RELEASE
CR	11/3/16		B	LOOSENED TOLERANCES, ENLARGED HOLE TO 79.8MM
GFC	30Nov16	DM	C	DIMENSION UPDATE
GFC	16JUN17		D	12.7MM HOLE SIZE UPDATE



VIEW B-B
SCALE 1 : 2

VIEW A-A
SCALE 1 : 2

UNLESS OTHERWISE NOTED DIMENSIONS ARE IN MILLIMETERS & TOLERANCES ARE AS FOLLOWS: X.X: ±0.10 mm X.XX: ±0.01 mm ANGLES: ±0.5° FINISH: 3 MICRONS (µm) BREAK ALL SHARP EDGES & CORNERS .25mm MAX			DRAWN C. RATLIFF CHECKED J. WARD DESIGNED C. RATLIFF ENGINEER	KECK 1 DEPLOYABLE TERTIARY MIRROR STOW & DEPLOY SYSTEMS TITLE SWING ARM ATTACHMENT A		
MATERIAL SEE NOTE 1	FINISH --		SW DOCUMENT FILE 872-LM1203 SWING ARM ATTACHMENT A.SLDPRT	QUANTITY 1	PROJECT CODE K1D3FD NEXT ASSY 872-LM1200	DWG NO 872-LM1203



KECK 1 DEPLOYABLE TERTIARY MIRROR	
STOW & DEPLOY SYSTEMS	
TITLE SWING ARM ATTACHMENT A	
PROJECT CODE K1D3FD	DWG NO 872-LM1203
NEXT ASSY 872-LM1200	D 2/2