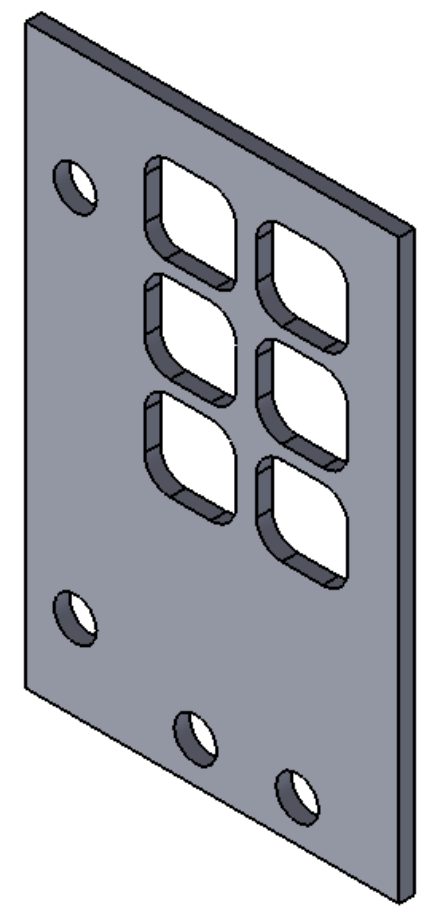
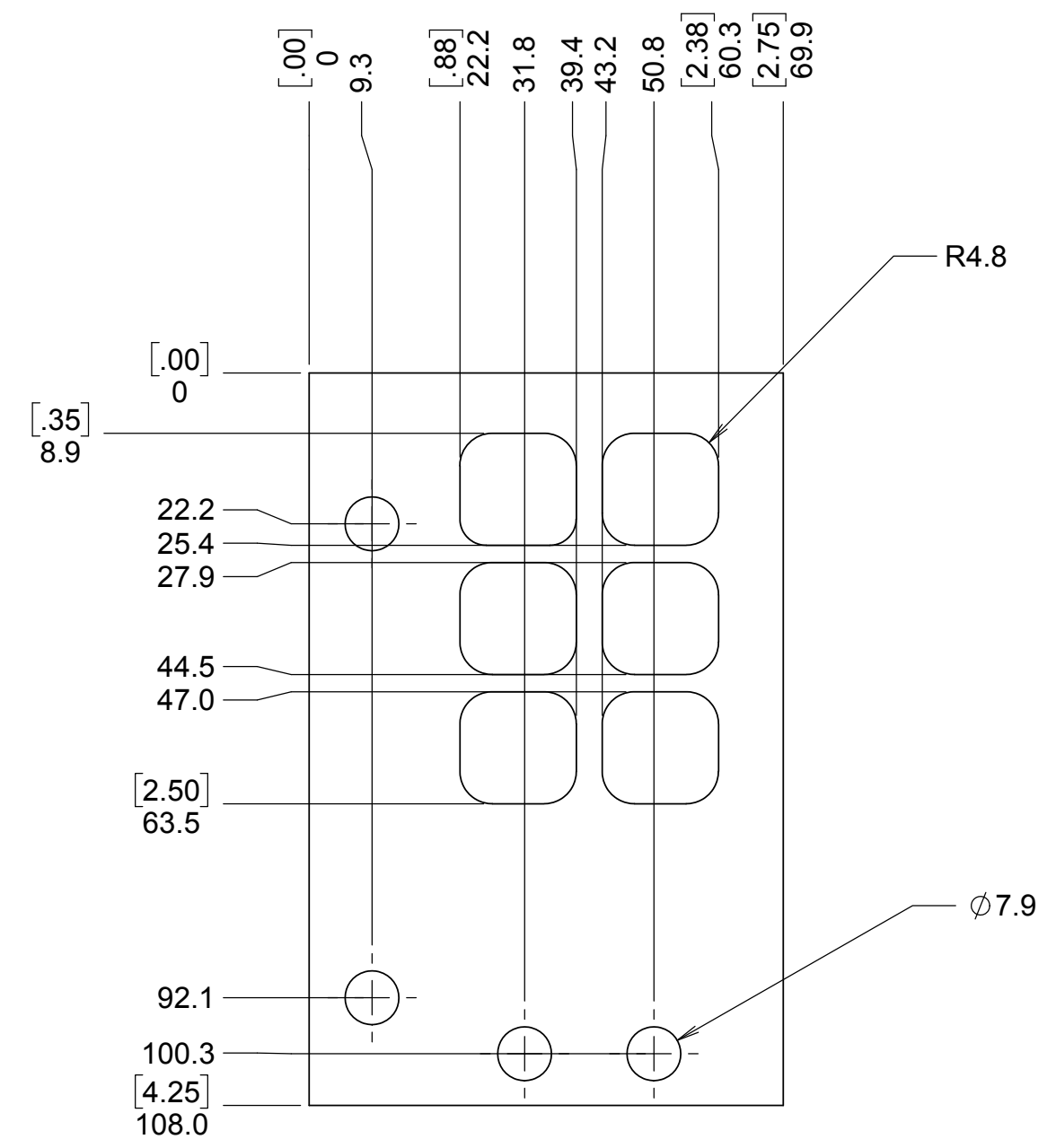


REVISIONS				
DRWN	DATE	CHK'D	REV	DESCRIPTION
CR	1/17/17		A	PRELIMINARY RELEASE



NOTES

- 300 SERIES STAINLESS STEEL
- THICKNESS SHOULD BE BASED ON MAXIMUM MEASURED GAP BETWEEN NODE AND CANOE SPHERE MOUNT (2.95MM AS BUILT)
- MAXIMUM ALLOWABLE FLATNESS AND PARALLELISM .05MM

UNLESS OTHERWISE NOTED DIMENSIONS ARE IN MILLIMETERS & TOLERANCES ARE AS FOLLOWS: X.X: ±0.10 mm X.XX: ±0.01 mm ANGLES: ±0.5° FINISH: 3 MICRONS (µm) BREAK ALL SHARP EDGES & CORNERS .25mm MAX			DRAWN C. RATLIFF CHECKED J. WARD DESIGNED C. RATLIFF ENGINEER	PROJECT CODE K1D3FD NEXT ASSY 872-LM1000	DWG NO 872-LM1004	REV A 1/1
MATERIAL SEE NOTE 1	FINISH --		SW DOCUMENT FILE 872-LM1004.SLDPRT	QUANTITY 2	KECK 1 DEPLOYABLE TERTIARY MIRROR STOW & DEPLOY SYSTEMS TITLE SHIM, CANOE SPHERE MOUNT	