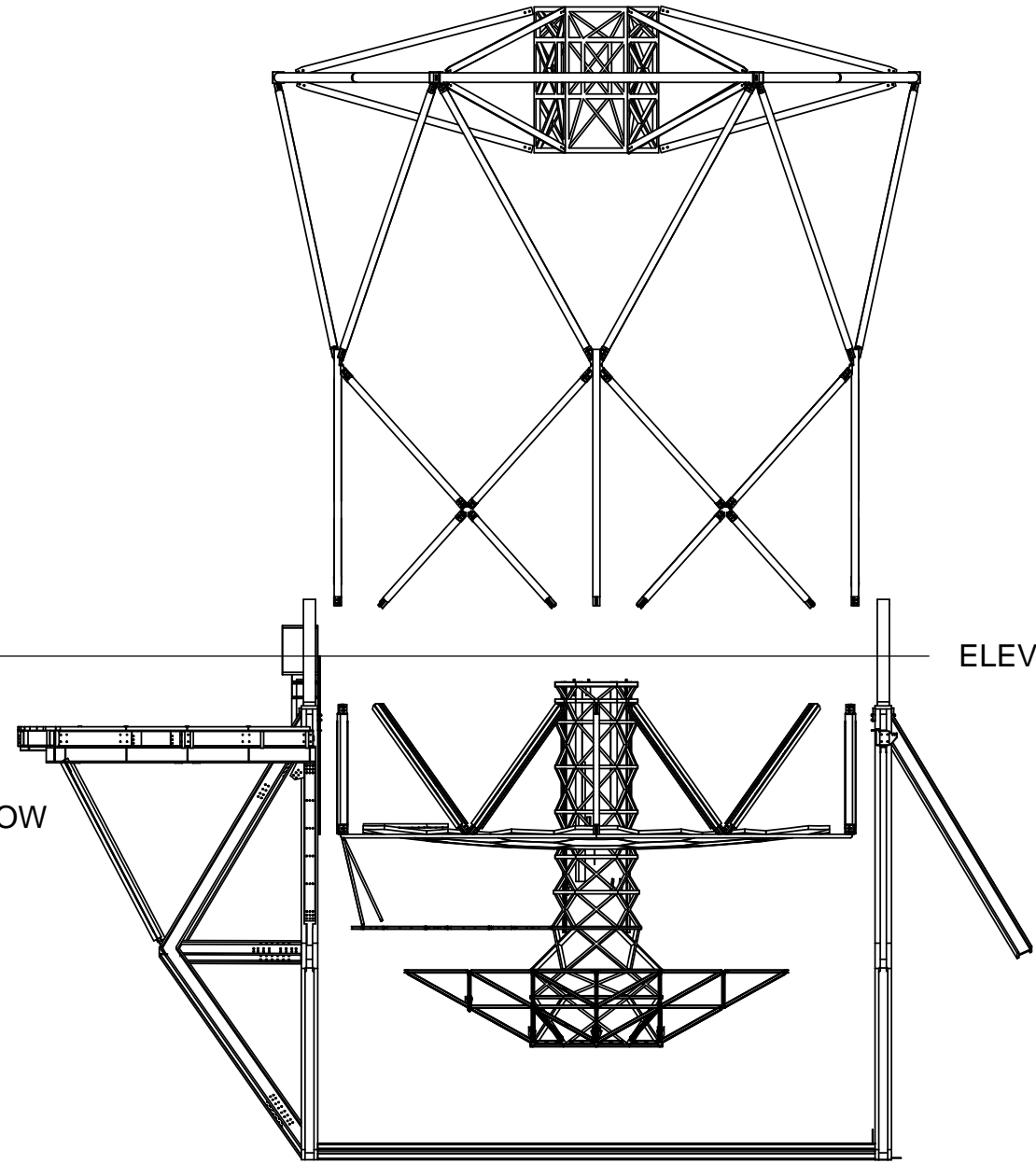
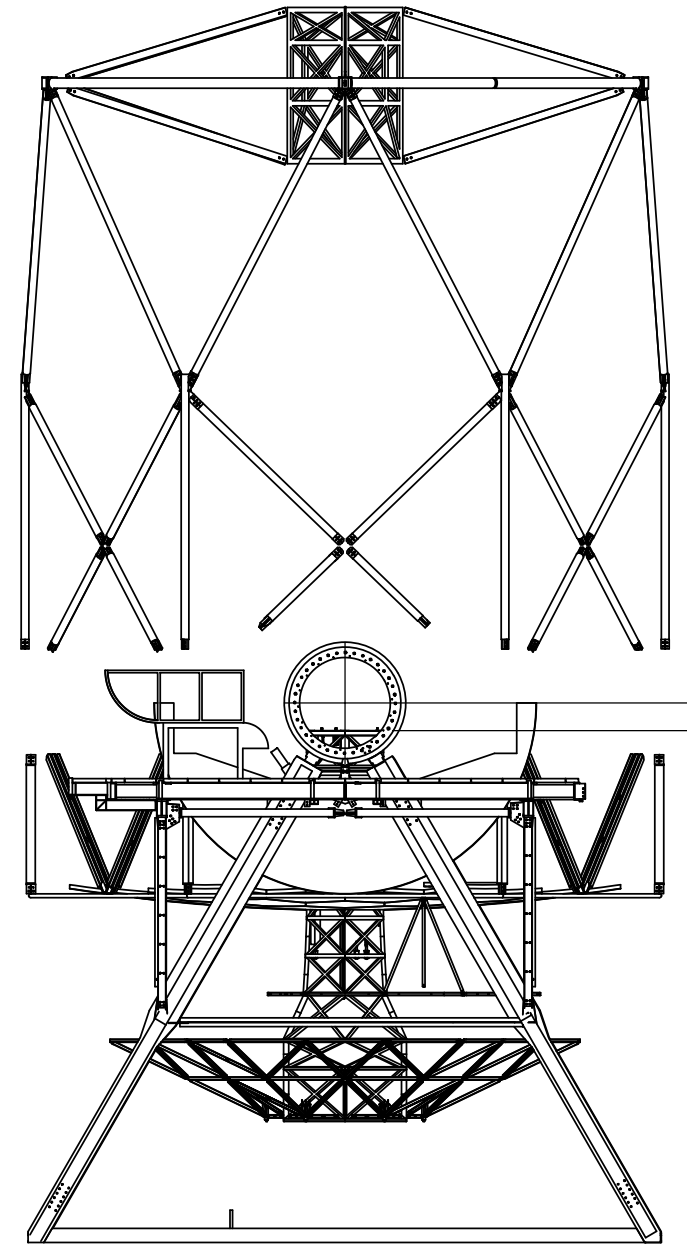


REVISIONS				
REV	DATE	DRWN	CHK'D	DESCRIPTION
A	13JUN11	GFC	GFC	INITIAL RELEASE
B	29JUN11	GFC	--	ADDED FOV DIMENSIONS
C	30JUN11	GFC	--	ADDED SHEET 3
D	01JUL11	GFC	--	DESIGN UPDATE
E	05JUL11	GFC	--	ADDED DIMENSIONS
F	02DEC13	GFC	--	AMENDED INST FOV'S AT ELEVATION PER JN
G	19JUN18	GFC	--	CONVERTED TO 872-LM0005

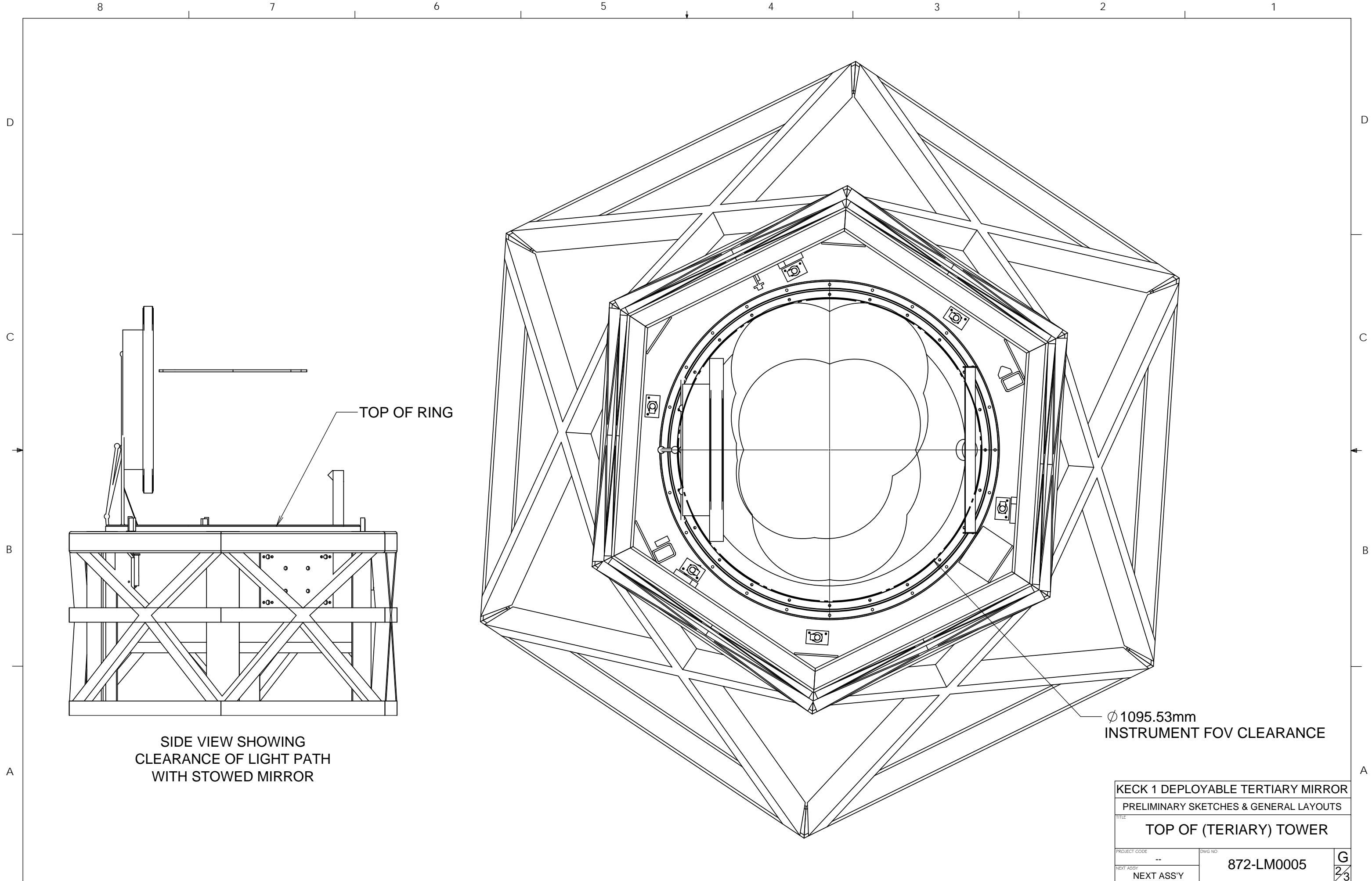


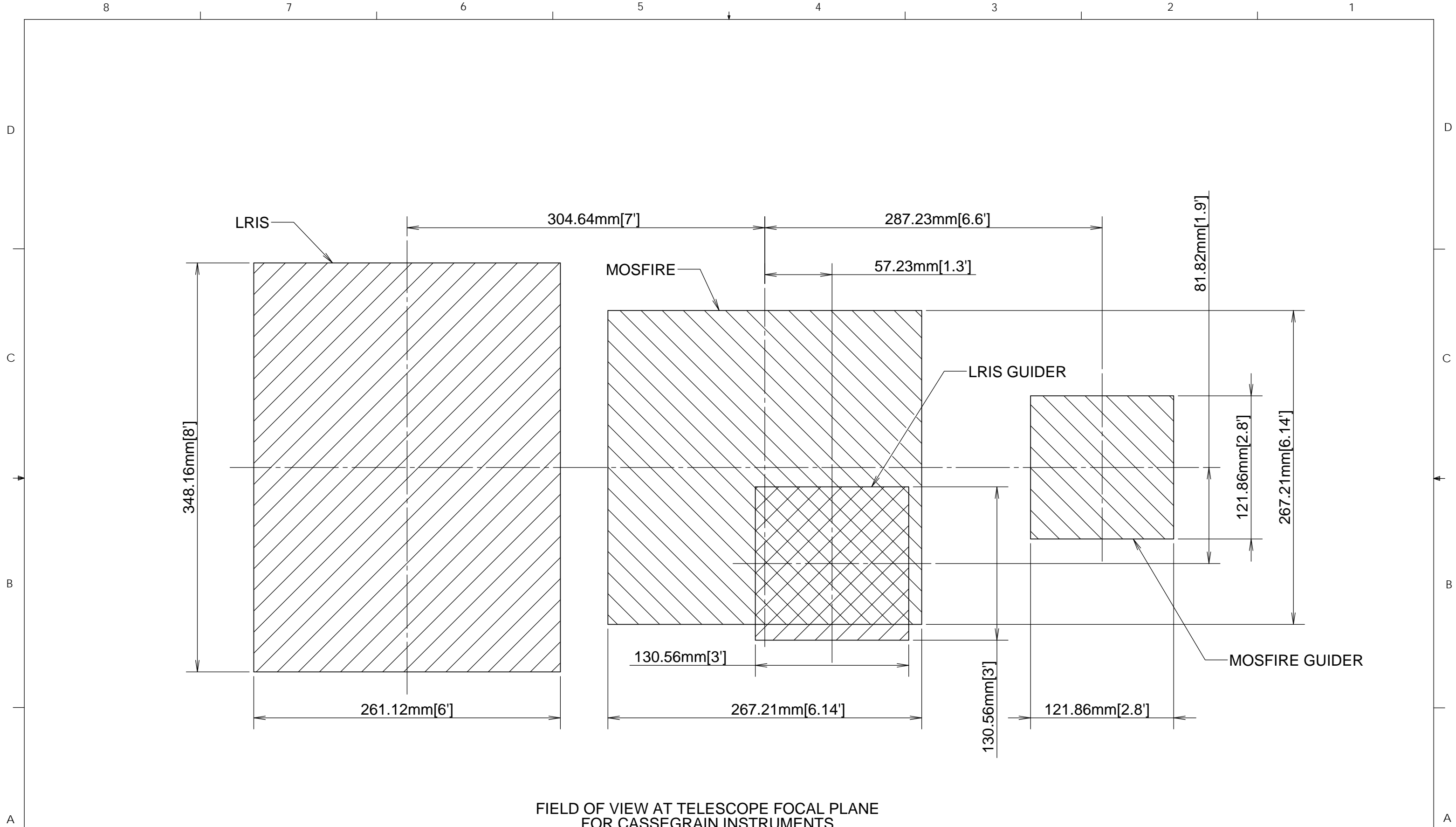
TOP OF TOWER BELOW
ELEVATION AXIS
548.40mm

ELEVATION AXIS

NOTES
1. DIMENSIONS IN mm

UNLESS OTHERWISE NOTED DIMENSIONS ARE IN INCHES & TOLERANCES ARE AS FOLLOWS X.X: ±0.1000" X.XX: ±0.0100" X.XXX: ±0.0050" X.XXXX: ±0.0001" ANGLES: ±0.5° FINISH: 125 MICRO INCHES BREAK ALL SHARP EDGES & CORNERS .002" MAX			DRAWN	CABAK	13JUN11	KECK 1 DEPLOYABLE TERTIARY MIRROR	
			CHECKED	--	--	PRELIMINARY SKETCHES & GENERAL LAYOUTS	
		DESIGNED	--	--	TITLE		TOP OF (TERTIARY) TOWER
		APPROVED	--	--			
MATERIAL	FINISH	SW DOCUMENT FILE		QUANTITY	PROJECT CODE	DWG NO	REV
--	--			--	--	872-LM0005	G 1/3
				NEXT ASSY	NEXT ASS'Y		





FIELD OF VIEW AT TELESCOPE FOCAL PLANE FOR CASSEGRAIN INSTRUMENTS

NOTES
 1 DIMENSION FORMAT XX[YY]
 XX = mm, YY = ARCMIN

KECK 1 DEPLOYABLE TERTIARY MIRROR	
PRELIMINARY SKETCHES & GENERAL LAYOUTS	
TITLE TOP OF (TERTIARY) TOWER	
PROJECT CODE --	DWG NO 872-LM0005
NEXT ASSY NEXT ASS'Y	REV G 3/3