

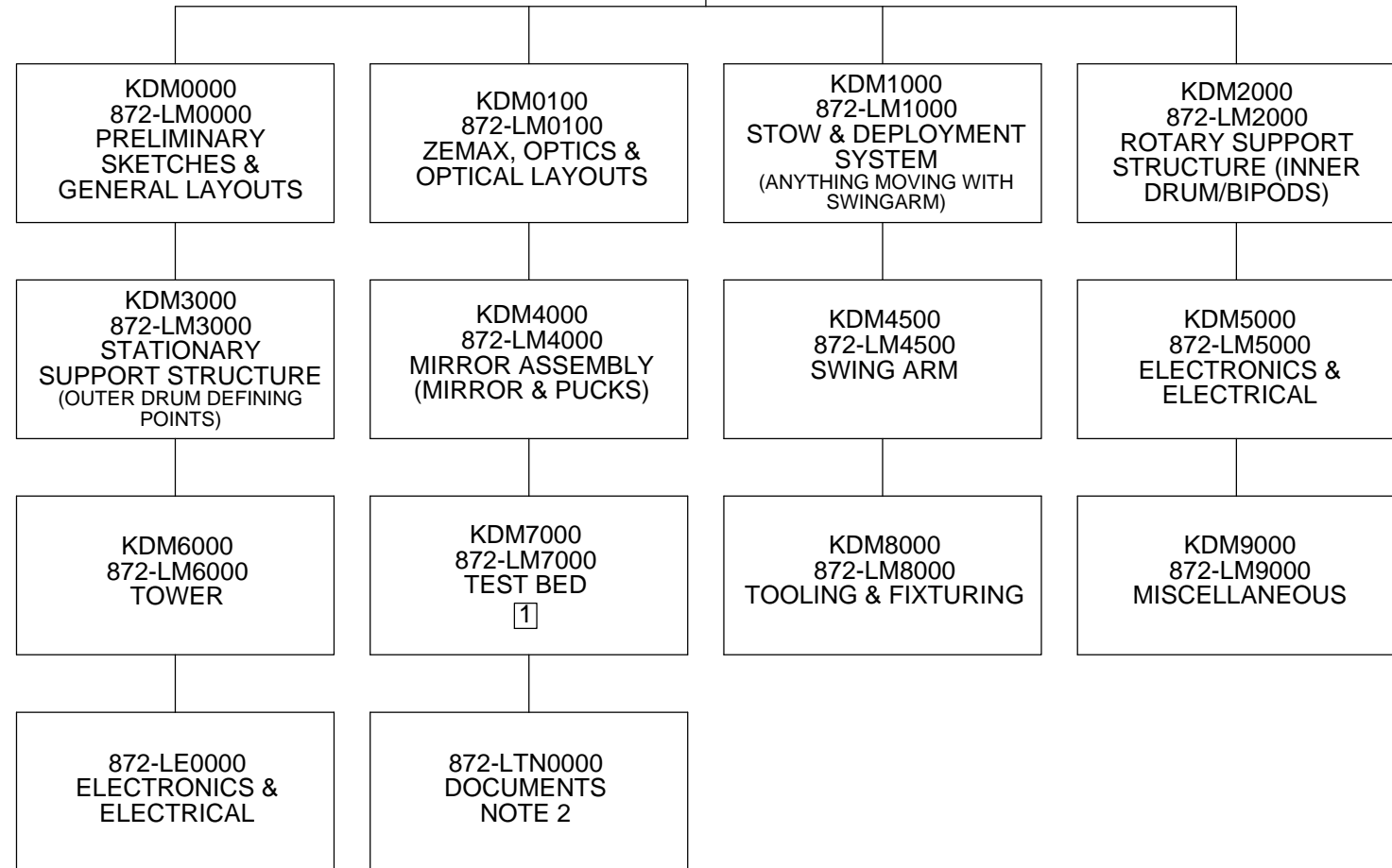
ASSEMBLY DRAWINGS

- 1000 - Canoe Sphere Mount A
- 1008 - Canoe Sphere Mount B
- 1012 - Shock Absorber Clamp Assy
- 1100 - Compliant Hinge Assembly
- 1200 - Actuator and Attachments A
- 1300 - Actuator and Attachments B
- 1317 - Tang Assembly
  
- 2100 - Compressed Air Receiver/Manifold
- 2200 - Inner Drum
- 2203 - Ring and Bipods
- 2217 - Low Voltage Brush Assy
- 2218 - Low Voltage Inner Drum Contact Assembly
- 2223 - 48V Inner Drum Contact Assy
- 2224 - Low Voltage Outer Drum Brush Mount Assy
- 2228 - High Voltage Outer Drum Brush Mount Assy
- 2237 - Compressed Air Clamps Schematic
- 2242 - Clamp Die Spring Assy
- 2246 - Clamp Spring Assembly
  
- 3000 - Outer Drum Weldment
- 3100 - Outer Drum Machined Weldment
- 3101 - Seismic Restraint, Outer Drum Weldment
- 3107 - Solenoid Assy for Kinematic Clamp
- 3109 - Inner Drum Positioner
- 3118 - Anti-Tip Arm A, V Side
- 3119 - Wheel Mount Arm, Anti-Tip
- 3120 - Anti-Tip Arm B, Flat Side
- 3124 - Wheel Mount Arm, Anti-Tip
- 3125 - Outer Drum, Stator Assembly
- 3131 - Harmonic Drive Mount
- 3136 - Air Motor and Detent Compressed Air Plumbing (Schematic)
- 3142 - Compressed Air Delivery System Type 2
- 3147 - Outer Drum Mounted Renishaw Assembly
- 3155 - Tubing Clip Assembly
- 3236 - Air Motor and Detent Plumbing SubAssy
  
- 4010 - Mirror Support Frame Weldment
- 4021 - Axial Flexure Rod Assembly
- 4022 - Lateral Flexure Rod Assembly
- 4030 - Earthquake Clip Assembly
- 4100 - Mirror, Bonded
- 4200 - Mirror Assembly
  
- 4510 - Swing Arm Weldment
- 4520 - Groove Plate Assembly
- 4526 - Level Pad Assembly
- 4600 - Swing Arm Assembly
- 4700 - Mirror & Swing Arm Assembly
  
- 5101 - Electronics Box Cooling Schematic
- 5200 - M1 Electronics Box
- 5201 - Electronics Box Cooling Layout
  
- 6009 - Clevis Assembly
- 6100 - Clamping System Pneumatics
  
- 7000 - Kinematic Test Bed with Actuator
- 7040 - Deployed Kinematic Coupling Clamp
- 7044 - Full Scale Assembly Drawing
- 7052 - Brush Test Assembly
  
- 8000 - Tower Defining Point Locating Jig
- 8102 - Tertiary Tower Defining Points Measuring Jig Roller Bar
- 8118 - M3 Rotation Axis Jig
- 8125 - Dummy Mirror Assembly
- 8133 - As-Built Footpring Assy
- 8200 - Tower Defining Point Locating Jig
- 8204 - ODF Attachment
- 8217 - V-Block Adjustor Assy
- 8231 - Existing M3 Attachment Jig Assy
- 8234 - Existing M3 Attachment Weldment
- 8236 - Target Reticle and Autocollimation Face
- 8250 - Rail Span Weldment
- 8270 - Hex Fixture Extension Weldment

- 8308 - Axial Glue Fixture Assy
- 8309 - Lateral Glue Fixture Assy
- 8310 - Axial Test Block Fixturing Set-up
- 8311 - Lateral Test Block Fixturing Set-up
- 8320 - Tripod Weldment, Glue Jig
- 8332 - Tripod Assembly
- 8334 - Hoist Ring Assembly
- 8335 - Axial Glue Jig Assembly
- 8336 - Lateral Glue Jig Assembly
- 8337 - Glue Jig Assembly
- 8340 - Mirror Axes Jigging Setup
- 8341 - Tripod & Glue Jig Setup
- 8343 - Level Pad Spanner Tool
  
- 8404 - Mockup Mirror Assembly
- 8410 - Mirror Handling Frame
- 8420 - Tower Docking Test Mount Assembly
- 8443 - Mirror Center Locating Fixture
- 8444 - Center Car Assembly
- 8448 - Dummy Weight Assy
  
- 8506 - Ring Gear Drill Jig Assembly
- 8508 - Defining Point Z Alignment Assembly C
- 8515 - Bearing Ring Press Assembly
- 8518 - Bearing Press Ring Assembly
- 8533 - Defining Point Z Alignment Assembly B
  
- 8600 - Shipping Weldment
- 8666 - Tip Tilt Stage Modification Assy
- 8667 - Autocollimation Mirror Assy
- 8683 - Depth Micrometer Platform Assy
  
- 9010 - Low Voltage Brush Assembly
- 9030 - Docking Design
- 9040 - Instrument Module Shipping Crate
- 9050 - Mirror Assembly Shipping Crate
- 9070 - Swing-Arm with Mock-up Mirror

REVISIONS				
REV	DATE	DRWN	CHK'D	DESCRIPTION
A	11MAR14	GFC	--	INITIAL RELEASE
B	30MAY14	CTR		ADDED TEST BED
C	4NOV14	CTR		MODIFIED TEXT
D	13APR15	GFC		ADDED NOTE
E	30DEC15	GFC	--	ADDED 4500
F	24MAR16	GFC	--	ADDED KECK NUMBERING
G	13APR16	GFC	--	UPDATED & CHANGES P/N
H	15JUN16	GFC	--	ASSY DRAWING LIST
J	30JUN16	GFC	--	LIST UPDATE
K	29JUL16	GFC	KECK	872-LTN0000 ADDED
L	26AUG16	GFC	--	ASSY DRAWING UPDATE
M	06OCT16	GFC	--	ASSY DRAWING LIST UPDATE
N	28OCT16	GFC	--	UPDATE
P	18JAN17	GFC	--	UPDATE
R	03FEB17	GFC	--	ASSY LIST UPDATE
T	01SEP17	GFC	--	LISTING UPDATE
U	08FEB18	GFC	--	ASSY LISTING UPDATE
V	24APR18	GFC	--	ASSY DRAWING LIST UPDATE
W	16JUL18	GFC	--	ASSY LIST UPDATE
Y	22OCT18	GFC	--	ASSY LIST UPDATE

KDMxxxx  
872-LMxxxx  
**FAMILY TREE**



**NOTES**

- 1 INCLUDES BOTH SMALLEST SCALE KINEMATIC & AUTOMATED TEST BEDS
- 2 ALL DOCUMENTS OTHER THAN TECHNICAL DRAWINGS: SUCH AS MAINTENANCE & OPERATIONS MANUALS, PROCEDURES, & TECHNICAL/DESIGN NOTES

UNLESS OTHERWISE NOTED DIMENSIONS ARE IN INCHES & TOLERANCES ARE AS FOLLOWS	
X.X: ±0.1000"	X.XX: ±0.0100"
X.XXX: ±0.0050"	X.XXXX: ±0.0001"
ANGLES: ±0.5° FINISH: 125 MICRO INCHES	
BREAK ALL SHARP EDGES & CORNERS .002" MAX	
MATERIAL	FINISH
--	--



DRAWN	CABAK	--	KECK 1 DEPLOYABLE TERTIARY MIRROR
CHECKED	--	--	DOCUMENTATION
DESIGNED	--	--	TITLE
ENGINEER	--	--	DOCUMENT FAMILY TREE
SW DOCUMENT FILE	QUANTITY	PROJECT CODE	DWG NO
--	--	-	-
		NEXT ASSY	872-LM0000
			REV Y 1/1