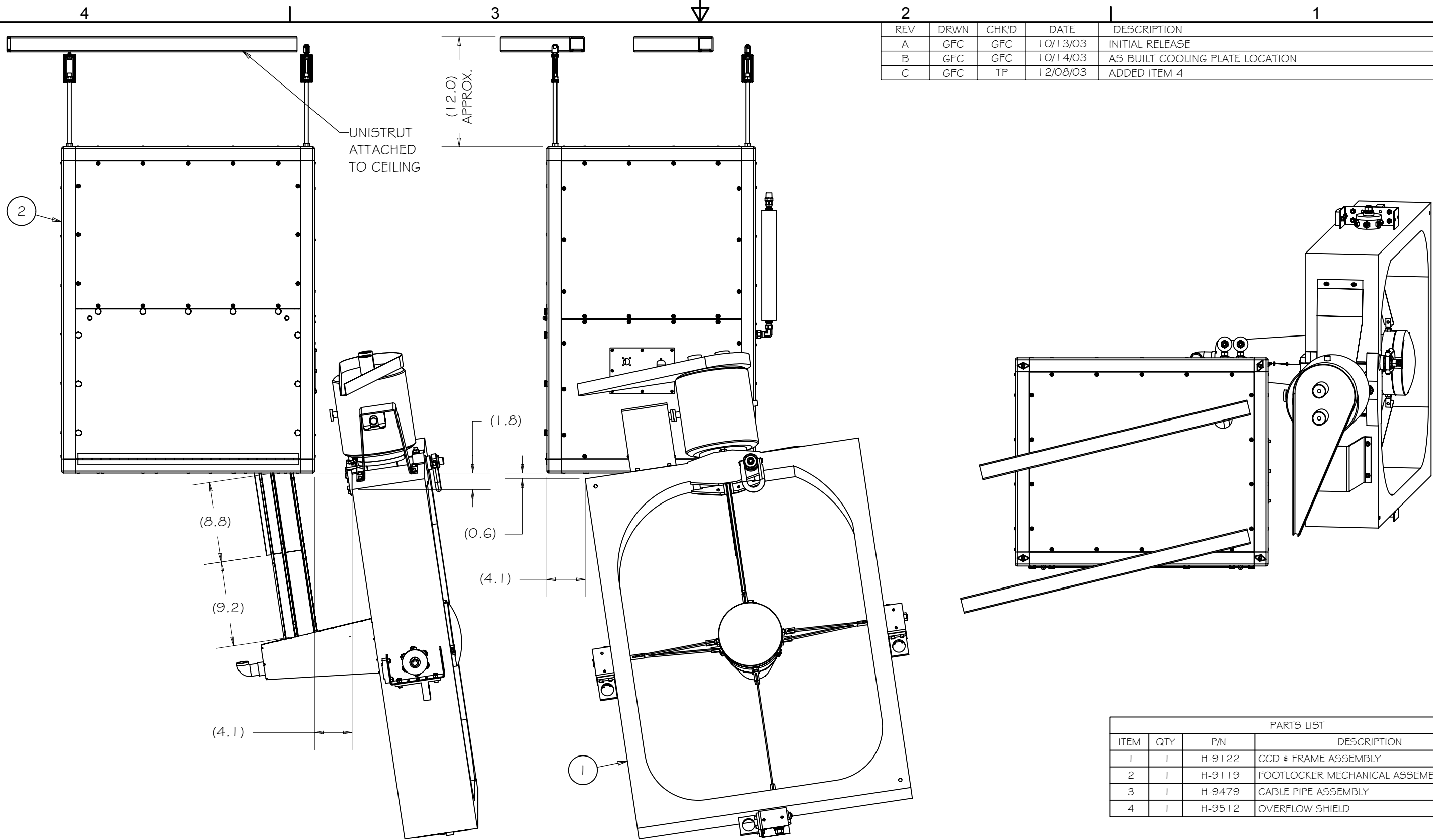


REV	DRWN	CHK'D	DATE	DESCRIPTION
A	GFC	GFC	10/13/03	INITIAL RELEASE
B	GFC	GFC	10/14/03	AS BUILT COOLING PLATE LOCATION
C	GFC	TP	12/08/03	ADDED ITEM 4



PARTS LIST			
ITEM	QTY	P/N	DESCRIPTION
1	1	H-9122	CCD # FRAME ASSEMBLY
2	1	H-9119	FOOTLOCKER MECHANICAL ASSEMBLY
3	1	H-9479	CABLE PIPE ASSEMBLY
4	1	H-9512	OVERFLOW SHIELD

TOLERANCES UNLESS OTHERWISE NOTED:
 FRACTIONAL: 0"-6": ±1/64" 6"-24": ±1/32"
 24"+: ±1/16"
 DECIMAL: X.X: ±0.1000" X.XX: ±0.0100"
 X.XXX: ±0.0050" X.XXXX: ±0.0001"
 ANGLES: ±0.5° FINISH: 125 MICRO INCHES
 BREAK ALL SHARP EDGES & CORNERS 1/64" MAX

MATERIAL	FINISH
PARTS LIST	



DRAWN	G CABAK	10/13/2003
CHECKED		
DESIGNED	G CABAK	
ENGINEER	G CABAK	

HIRES CCD UPGRADE	
MAJOR ASSEMBLIES	
TITLE	
CCD UPGRADE MECHANICAL ASSEMBLY	

PROJECT CODE	KHCCDE
DO NOT SCALE DRAWING	

DWG NO	H-9125
REV	C