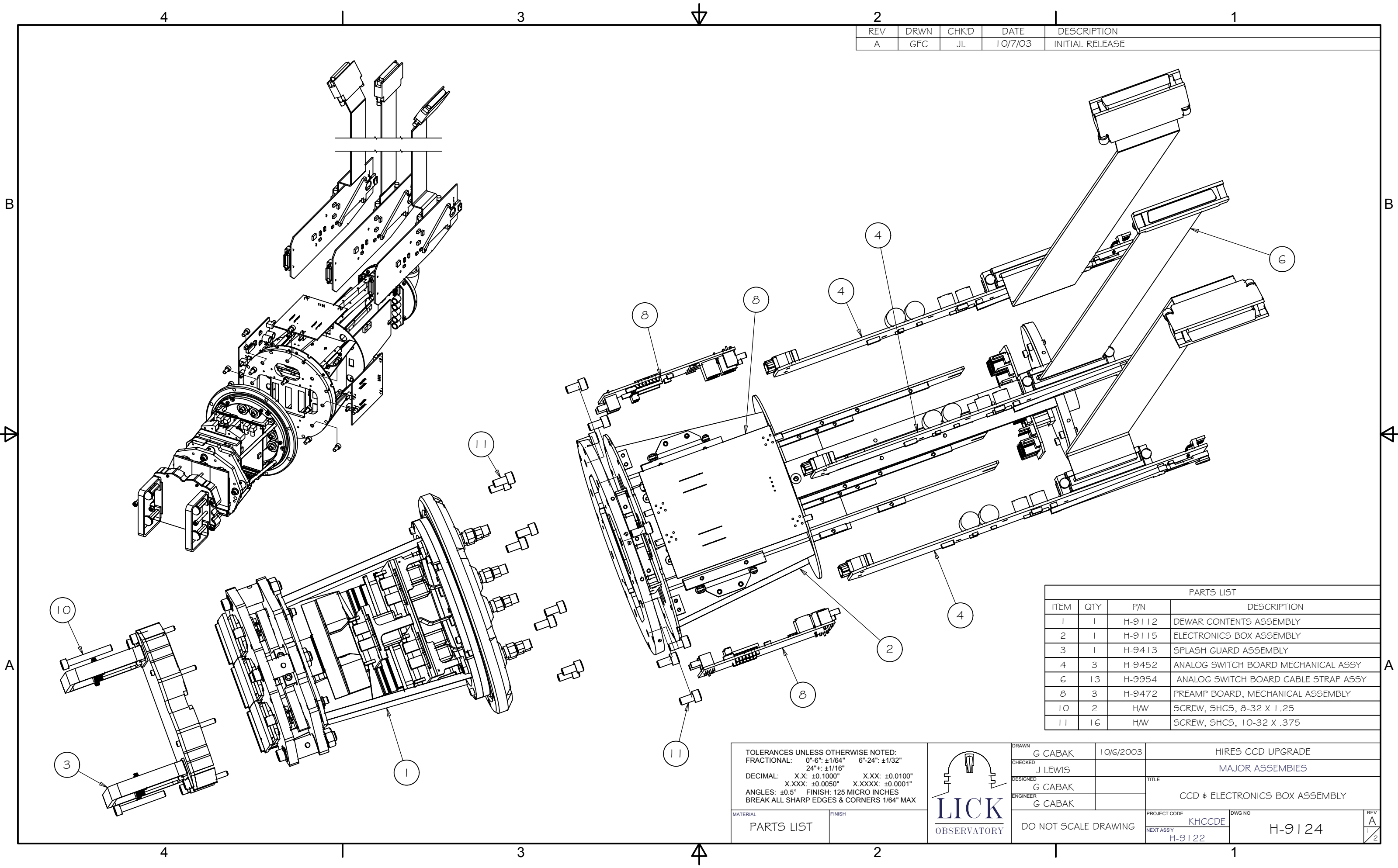


REV	DRWN	CHK'D	DATE	DESCRIPTION
A	GFC	JL	10/7/03	INITIAL RELEASE



PARTS LIST			
ITEM	QTY	P/N	DESCRIPTION
1	1	H-9112	DEWAR CONTENTS ASSEMBLY
2	1	H-9115	ELECTRONICS BOX ASSEMBLY
3	1	H-9413	SPLASH GUARD ASSEMBLY
4	3	H-9452	ANALOG SWITCH BOARD MECHANICAL ASSY
6	13	H-9954	ANALOG SWITCH BOARD CABLE STRAP ASSY
8	3	H-9472	PREAMP BOARD, MECHANICAL ASSEMBLY
10	2	H/W	SCREW, SHCS, 8-32 X 1.25
11	16	H/W	SCREW, SHCS, 10-32 X .375

TOLERANCES UNLESS OTHERWISE NOTED:
 FRACTIONAL: 0"-6": ±1/64" 6"-24": ±1/32"
 24"+: ±1/16"
 DECIMAL: X.X: ±0.1000" X.XX: ±0.0100"
 X.XXX: ±0.0050" X.XXXX: ±0.0001"
 ANGLES: ±0.5° FINISH: 125 MICRO INCHES
 BREAK ALL SHARP EDGES & CORNERS 1/64" MAX

MATERIAL	FINISH
PARTS LIST	



DRAWN	G CABAK	10/6/2003	HIRES CCD UPGRADE
CHECKED	J LEWIS		MAJOR ASSEMBLIES
DESIGNED	G CABAK		TITLE
ENGINEER	G CABAK		CCD & ELECTRONICS BOX ASSEMBLY
DO NOT SCALE DRAWING		PROJECT CODE	DWG NO
		KHCCDE	H-9124
		NEXT ASSY	REV
		H-9122	A
			1/2

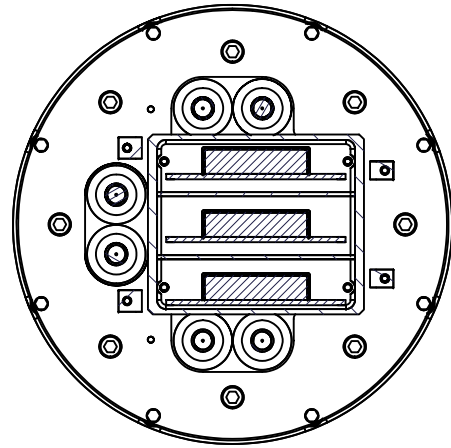
4

3

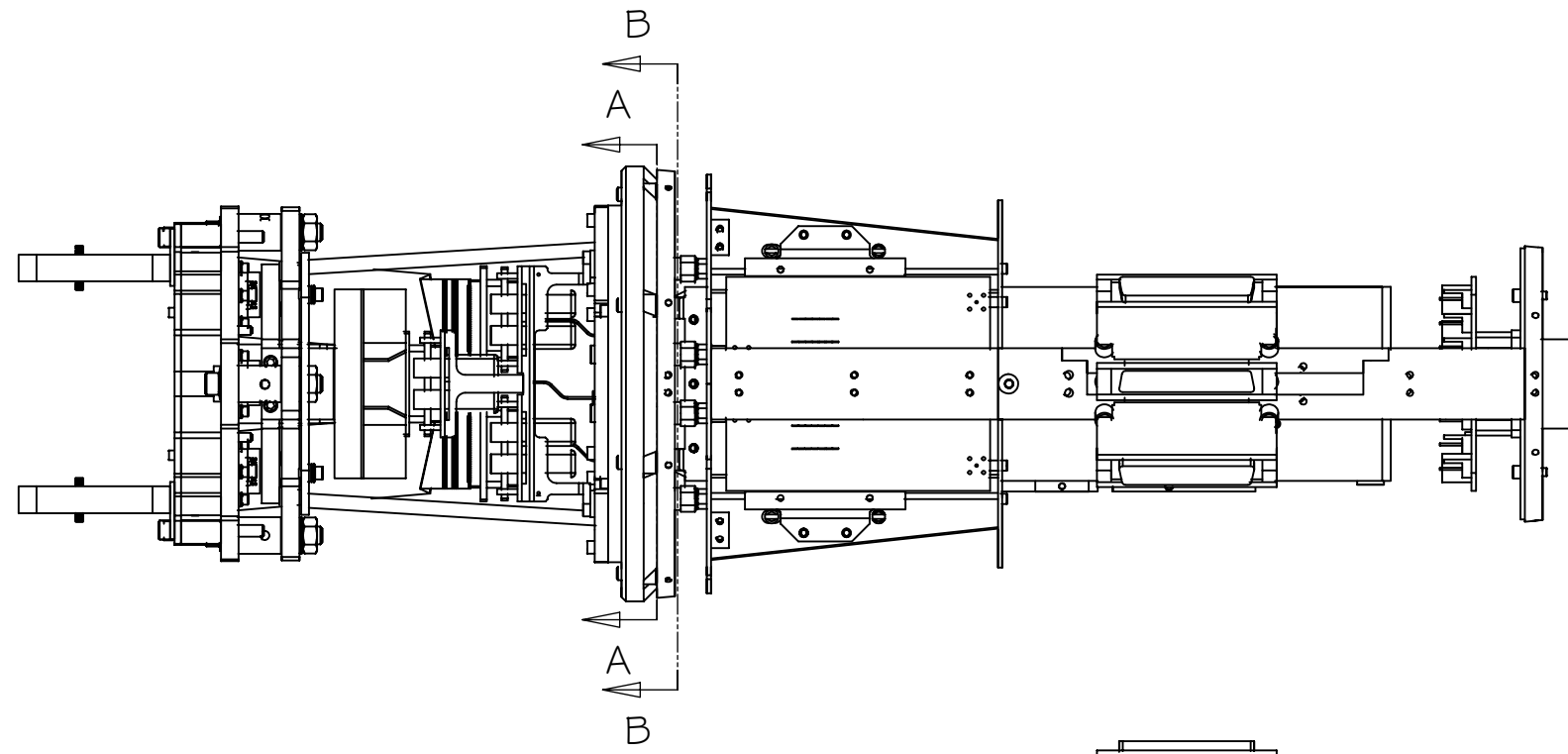
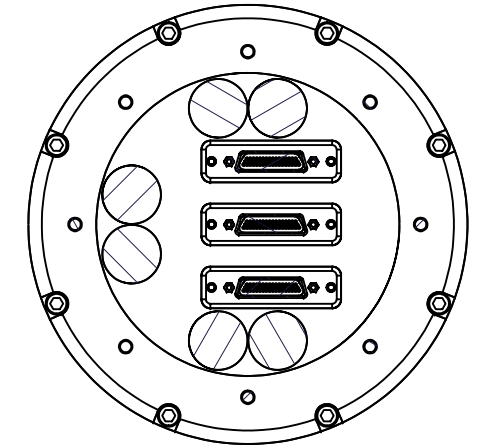
2

1

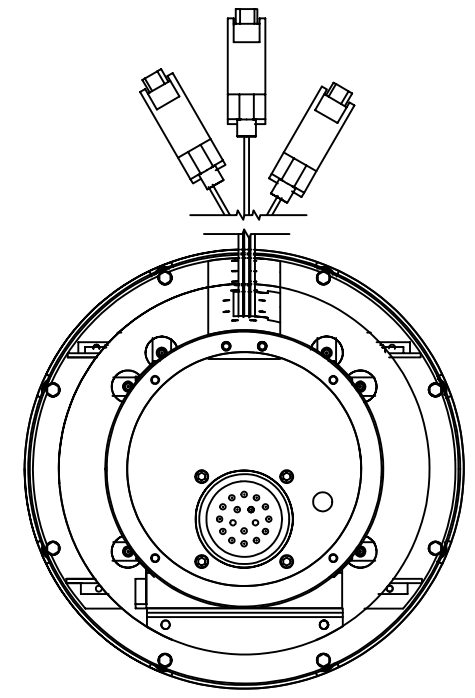
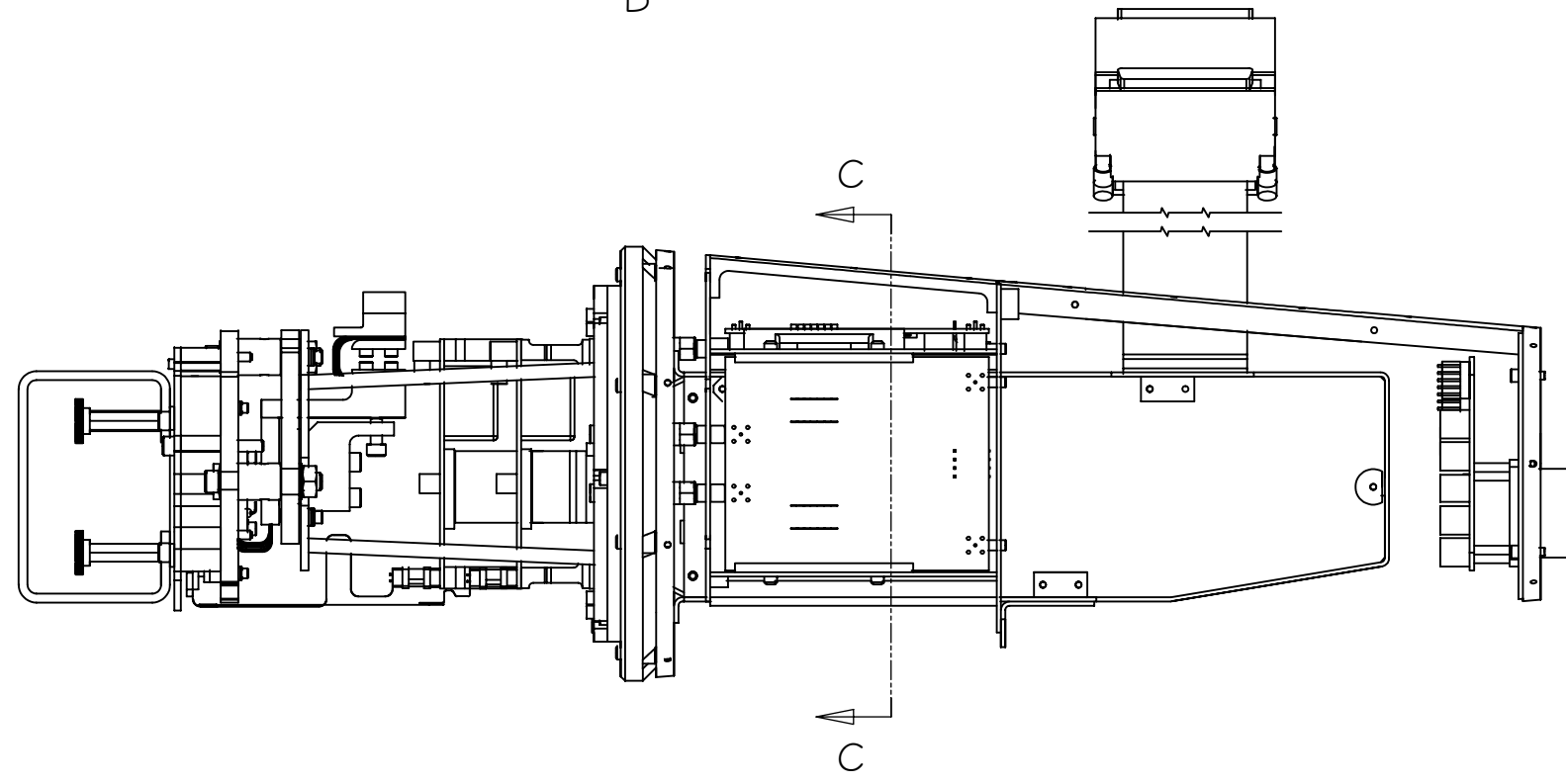
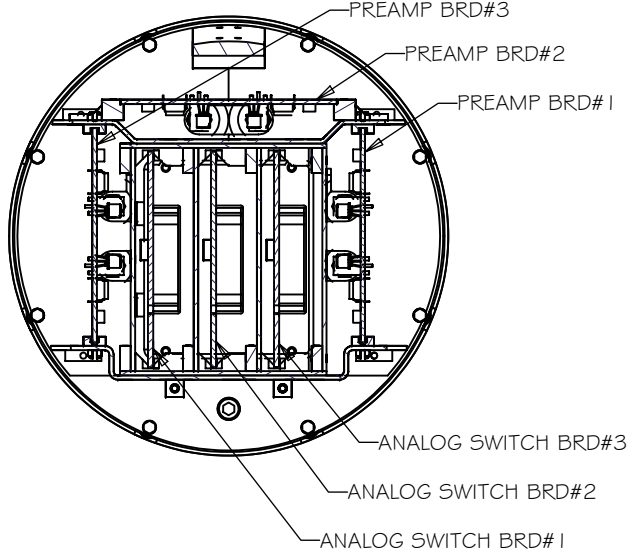
SECTION B-B



SECTION A-A



SECTION C-C



HIRES CCD UPGRADE		
MAJOR ASSEMBLIES		
TITLE CCD & ELECTRONICS BOX ASSEMBLY		
PROJECT CODE KHCCDE	DWG NO H-9124	REV A
NEXT ASSY H-9122		2/2

4

3

2

1