

4

3

2

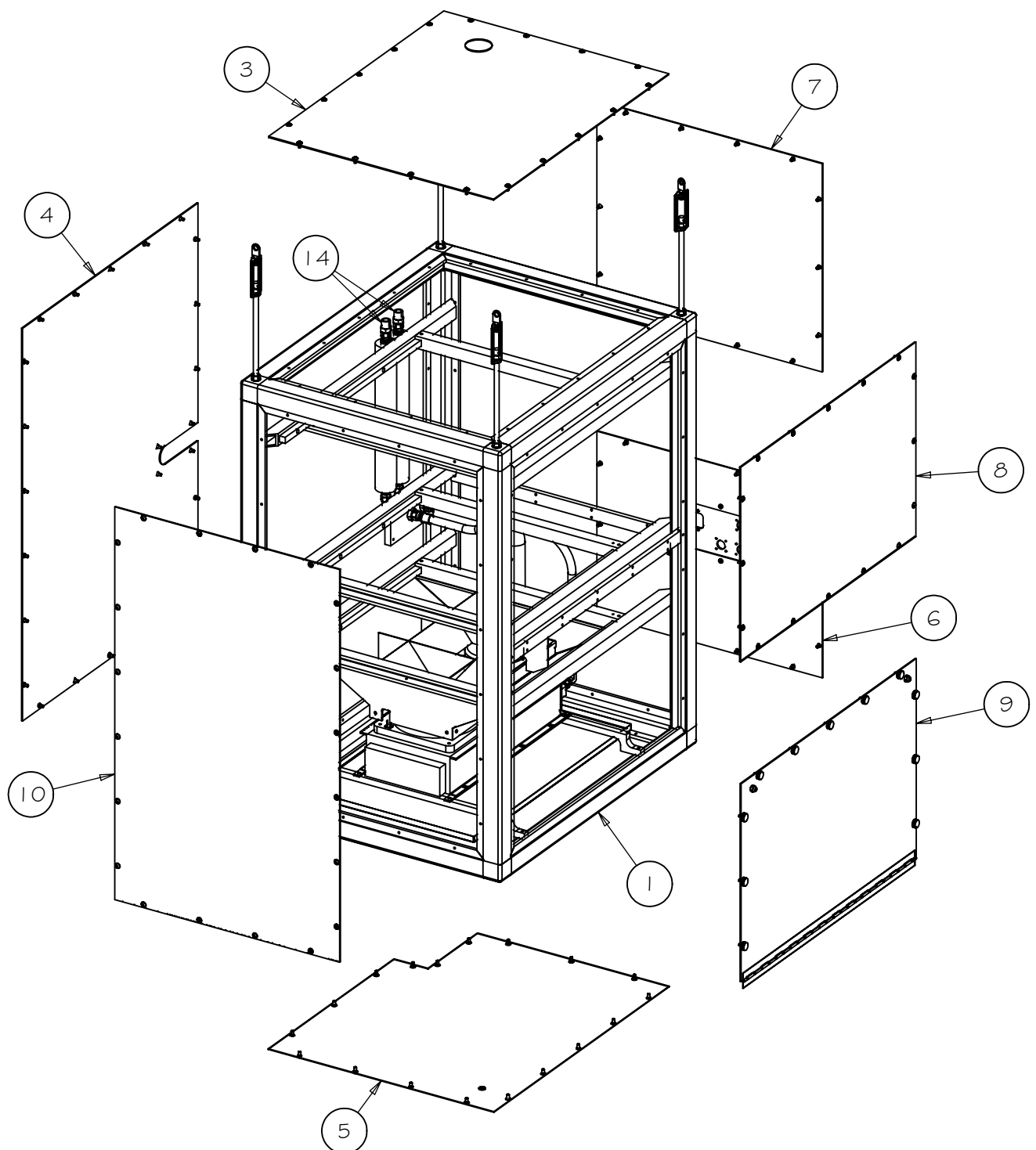
1

REV	DRWN	CHK'D	DATE	DESCRIPTION
A	GFC	JL	8/8/03	INITIAL RELEASE
B	GFC	GFC	10/9/03	ADDED REMAINING COMPONENTS
C	GFC	GFC	10/14/03	ADDED ITEM 39 AND NOTE 4
D	GFC	DK	10/17/03	ADDED NOTE 5
E	GFC	GFC	10/21/03	ADDED DIMENSIONS (SHEET 2)
F	GFC	DK	10/29/03	CORRECTED WEIGHT IN NOTE 5

B

A

A



PARTS LIST			
ITEM	QTY	P/N	DESCRIPTION
1	1	H-9120	FRAME
2	1	H-9121	HEAT EXCHANGER ASSEMBLY
3	1	H-9682	TOP PANEL ASSEMBLY
4	1	H-9681	FAR SIDE PANEL ASSEMBLY
5	1	H-9683	BOTTOM PANEL ASSEMBLY
6	1	H-9680	DEWAR SIDE BOTTOM PANEL ASSEMBLY
7	1	H-9679	DEWAR SIDE TOP PANEL ASSEMBLY
8	1	H-9677	NEAR SIDE TOP PANEL ASSEMBLY
9	1	H-9678	NEAR SIDE BOTTOM PANEL ASSEMBLY
10	1	H-9676	ACCESS PANEL ASSEMBLY
11	1	H-9664	PAN ASSEMBLY
12	1	H-9686-1	HOSE ASSEMBLY
13	1	H-9686-2	HOSE ASSEMBLY
14	2	H-9687	EXTENDER HOSE ASSEMBLY
15	4	H-9668-3	BRACE, 1x1 TUBE, FIBERGLASS, TYPE C
16	6	H-9670	RAIL, 1/2x1/2 CHANNEL
17	1	H-9668-1	BRACE, 1x1 TUBE, FIBERGLASS, TYPE A
18	1	H-9668-2	BRACE, 1x1 TUBE, FIBERGLASS, TYPE B
19	2	H-9669-1	BEAM, 1x1 TUBE, AL, TYPE A
20	4	H-9669-2	BEAM, 1x1 TUBE, AL, TYPE B
21	2	H-9666	BAR, SUPPORT, HEAT EXCHANGER
22	1	H-9672	NEAR SIDE SEAM BRACE
23	1	H-9673	DEWAR SIDE SEAM BRACE
24	2	H/W	SPRING ANCHOR, .16 DIA, 1/4-20, .75 LG
25	1	H-9674	CORNER PLATE, TYPE A
26	1	H-9675	CORNER PLATE, TYPE B
27	24	H/W	RIVET NUT, 10-24, MCMMASTER-CARR #95105A127
28	2	H-9684	HEAT EXCHANGER SUPPORT BRACE
33	4	H/W	RIVET NUT, 3/8-16, MCMMASTER-CARR, #95105A168
34	1	H-9689	COOLANT PLATE
35	4	H/W	THREADED ROD, 3/8-16
36	4	H/W	TURNBUCKLE, 3/8-16
37	8	H/W	NUT, 3/8-16
38	AR	MAT'L	ETHAFOAM 220
39	AR	MAT'L	PORON URETHANE FOAM, ROGERS CORP., SEE NOTES

NOTES

- 1 FOR COOLING FITTING DETAILS, SEE H-9607-1 & H-9608
- 2 PAINT EXTERIOR SURFACES OF PANELS & FRAME AMERON, AMERCOAT, #385 BLACK RESIN
- 3 APPLY FOAM AS NEEDED TO INSIDE PANEL SURFACES & ADJACENT FRAME MEMBERS
- 4 PANEL GASKET MAT'L, PORON URETHANE FOAM, ROGERS CORP., .54" WIDE, GRADE 4701-30-20093-04, WITH T-497 ADHESIVE, APPLY TO ALL FLANGES TO WHICH PANELS CONTACT
- 5 WEIGHT, 179 LBS; INCLUDING ALL ELECTRONICS, PLUMBING FLOODED WITH COOLANT

TOLERANCES UNLESS OTHERWISE NOTED:	
FRACTIONAL:	0"-6": ±1/64"    6"-24": ±1/32" 24"+: ±1/16"
DECIMAL:	X.X: ±0.1000"    X.XX: ±0.0100" X.XXX: ±0.0050"    X.XXXX: ±0.0001"
ANGLES: ±0.5°    FINISH: 125 MICRO INCHES BREAK ALL SHARP EDGES & CORNERS 1/64" MAX	
MATERIAL	FINISH
PARTS LIST	NOTE 2



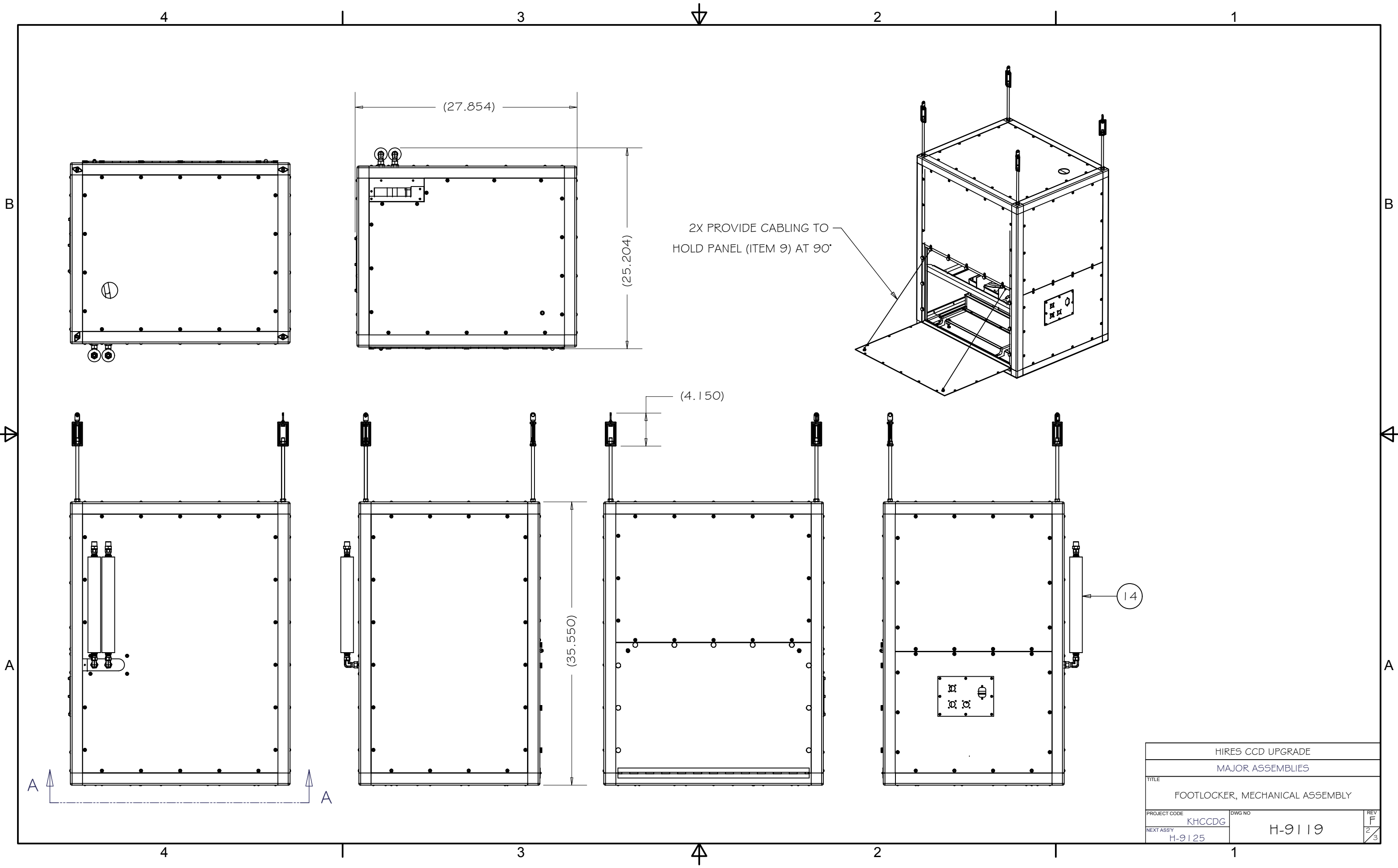
DRAWN	G CABAK	8/7/2003	HIRES CCD UPGRADE	
CHECKED	J LEWIS		MAJOR ASSEMBLIES	
DESIGNED	G CABAK		TITLE	
ENGINEER	G CABAK		FOOTLOCKER, MECHANICAL ASSEMBLY	
DO NOT SCALE DRAWING			PROJECT CODE	DWG NO
			KHCCDG	H-9119
			NEXT ASSY	REV
			H-9125	F
				1/3

4

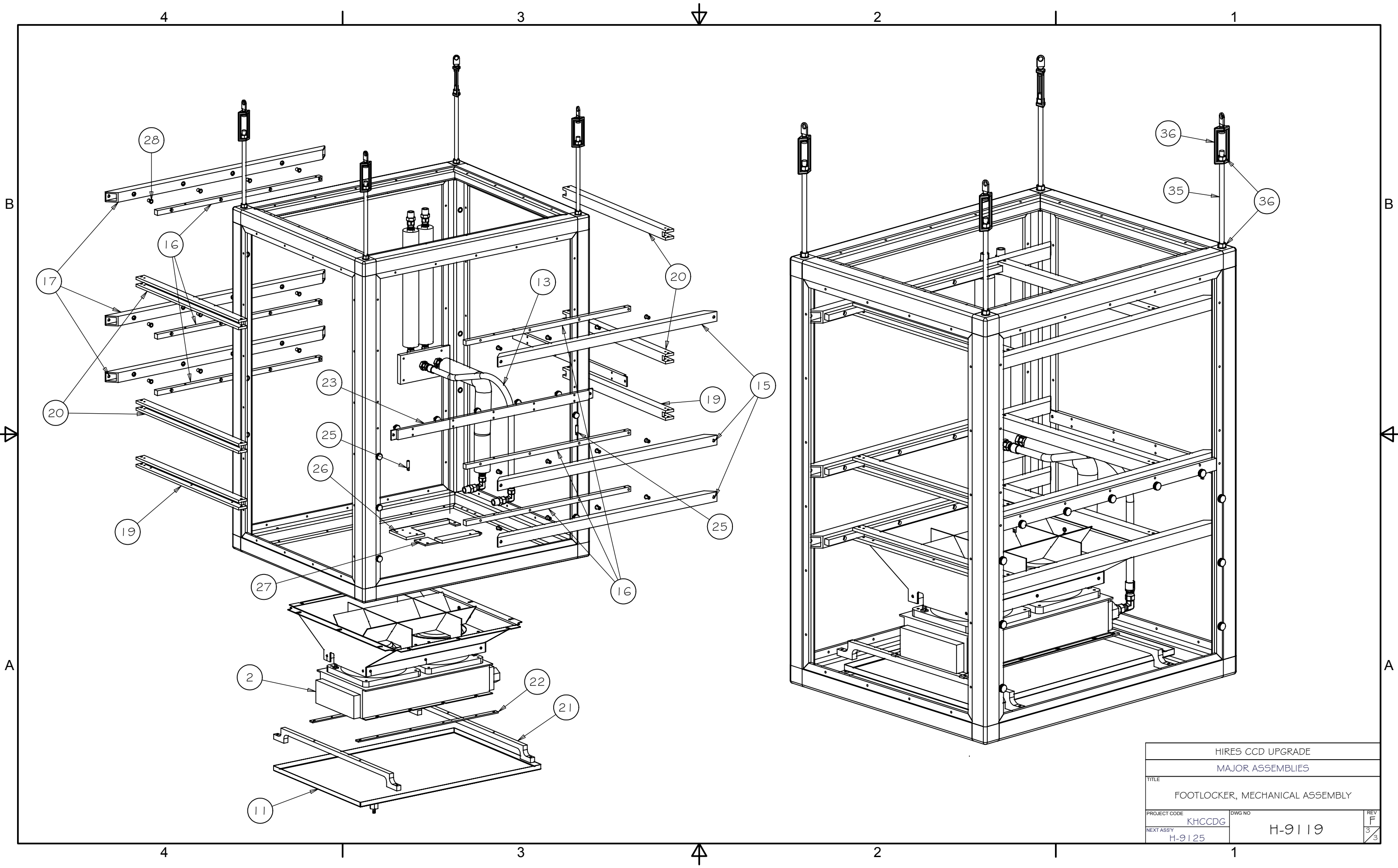
3

2

1



HIRES CCD UPGRADE	
MAJOR ASSEMBLIES	
TITLE FOOTLOCKER, MECHANICAL ASSEMBLY	
PROJECT CODE KHCCDG	DWG NO H-9119
NEXT ASSY H-9125	REV F 2/3



HIRES CCD UPGRADE			
MAJOR ASSEMBLIES			
TITLE FOOTLOCKER, MECHANICAL ASSEMBLY			
PROJECT CODE	KHCCDG	DWG NO	H-9119
NEXT ASSY	H-9125		
			REV F 3/3