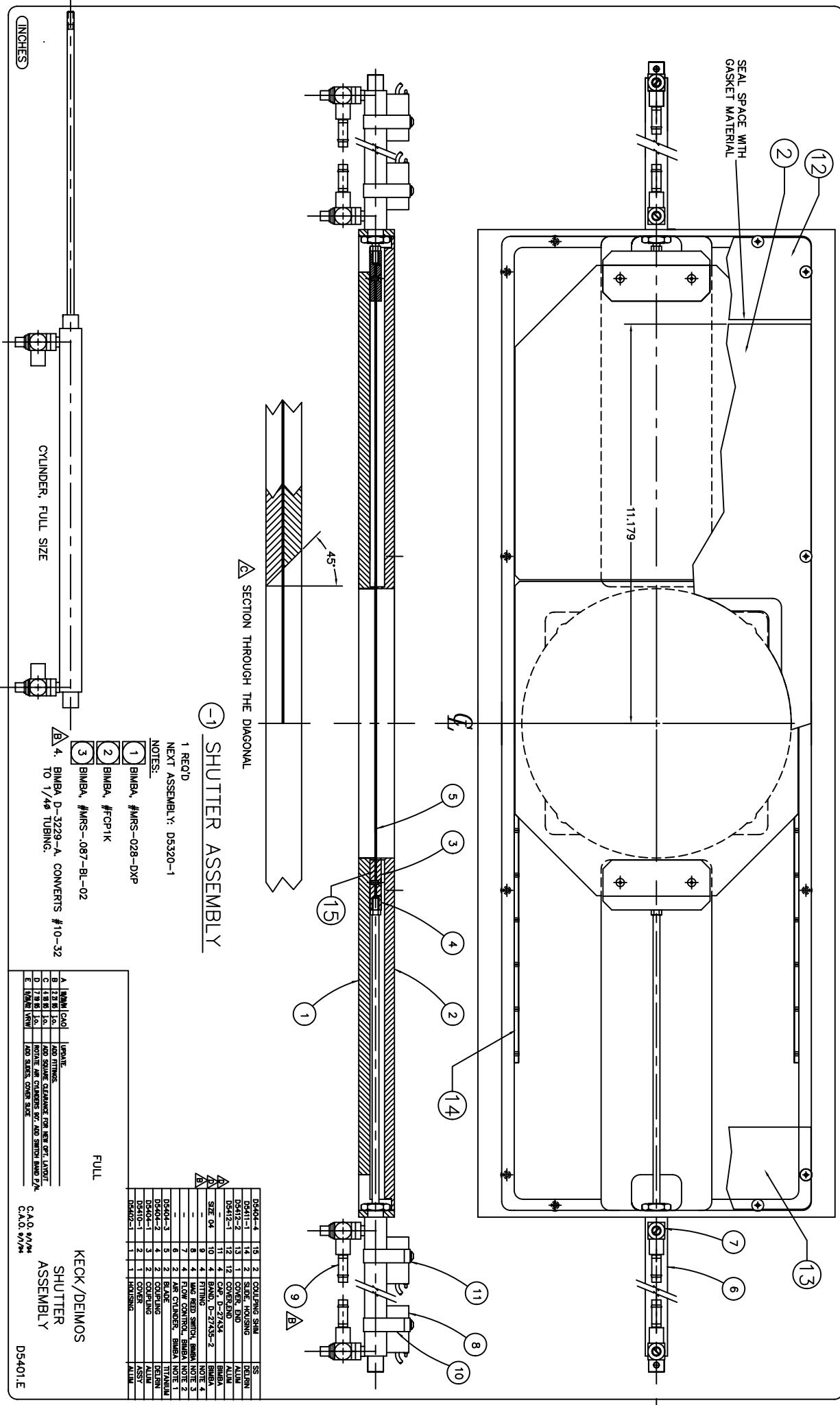


INCHES



-1 SHUTTER ASSEMBLY

1 REQ'D
NEXT ASSEMBLY: DS320-1
NOTES:

- 1 BIMBA, #MRS-02B-DXP
- 2 BIMBA, #FCP1K
- 3 BIMBA, #MRS-087-BL-02
- 4 BIMBA D-3229-A CONVERTS #10-32 TO 1/4" TUBING.

REV	DATE	DESCRIPTION	BY	CHKD
00404-1	10	SCREWING SHIM	SS	SS
00404-2	13	COVER END	ALUM	ALUM
00404-3	12	COVER END	ALUM	ALUM
00404-4	11	COVER END	ALUM	ALUM
00404-5	10	COVER END	ALUM	ALUM
00404-6	10	COVER END	ALUM	ALUM
00404-7	10	COVER END	ALUM	ALUM
00404-8	10	COVER END	ALUM	ALUM
00404-9	10	COVER END	ALUM	ALUM
00404-10	10	COVER END	ALUM	ALUM
00404-11	10	COVER END	ALUM	ALUM
00404-12	10	COVER END	ALUM	ALUM
00404-13	10	COVER END	ALUM	ALUM
00404-14	10	COVER END	ALUM	ALUM
00404-15	10	COVER END	ALUM	ALUM
00404-16	10	COVER END	ALUM	ALUM
00404-17	10	COVER END	ALUM	ALUM
00404-18	10	COVER END	ALUM	ALUM
00404-19	10	COVER END	ALUM	ALUM
00404-20	10	COVER END	ALUM	ALUM
00404-21	10	COVER END	ALUM	ALUM
00404-22	10	COVER END	ALUM	ALUM
00404-23	10	COVER END	ALUM	ALUM
00404-24	10	COVER END	ALUM	ALUM
00404-25	10	COVER END	ALUM	ALUM
00404-26	10	COVER END	ALUM	ALUM
00404-27	10	COVER END	ALUM	ALUM
00404-28	10	COVER END	ALUM	ALUM
00404-29	10	COVER END	ALUM	ALUM
00404-30	10	COVER END	ALUM	ALUM
00404-31	10	COVER END	ALUM	ALUM
00404-32	10	COVER END	ALUM	ALUM
00404-33	10	COVER END	ALUM	ALUM
00404-34	10	COVER END	ALUM	ALUM
00404-35	10	COVER END	ALUM	ALUM
00404-36	10	COVER END	ALUM	ALUM
00404-37	10	COVER END	ALUM	ALUM
00404-38	10	COVER END	ALUM	ALUM
00404-39	10	COVER END	ALUM	ALUM
00404-40	10	COVER END	ALUM	ALUM
00404-41	10	COVER END	ALUM	ALUM
00404-42	10	COVER END	ALUM	ALUM
00404-43	10	COVER END	ALUM	ALUM
00404-44	10	COVER END	ALUM	ALUM
00404-45	10	COVER END	ALUM	ALUM
00404-46	10	COVER END	ALUM	ALUM
00404-47	10	COVER END	ALUM	ALUM
00404-48	10	COVER END	ALUM	ALUM
00404-49	10	COVER END	ALUM	ALUM
00404-50	10	COVER END	ALUM	ALUM

REV	DATE	DESCRIPTION	BY	CHKD
A	10/01/04	INITIAL CAD		
B	12/28/04	ADD FITTINGS		
C	1/19/05	ADD SQUARE GLASSWARE FOR NEW OPT. LAYOUT		
D	1/19/05	MODIFY AIR CHAMBERS PER. ADD SWITCH DIMS 1/4"		
E	1/19/05	ADD SWITCH DIMS 1/4"		

FULL
KECK/DEIMOS
SHUTTER
ASSEMBLY
DS401.E