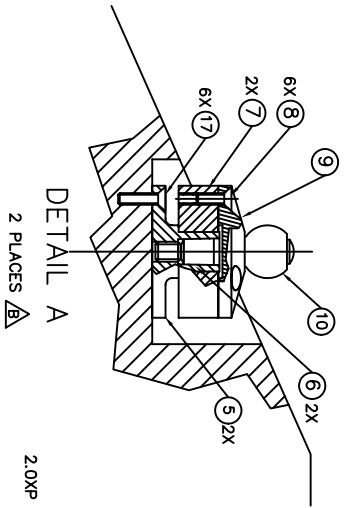
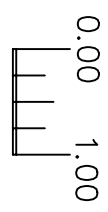


**1 DUMMY TENT MIRROR ASSEMBLY**

- 1 REQ'D  
 NOTES:  
 1. NEXT ASSY: D3605-1  
 2. SIMILAR TO REAL TENT MIRROR, D3101-1



A	1/17	1.0	HAVE CHANGE WAS D3107
B	1/18	1.0	BOTH SIDE SUPPORTS NOW THE SAME

N.A.

KECK/DEIMOS  
 DUMMY TENT MIRROR  
 ASSEMBLY  
 EJU 4/4/97  
 4/4/97  
 D3607.B

17	8	1/4-10 F.H. CAP SCREW	S.S.
18	10	1/4-10 F.H. CAP SCREW	S.S.
19	2	TOOLING BALL	ASSY
20	2	CAP	STEEL
21	8	8-32 F.H. CAP SCREW	S.S.
22	2	FLEX BEARING	ALUM
23	2	FLEX BEARING	ALUM
24	2	WASHER	STEEL
25	2	WASHER	STEEL
26	2	10-32 F.H. CAP SCW	S.S.
27	1	PLATE	STEEL
28	1	PLATE	STEEL
29	1	DUMMY TENT MIRROR	ALUM