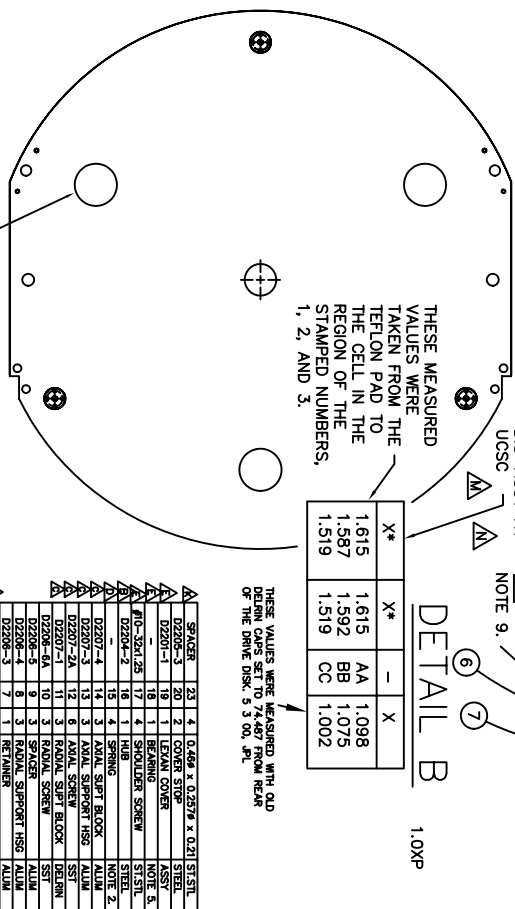
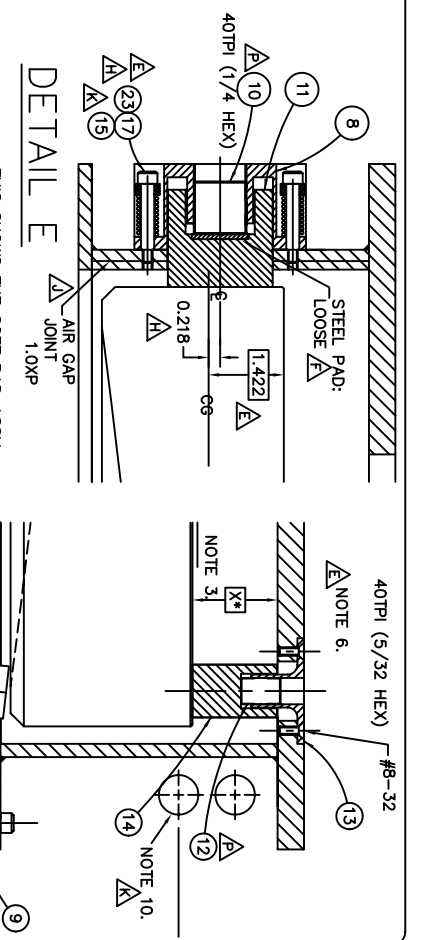
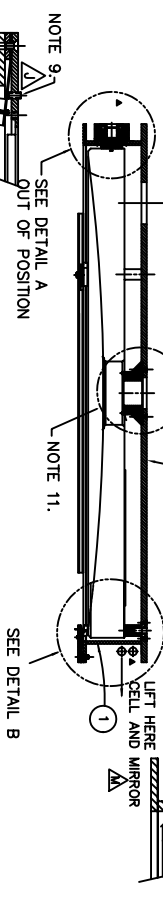
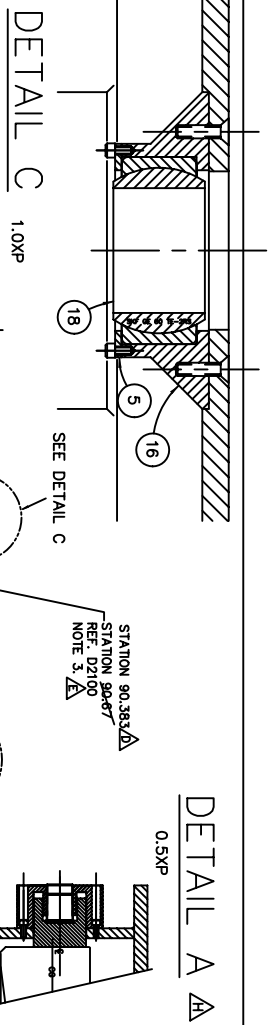
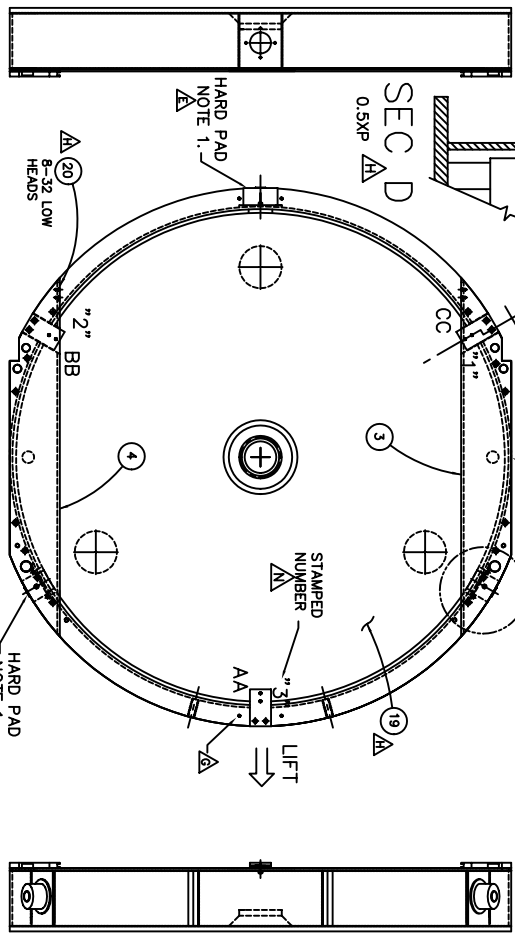


0.20XP
INCHES

- 1 RECD
NOTES:
1. THIS SUPPORT SYSTEM HAS TWO HARD PADS AND ONE SOFT PAD.
2. LEE COIL SPRING #LC-063G-7 FOR A TOTAL FORCE OF 100 LBS.
3. ERROR DISCOVERED: 0.29 INCH
4. CLEARANCE FOR MIRROR INSTALLATION TOOL, D2208-1
5. SKF GE 60 TE-2RS SPHERICAL BUSHING
6. TOOL D2213-1 IS USED FOR THESE.
7. NEXT ASSY: D2100-1
8. CELL WEIGHT: 405 LBS
9. #1/4-20 SET SCREW ADDED TO GET 30 LBS ON BACK SUPPORT PAD, 3 PLACES
10. LIFT HOLE, ADDITIONAL HOLES ADDED LATER.
11. ALIGNMENT TOOLING: D2350

COLLIMATOR MIRROR CELL ASSEMBLY



THESE MEASURED VALUES WERE TAKEN FROM THE TEFLON PAD TO THE REGION OF THE CELL IN THE STAMPED NUMBERS, 1, 2, AND 3.

Y*	X*	X
1.615	1.615	1.098
1.587	1.592	1.075
1.519	1.519	1.002
	AA	
	BB	
	CC	

THESE VALUES WERE MEASURED WITH OLD DEBRIN CARP SET TO 74.487 FROM REAR OF THE DRIVE DISK, S 3 00, 9°.

Q	37.00	1.0	HOOD NOTE 2, AND BUSH ATTACHMENTS	A	24MM COLD	REV. NUMBER CONTROL & SUPPORTS
H	5.420	1.0	DOC AND WED AT ASST	B	8.228	UPRTE, AND HUB
J	5.120	1.0	DOC AND WED AT ASST	C	1.120	RE-CONSTR DRAWING NUMBERS AND NOTE 1.
K	1.120	1.0	DOC AND WED AT ASST / LEAVE HOLE	D	1.120	HEAT & BESS DRAWING
L	1.120	1.0	DOC AND WED AT ASST / LEAVE HOLE	E	1.120	HEAT & BESS DRAWING
M	1.120	1.0	DOC AND WED AT ASST / LEAVE HOLE	F	1.120	REVISED MIRROR SHAPE, VERIFY POSITION.
P	1.120	1.0	DOC AND WED AT ASST / LEAVE HOLE			

3RD ANGLE PROJECTION

N.A.

KECK /DEIMOS
COLLIMATOR
MIRROR CELL ASSEMBLY
E.I. 7/7/96
C.A.O. 7/7/96
D2202.P